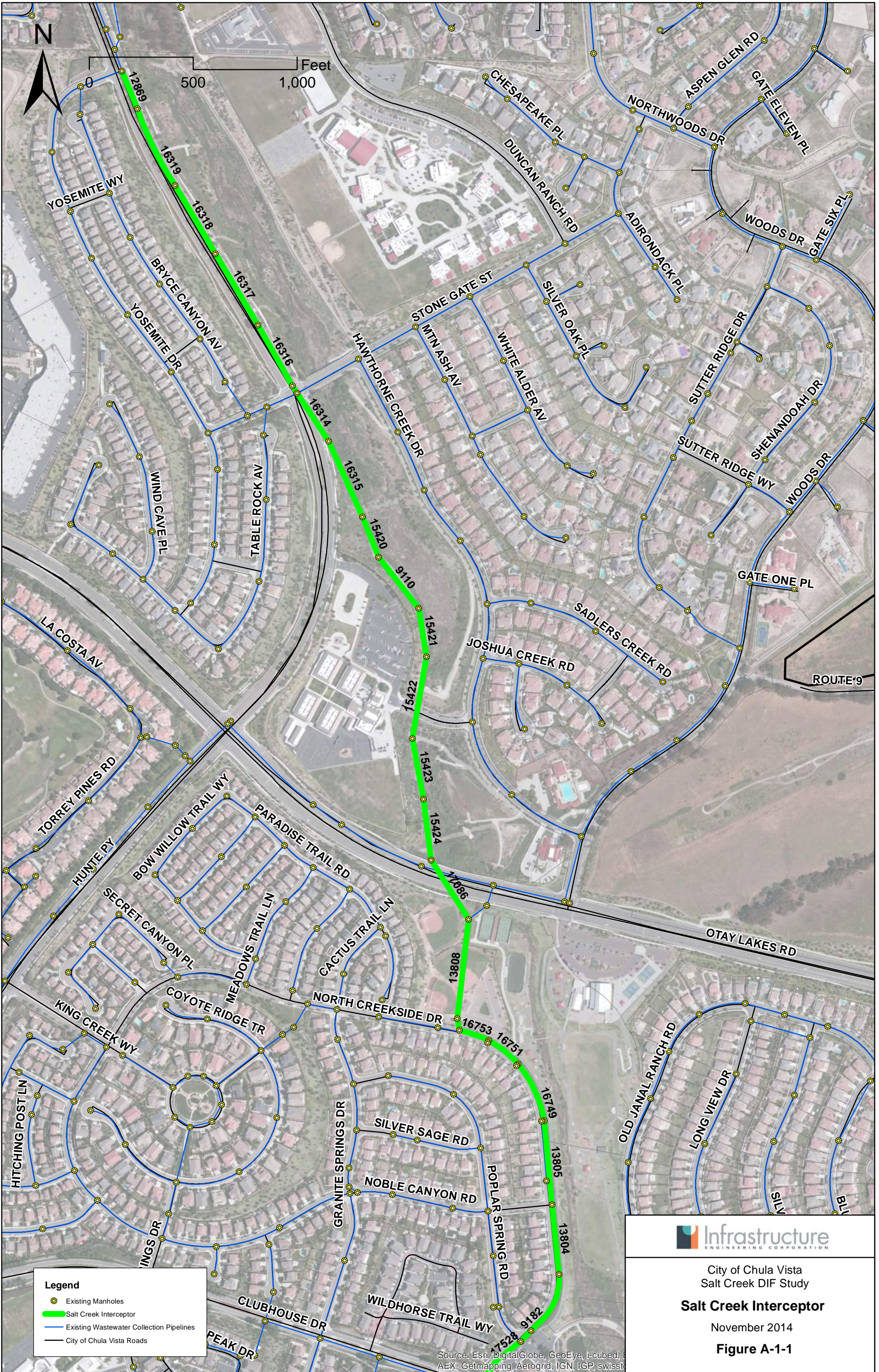


## **APPENDIX C: Salt Creek Interceptor (detail)**



**Legend**

- Existing Manholes
- Salt Creek Interceptor
- Existing Wastewater Collection Pipelines
- City of Chula Vista Roads



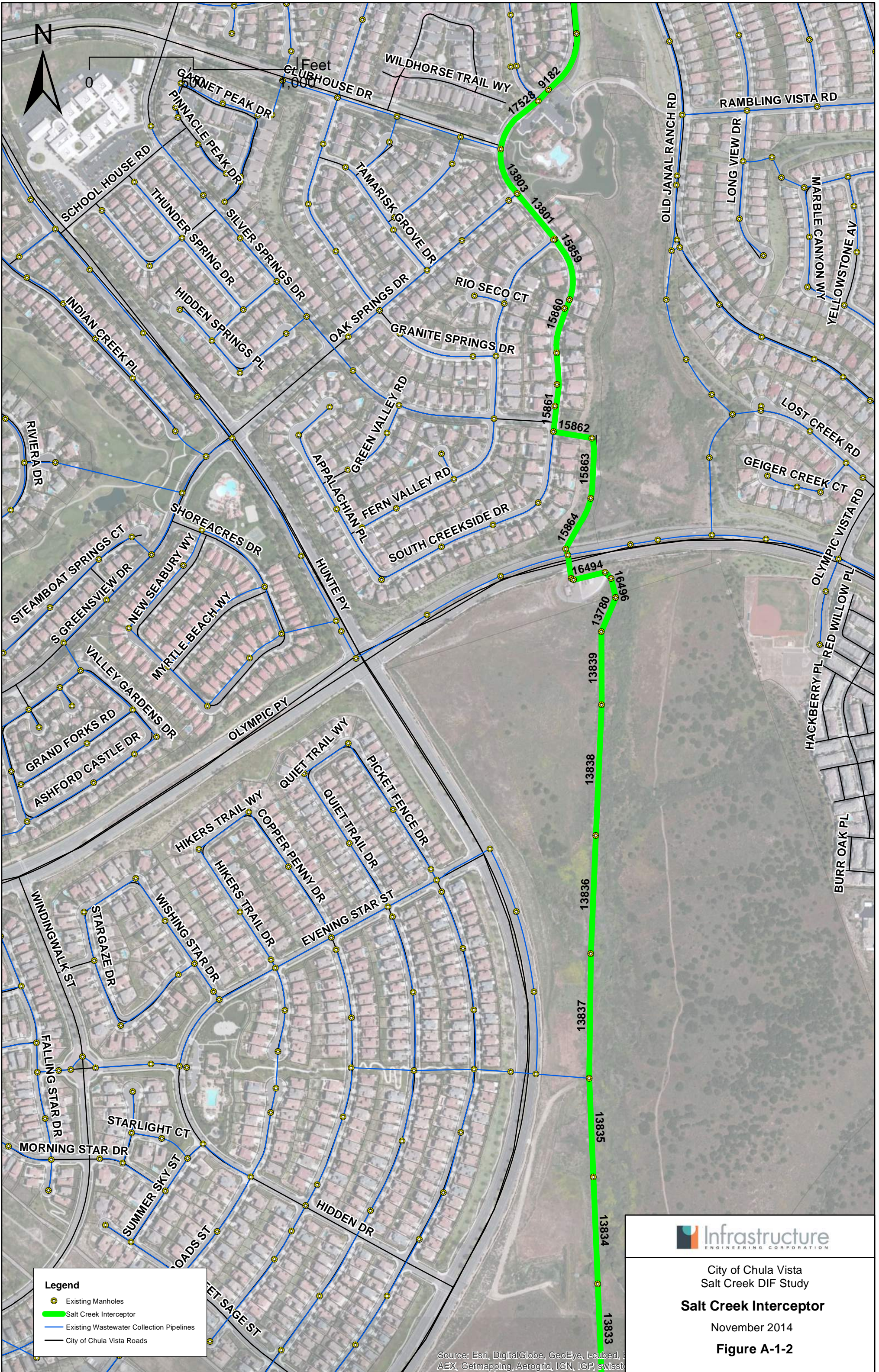
City of Chula Vista  
Salt Creek DIF Study

**Salt Creek Interceptor**

November 2014

**Figure A-1-1**

Source: Esri, DigitalGlobe, GeoEye, i-cubed, AEX, Getmapping, Aerogrid, IGN, IGP, swisstopo



**Legend**

- Existing Manholes
- Salt Creek Interceptor
- Existing Wastewater Collection Pipelines
- City of Chula Vista Roads



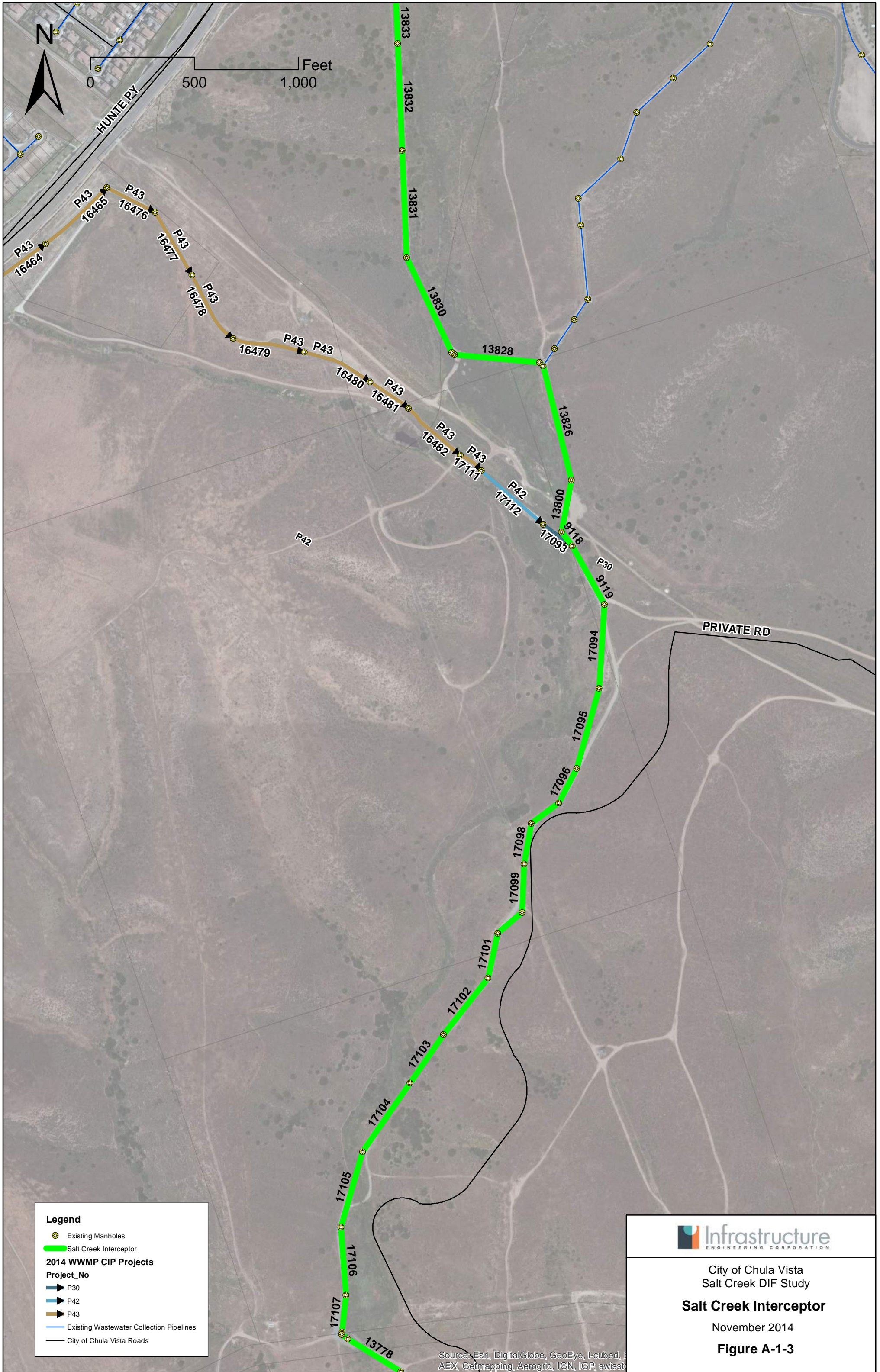
City of Chula Vista  
Salt Creek DIF Study

**Salt Creek Interceptor**

November 2014

**Figure A-1-2**

Source: Esri, DigitalGlobe, GeoEye, i-cubed, AEX, Getmapping, Aerogrid, IGN, IGP, swisstopo



**Legend**

- Existing Manholes
- Salt Creek Interceptor
- 2014 WWMP CIP Projects**
- Project\_No**
- P30
- P42
- P43
- Existing Wastewater Collection Pipelines
- City of Chula Vista Roads



City of Chula Vista  
 Salt Creek DIF Study  
**Salt Creek Interceptor**  
 November 2014  
**Figure A-1-3**

Source: Esri, DigitalGlobe, GeoEye, i-cubed, AEX, Getmapping, Aerogrid, IGN, IGP, swisstopo



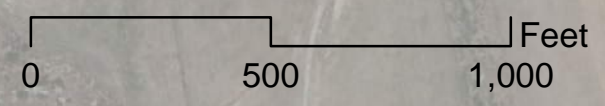
**Legend**

- Existing Manholes
- Salt Creek Interceptor
- Existing Wastewater Collection Pipelines
- City of Chula Vista Roads

City of Chula Vista  
Salt Creek DIF Study  
**Salt Creek Interceptor**  
November 2014  
**Figure A-1-4**

Source: Esri, DigitalGlobe, GeoEye, i-cubed, Earthstar Geographics, CNES/Airbus DS, USDA, USGS, AEX User Community





**Legend**

- Existing Manholes
- Salt Creek Interceptor
- Existing Wastewater Collection Pipelines
- City of Chula Vista Roads

  
City of Chula Vista  
Salt Creek DIF Study  
**Salt Creek Interceptor**  
November 2014  
**Figure A-1-5**

Source: Esri, DigitalGlobe, GeoEye, i-cubed, Earthstar Geographics, CNES/Airbus DS, USDA, USGS, AEX User Community



0 500 1,000 Feet

PRIVATE RD

WILEY RD

PRIVATE RD



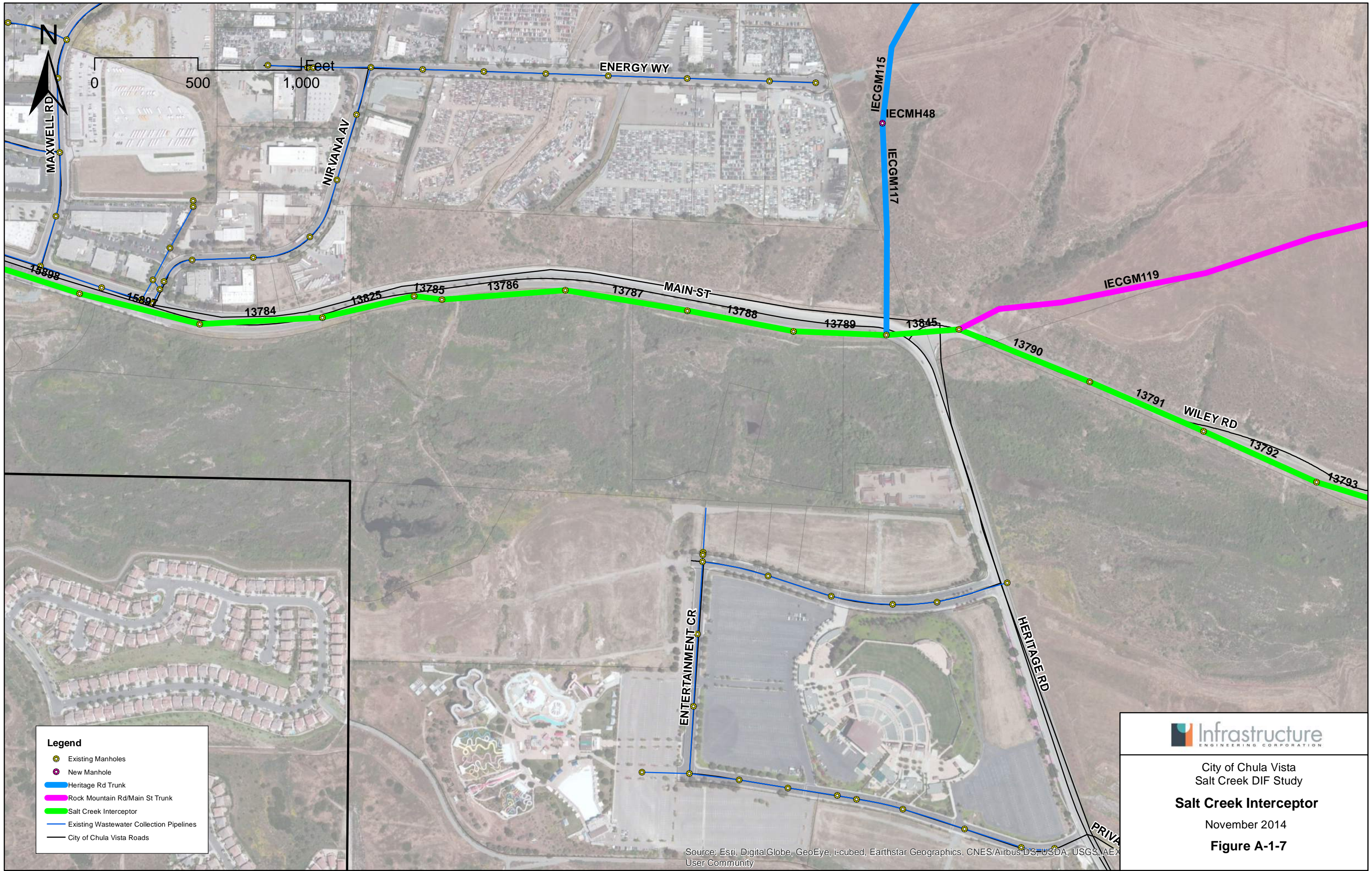
**Legend**

- Existing Manholes
- Salt Creek Interceptor
- Existing Wastewater Collection Pipelines
- City of Chula Vista Roads



City of Chula Vista  
Salt Creek DIF Study  
**Salt Creek Interceptor**  
November 2014  
**Figure A-1-6**

Source: Esri, DigitalGlobe, GeoEye, i-cubed, Earthstar Geographics, CNES/Airbus DS, USDA, USGS, AEX User Community



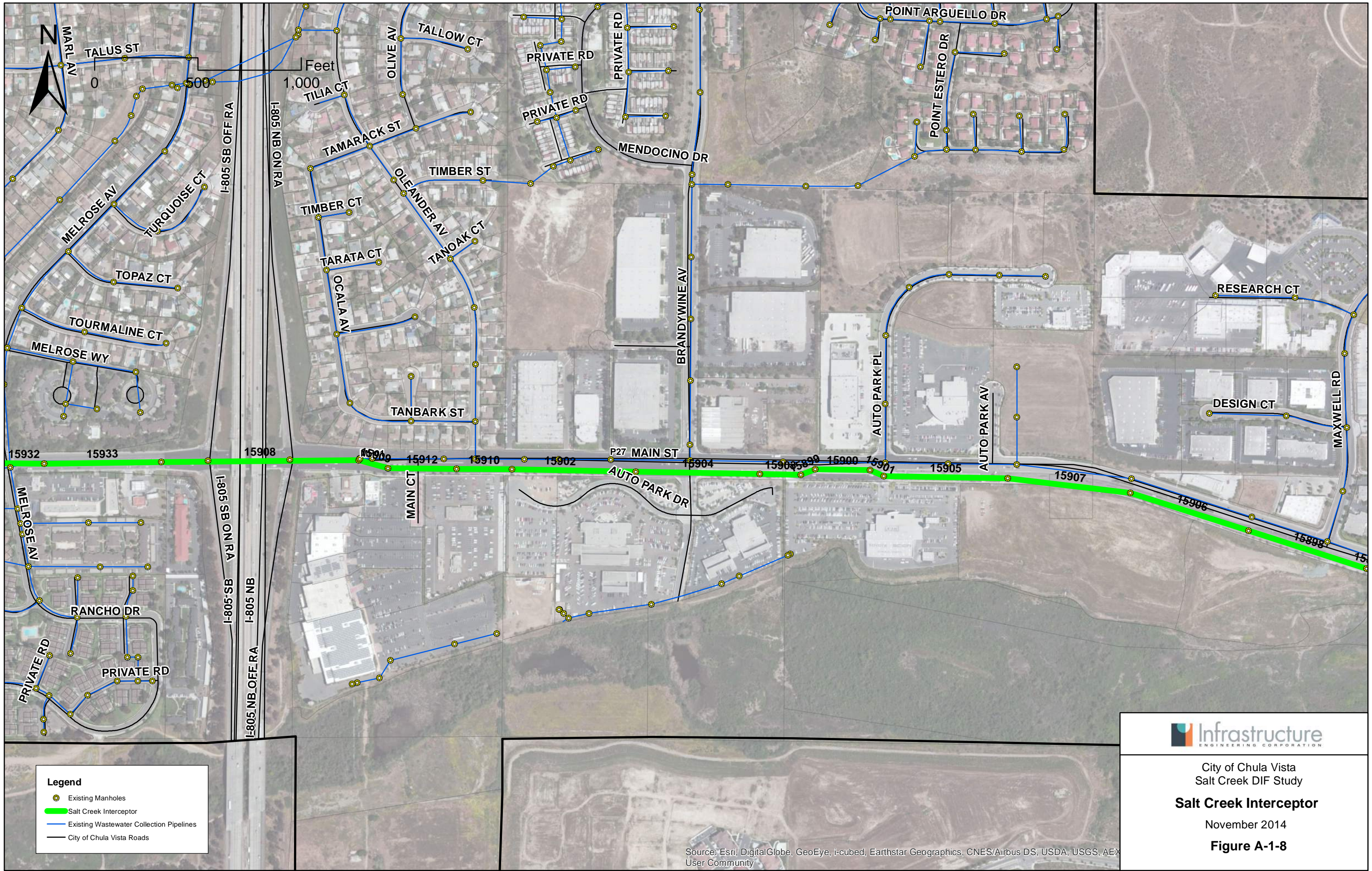
**Legend**

- Existing Manholes
- New Manhole
- Heritage Rd Trunk
- Rock Mountain Rd/Main St Trunk
- Salt Creek Interceptor
- Existing Wastewater Collection Pipelines
- City of Chula Vista Roads

  
 City of Chula Vista  
 Salt Creek DIF Study  
**Salt Creek Interceptor**  
 November 2014  
**Figure A-1-7**

Source: Esri, DigitalGlobe, GeoEye, i-cubed, Earthstar Geographics, CNES/Airbus DS, USDA, USGS, AEX User Community





**Legend**

- Existing Manholes
- Salt Creek Interceptor
- Existing Wastewater Collection Pipelines
- City of Chula Vista Roads







City of Chula Vista  
 Salt Creek DIF Study  
**Salt Creek Interceptor**  
 November 2014  
**Figure A-1-8**

Source: Esri, DigitalGlobe, GeoEye, i-cubed, Earthstar Geographics, CNES/Airbus DS, USDA, USGS, AEX User Community



**Legend**

-  Existing Manholes
-  Salt Creek Interceptor
-  Existing Wastewater Collection Pipelines
-  City of Chula Vista Roads



City of Chula Vista  
Salt Creek DIF Study

**Salt Creek Interceptor**

November 2014





**Figure A-1-9**

Source: Esri, DigitalGlobe, GeoEye, i-cubed, Earthstar Geographics, CNES/Airbus DS, USDA, USGS, AEX, User Community



Feet  
255 510

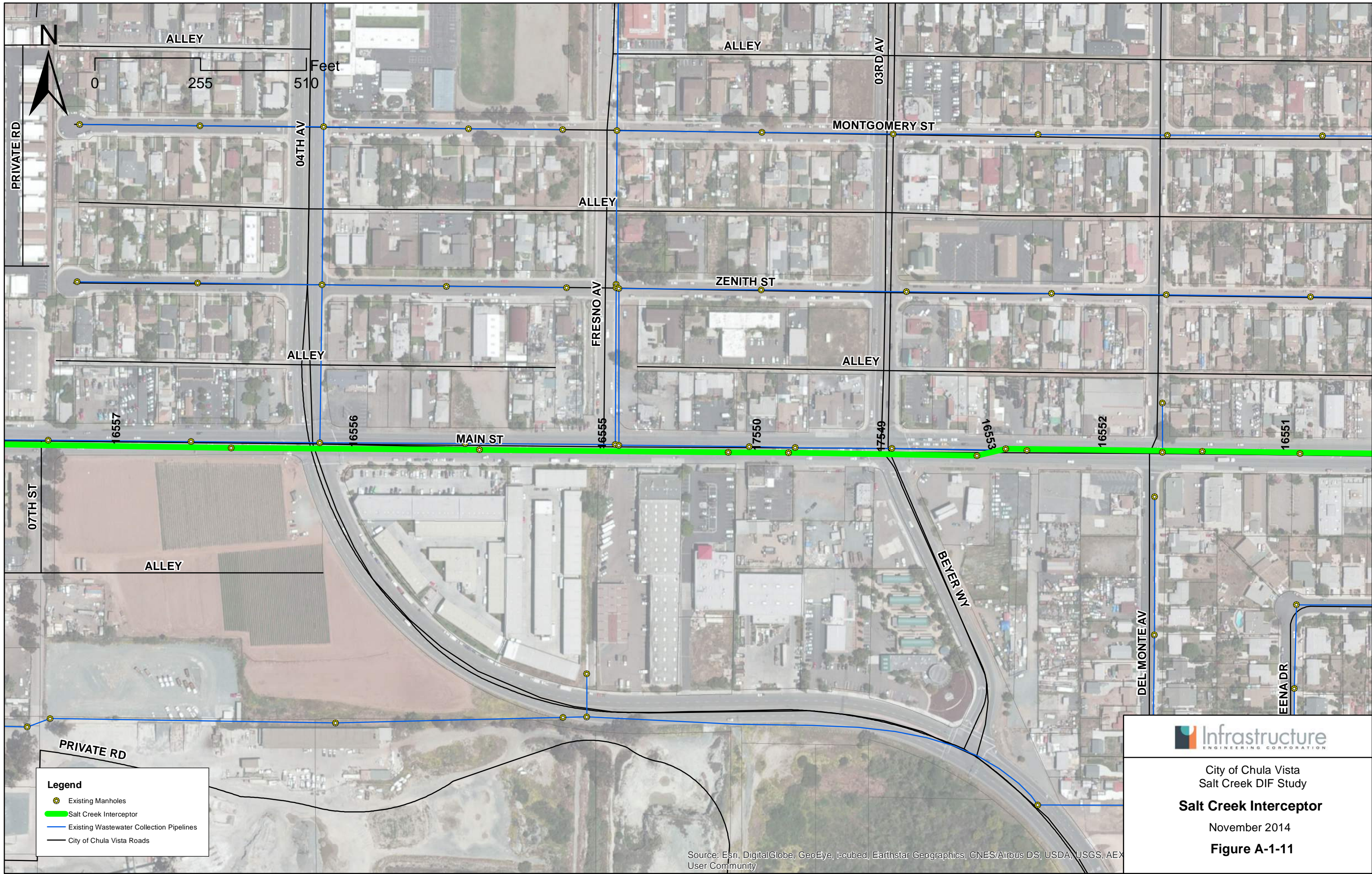
**Legend**

-  Existing Manholes
-  Salt Creek Interceptor
-  Existing Wastewater Collection Pipelines
-  City of Chula Vista Roads







City of Chula Vista  
Salt Creek DIF Study  
**Salt Creek Interceptor**  
November 2014  
**Figure A-1-10**

Source: Esri, DigitalGlobe, GeoEye, i-cubed, Earthstar Geographics, CNES/Airbus DS, USDA, USGS, AEX User Community



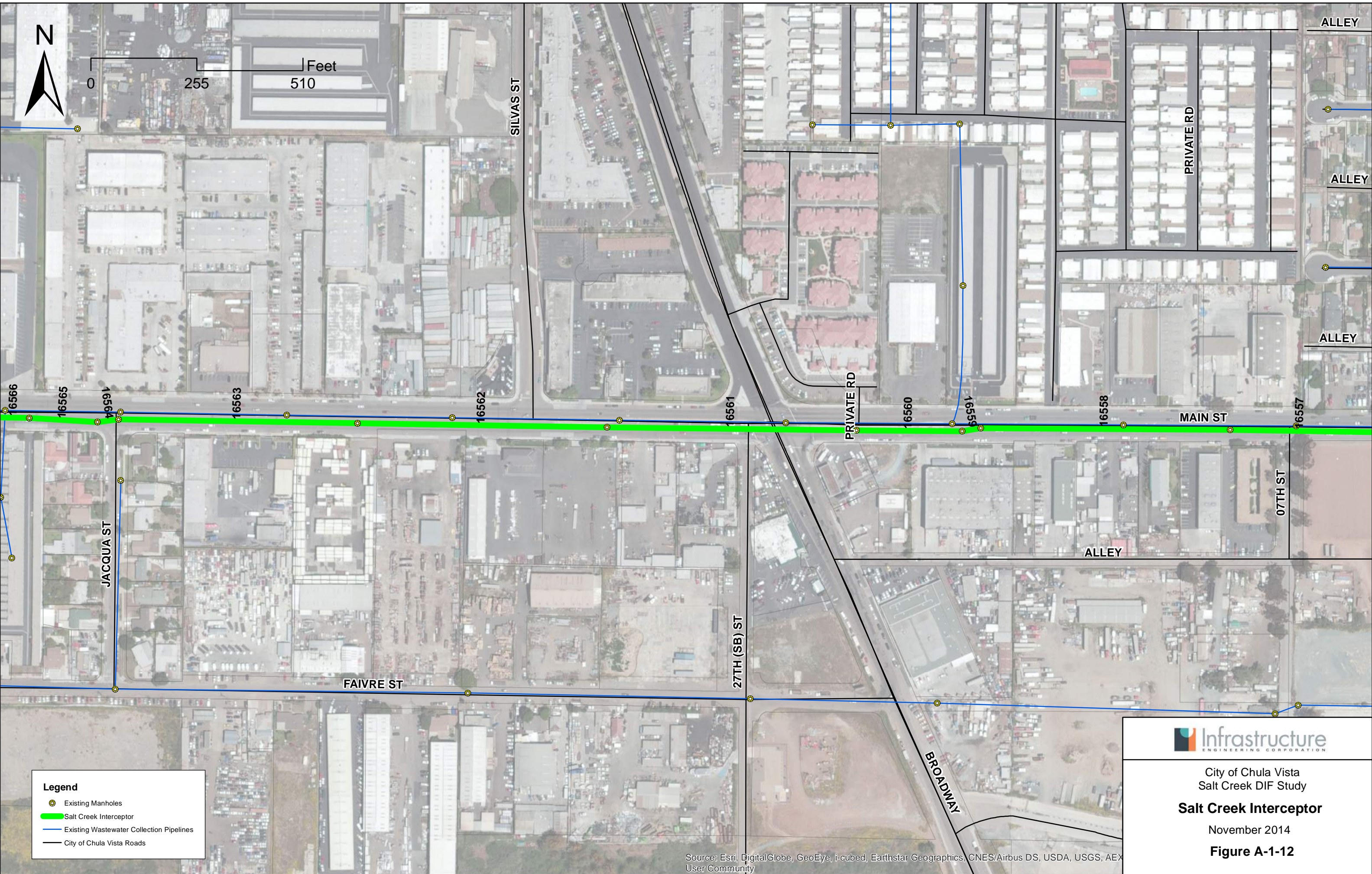
**Legend**

-  Existing Manholes
-  Salt Creek Interceptor
-  Existing Wastewater Collection Pipelines
-  City of Chula Vista Roads







City of Chula Vista  
 Salt Creek DIF Study  
**Salt Creek Interceptor**  
 November 2014  
**Figure A-1-11**

Source: Esri, DigitalGlobe, GeoEye, i-cubed, Earthstar Geographics, CNES/Airbus DS, USDA, USGS, AEX User Community



**Legend**

-  Existing Manholes
-  Salt Creek Interceptor
-  Existing Wastewater Collection Pipelines
-  City of Chula Vista Roads



City of Chula Vista  
 Salt Creek DIF Study  
**Salt Creek Interceptor**  
 November 2014  
**Figure A-1-12**

Source: Esri, DigitalGlobe, GeoEye, i-cubed, Earthstar Geographics, CNES/Airbus DS, USDA, USGS, AEX User Community



0 25 510 Feet



**Legend**

- Existing Manholes
- Salt Creek Interceptor
- Existing Wastewater Collection Pipelines
- City of Chula Vista Roads



City of Chula Vista  
Salt Creek DIF Study  
**Salt Creek Interceptor**  
November 2014  
**Figure A-1-13**

Source: Esri, DigitalGlobe, GeoEye, i-cubed, Earthstar Geographics, CNES/Airbus DS, USDA, USGS, AEX User Community