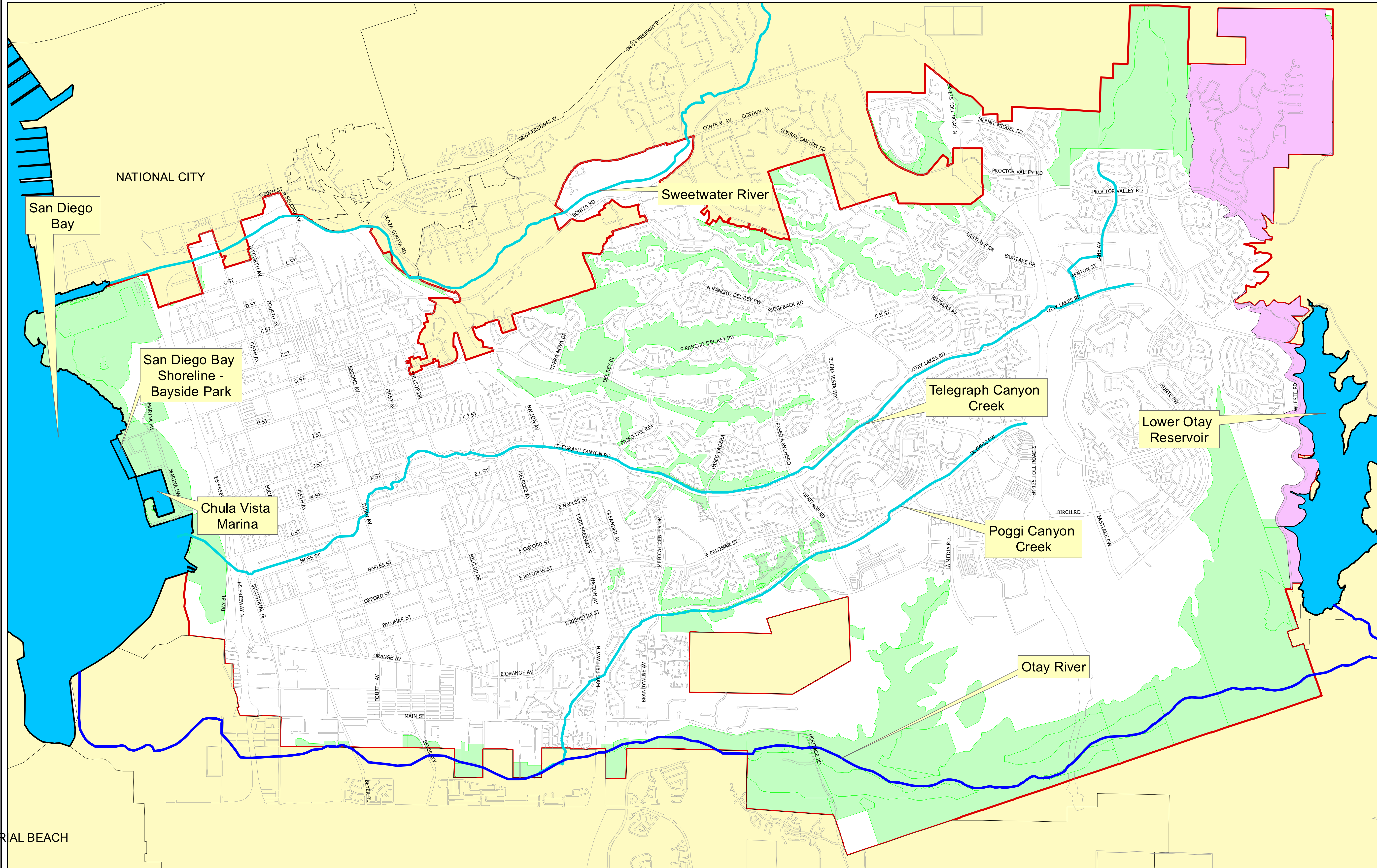
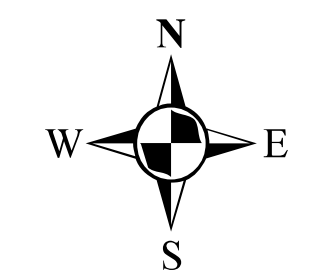


CITY OF CHULA VISTA SENSITIVE AREAS



- Sensitive Areas Include:**
- Multiple Species Conservation Program preserve areas
 - Clean Water Act Section 303(d) impaired water bodies
 - Areas naturally draining to source water reservoirs
 - ~ Rare, threatened, or endangered species (RARE) areas

Disclaimer: This map has been prepared in compliance with the National Pollutant Discharge Elimination System (NPDES) Municipal Permit requirements. It may be used to determine high priority development and redevelopment projects.



1 inch = 2,186 feet

Date Saved: 7/24/2013

PERIAL BEACH