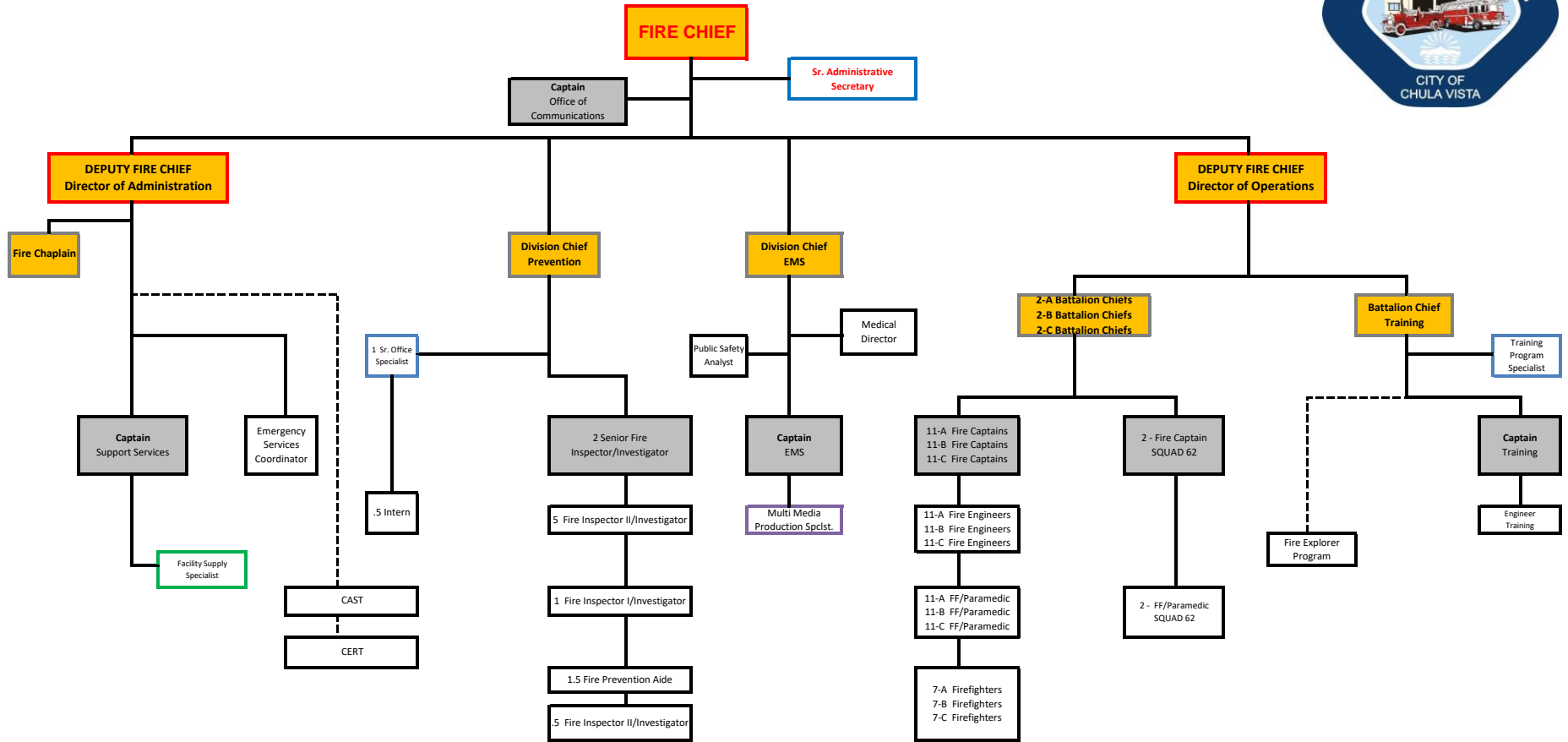


CHULA VISTA FIRE DEPARTMENT ORGANIZATION CHART 2019



	Sworn Staff	Daily Suppression
Fire Chief	1	
Deputy Fire Chief	2	
Division Chief	2	
Battalion Chief - Suppression	6	2
Battalion Chief - Administrative	1	
Fire Captain - Suppression	35	12
Fire Captain - Administrative	4	
Fire Engineer - Suppression	33	11
Fire Engineer - Administrative	1	
Firefighter/Paramedic	35	12
Firefighter/EMT	21	7
Sr. Inspector/Investigator	2	
Inspector/Investigator II	5	
Inspector/Investigator I	1	
Total	149	44

Civilian Staff	
Sr. Administrative Secretary	1
Emergency Services Coordinator	1
Public Safety Analyst	1
Training Program Specialist	1
Sr. Office Specialist	1
Facility Supply Specialist	1
Multi Media Production Specialist	1
Fire Prevention Aide	1.5
Fire Inspector II/Investigator 1	0.5
Intern	0.5
Medical Director	1
Total Civilian	10.5
Volunteer Staff	
Fire Chaplain	1
CAST	49
CERT	35
Fire Explorers	20
Total Volunteer	105

Fire Department Total Staff	159.5
Daily Suppression Staff	44
Daily Fire Prevention Staff	12.5
Daily Training Division Staff	4
Daily Clerical Support Staff	3
Daily Logistical Support Staff	1
Total Non-Suppression Staff per Weekday	28.5
Total Staff Per Weekday Including Suppression	72.5
Volunteer Total Staff	105
Fire Department Total Staff w/Volunteers	264.5
2019 Per Capita (130/270)	0.481

IAFF Members	144
Association of Chula Vista Employees (ACE)	7
Unrepresented Professional and Mid Managers	3
Senior Managers	2
Executives	1

Fire Department Executive Staff Members

Fire Department Senior Staff Members