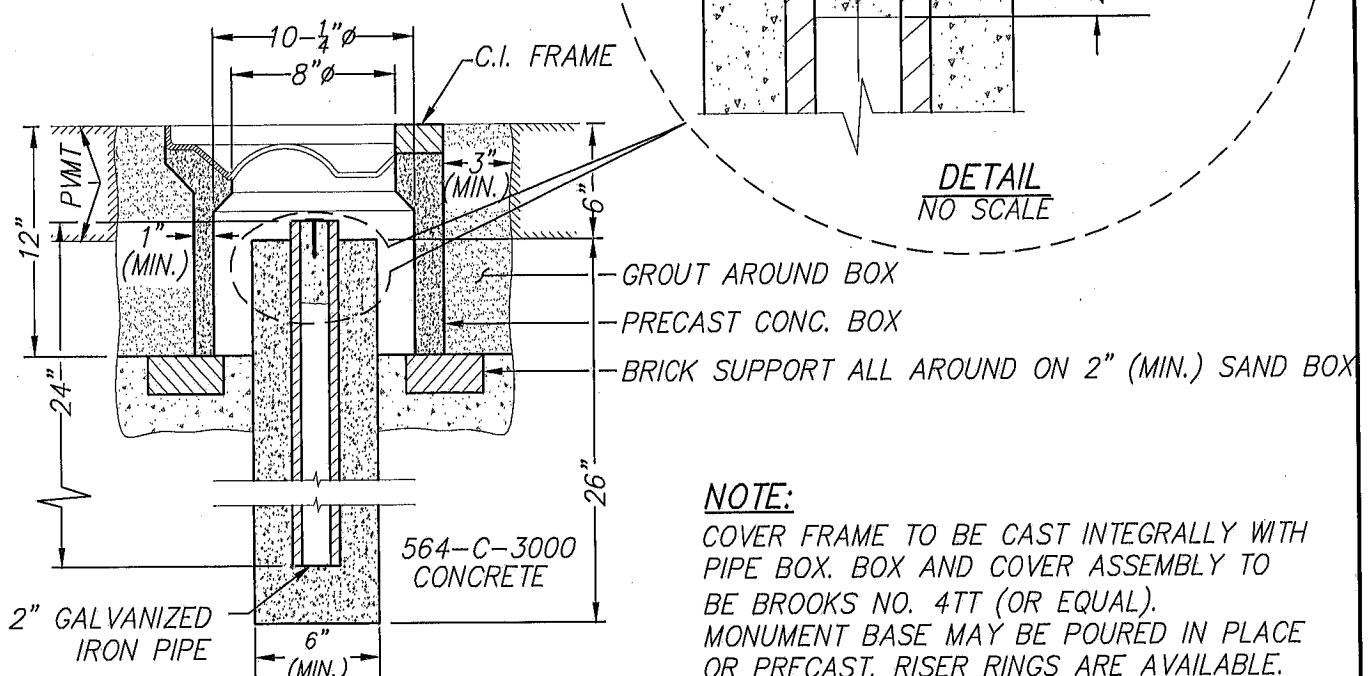
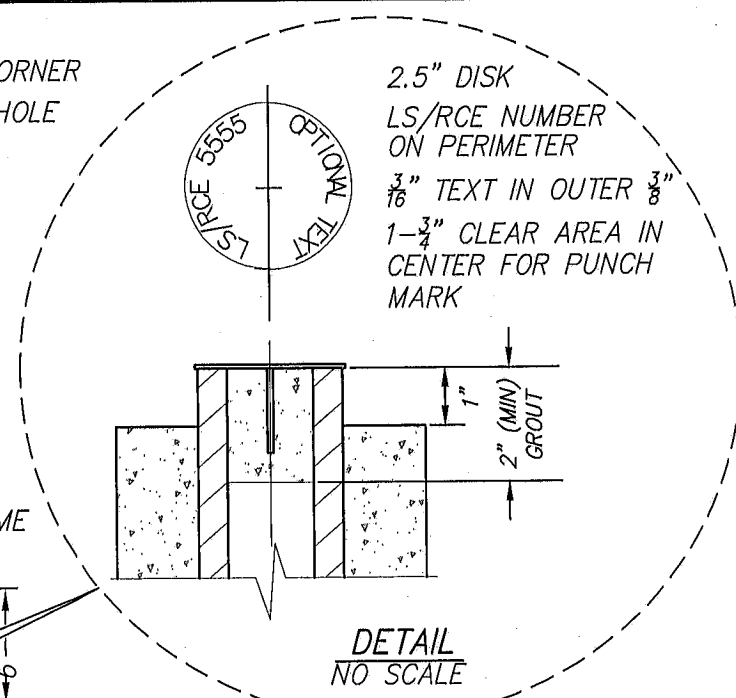
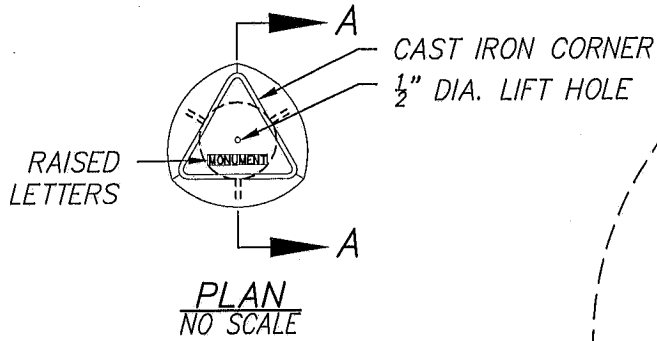


MISCELLANEOUS

(MSC)

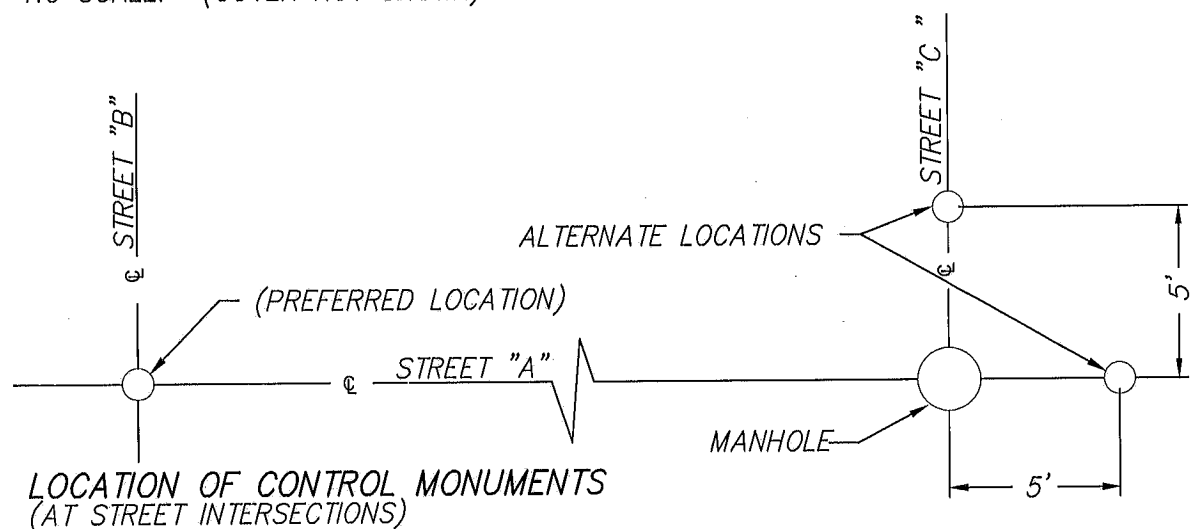


**DESIGN AND
CONSTRUCTION
STANDARD DRAWINGS
2017**



NOTE:
 COVER FRAME TO BE CAST INTEGRALLY WITH PIPE BOX. BOX AND COVER ASSEMBLY TO BE BROOKS NO. 4TT (OR EQUAL). MONUMENT BASE MAY BE POURED IN PLACE OR PRECAST. RISER RINGS ARE AVAILABLE.

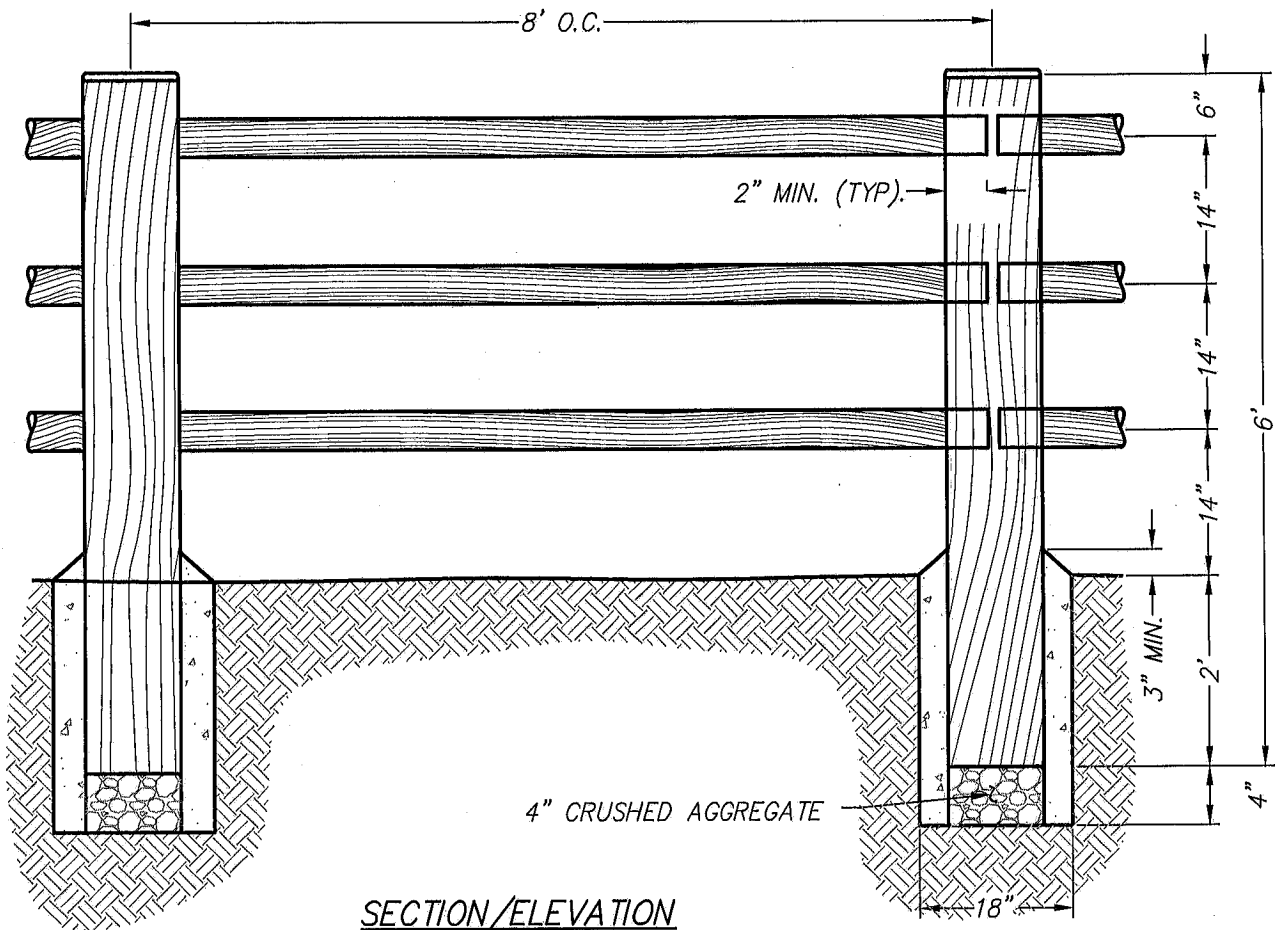
SECTION VIEW "A-A"
 NO SCALE: (COVER NOT SHOWN)



| REVISION | BY | APPROVED | DATE |
|----------|-----|------------|-------|
| ORIGINAL | | | 7/75 |
| REVISION | CVM | C. SWANSON | 11/02 |
| REVISION | DPH | W. VALLE | 11/17 |
| | | | |
| | | | |

CITY OF CHULA VISTA
 ENGINEERING & CAPITAL PROJECTS
 STANDARD DRAWING
 SURVEY MONUMENT (LOCATED IN STREET)

William S. Valle
 WILLIAM S. VALLE 11/21/2017
 CITY ENGINEER
 MSC-01



SECTION/ELEVATION
NO SCALE

NOTES:

1. POST SHALL BE 6" MIN. DIA. LODGE POLE.
2. RAILS SHALL BE 3-1/2" MIN. DIA. LODGE POLE.
3. ALL RAILS TO BE SECURED TO POST WITH 20d HOT DIPPED GALV. NAILS. 4. ALL LUMBER TO BE CCA PRESSURE TREATED.
5. SUBGRADE AT FOOTINGS TO BE 90%(MINIMUM) COMPACTION.
6. CONCRETE FOOTINGS SHALL BE 470-C-2000 "CLASS B" CONCRETE.

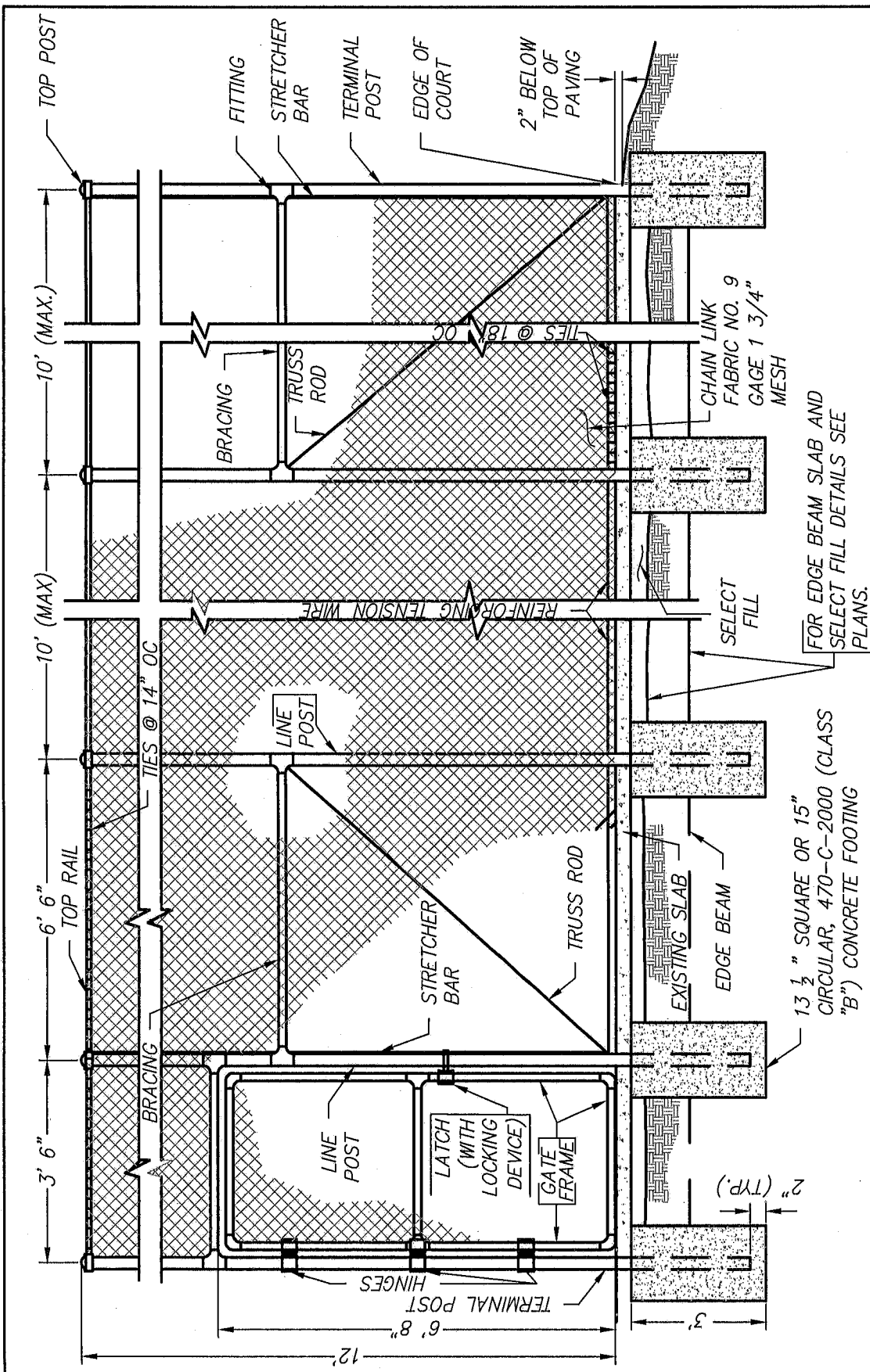
| REVISION | BY | APPROVED | DATE |
|----------|-----|------------|-------|
| ORIGINAL | | | 12/75 |
| REVISION | CVM | C. SWANSON | 11/02 |
| REVISION | DPH | W. VALLE | 11/17 |
| | | | |
| | | | |

CITY OF CHULA VISTA
ENGINEERING & CAPITAL PROJECTS
STANDARD DRAWING

William S. Valle
WILLIAM S. VALLE 11/21/2017
CITY ENGINEER

POST & RAIL FENCE

MSC-02



ELEVATION
NO SCALE

GENERAL NOTES:

1. MATERIAL AND CONSTRUCTION SHALL CONFORM WITH THE PROVISIONS OF SECTION 206-6.
2. CHAIN LINK FABRIC SHALL BE ERECTED ON THE INTERIOR SIDE OF COURTS.
3. GREEN MESH WIND SCREEN FABRIC FOR ENTIRE COURT TO BE PROVIDED. OF THE STD. SPECIFICATIONS, FOR PUBLIC WORKS CONSTRUCTION.

FOR EDGE BEAM SLAB AND
SELECT FILL DETAILS SEE
PLANS.

13 1/2" SQUARE OR 15"
CIRCULAR, 470-C-2000 (CLASS
"B") CONCRETE FOOTING

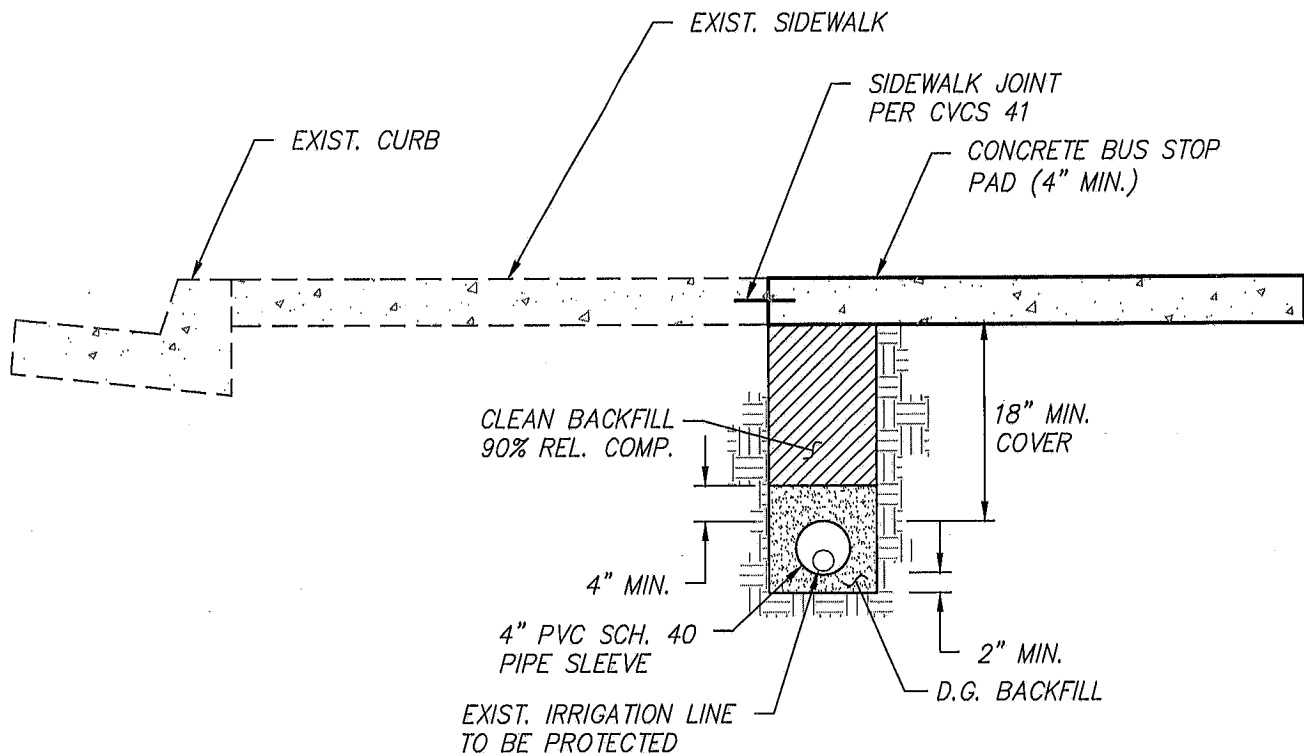
| REVISION | BY | APPROVED | DATE |
|----------|-----|------------|-------|
| ORIGINAL | | | 11/67 |
| | | C. SWANSON | 11/02 |
| REVISION | DPH | W. VALLE | 11/17 |

CITY OF CHULA VISTA
ENGINEERING & CAPITAL PROJECTS
STANDARD DRAWING

CHAIN LINK TENNIS COURT FENCE

William S. Valle
WILLIAM S. VALLE 11/21/2017
CITY ENGINEER

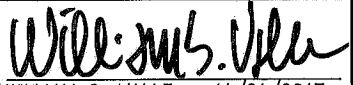
MSC-03

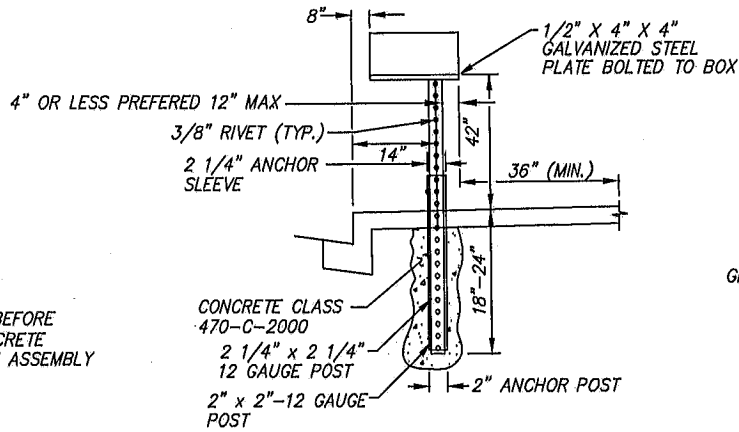


NO SCALE
(TYPICAL)

CONSTRUCTION NOTES:

1. ALL SLEEVES TO RUN A MIN. OF 12" BEYOND HARDSCAPE EDGES.
2. LOCATIONS OF ALL SLEEVES TO BE DETERMINED IN THE FIELD BY CITY INSPECTOR.
3. LOCATE ENDS (ALL) OF 4" SLEEVES WITH 3-INCH BY 3-INCH "X" SCRIBED ON SURFACE DIRECTLY ABOVE.
4. EPOXY DOWELS TO BE LOCATED 2-INCHES BELOW FINISHED SURFACE.
5. ALL SLEEVED AND RELOCATED IRRIGATION LINES / SPRAY HEADS SHALL BE IN ACCORDANCE WITH THE DIRECTION OF THE CITY INSPECTOR.

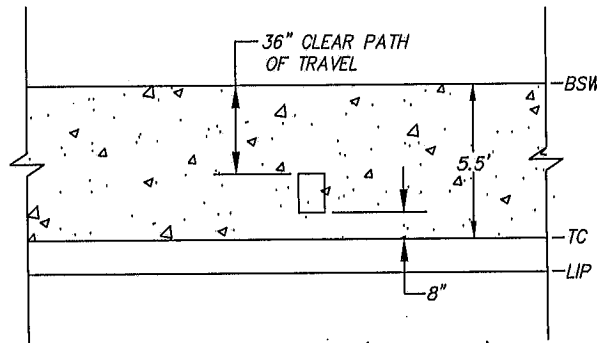
| REVISION | BY | APPROVED | DATE | CITY OF CHULA VISTA ENGINEERING & CAPITAL PROJECTS STANDARD DRAWING |  WILLIAM S. VALLE 11/21/2017 CITY ENGINEER |
|----------|-----|----------|-------|---|---|
| ORIGINAL | DPH | W. VALLE | 11/17 | | |
| | | | | BUS STOP & IRRIGATION PIPE SLEEVE | MSC-04 |
| | | | | | |



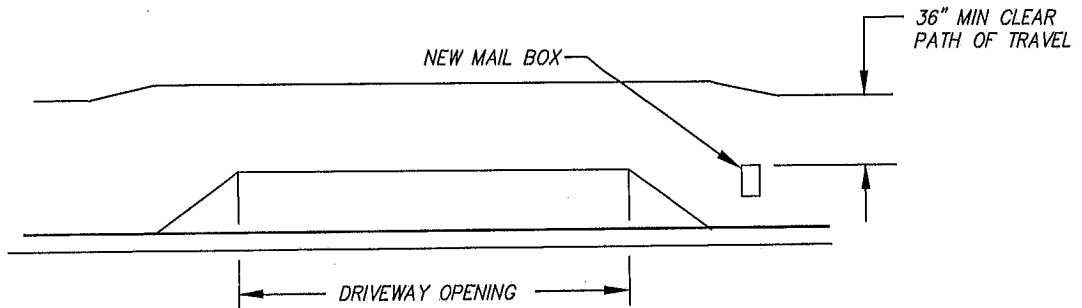
NOTE:
TAPE HOLES BEFORE
POURING CONCRETE
AROUND POST ASSEMBLY

GRIP RANGE: .200-.356
FINISH: ELECTRO-GALVANIZE
ASTM-B-633
TYPE III SCI

MAILBOX DETAIL (TELESPAR)
NO SCALE



MAILBOX DETAIL (TYPICAL)
NO SCALE



MAILBOX LOCATION WITH DRIVEWAY (TYPICAL)
NO SCALE

| REVISION | BY | APPROVED | DATE |
|----------|-----|----------|-------|
| ORIGINAL | DPH | W. VALLE | 11/17 |
| | | | |
| | | | |
| | | | |

CITY OF CHULA VISTA
ENGINEERING & CAPITAL PROJECTS
STANDARD DRAWING

MAILBOX INSTALLATION

William S. Valle
WILLIAM S. VALLE 11/21/2017
CITY ENGINEER

MSC-05