

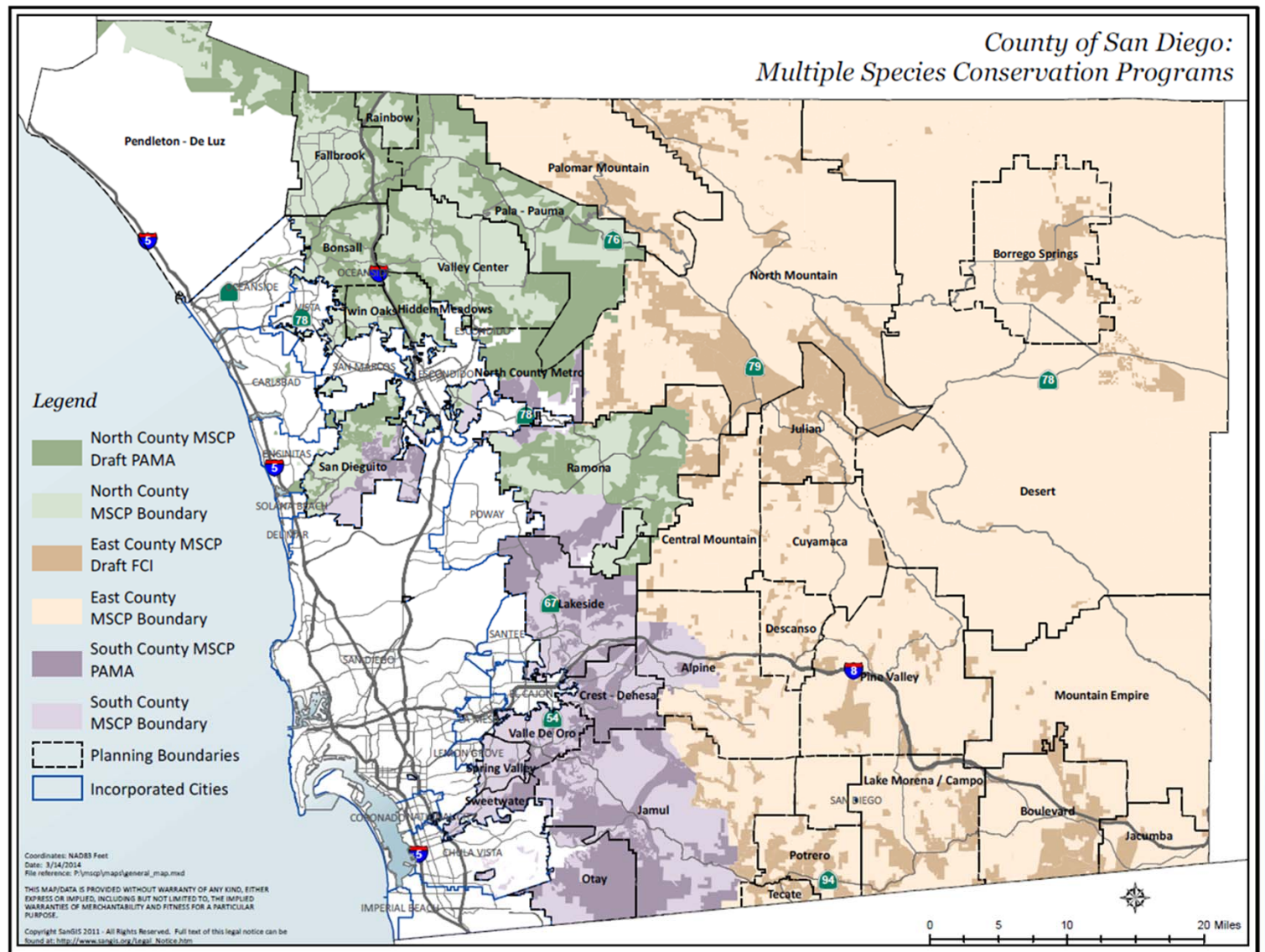
# Multiple Species Conservation Program South County Subarea Plan 2018 Annual Report

Bethany Principe  
County of San Diego  
Department of Parks and Recreation  
[Bethany.Principe@sdcounty.ca.gov](mailto:Bethany.Principe@sdcounty.ca.gov)



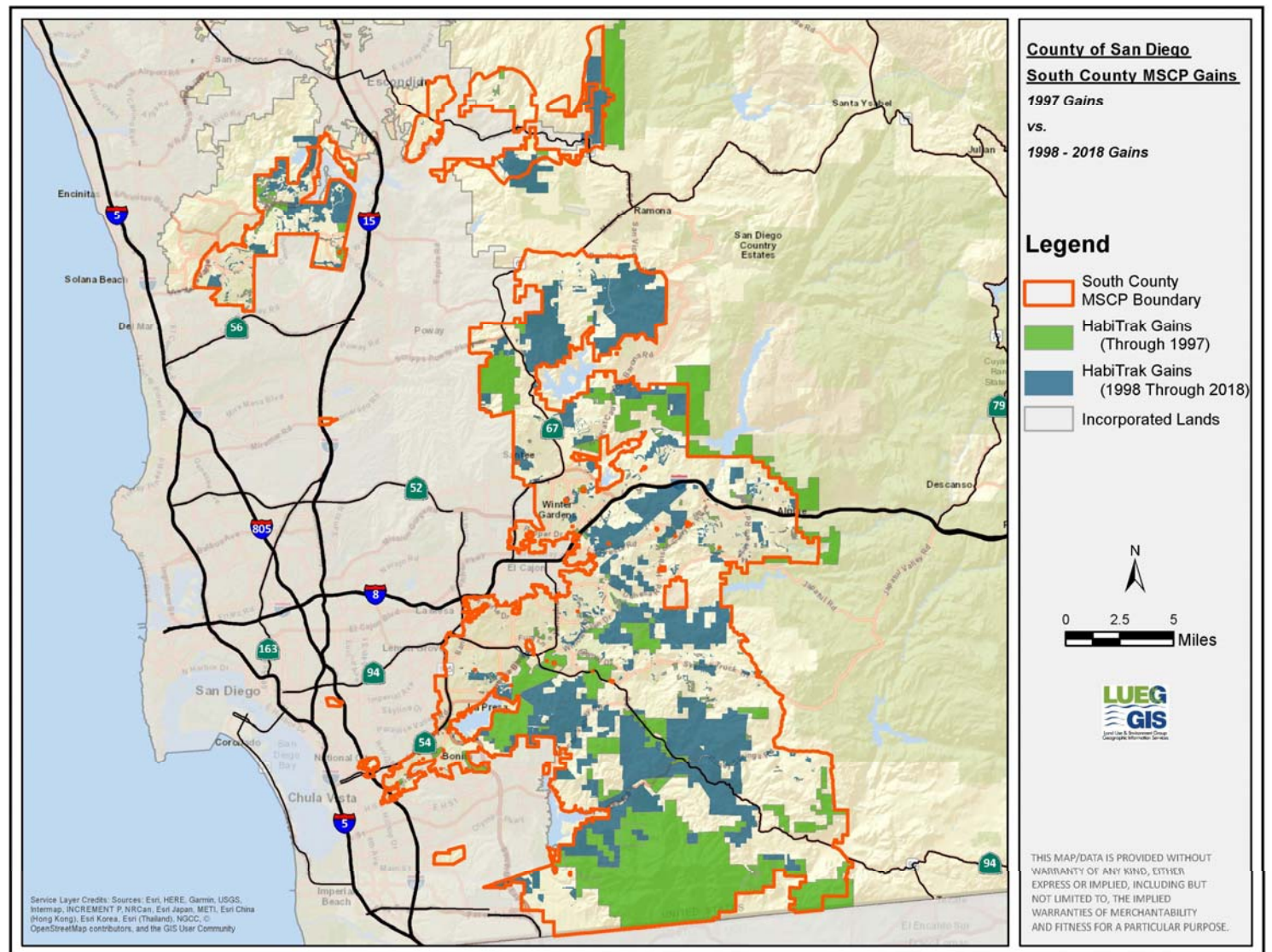
# MSCP Plan Areas

- ▶ South County Subarea Plan - adopted 1997
- ▶ Draft North County Plan
- ▶ Future East County Plan



# 21 Years of Preservation

- ▶ MSCP South County Subarea Plan
  - ▶ 85 covered species
- ▶ Preservation Goal: 98,379 acres
- ▶ MSCP Preserve assembled through 2018: 78,565 acres
- ▶ 80% MSCP Preserve assembled



# 2018 MSCP Subarea Plan Acquisitions

- ▶ MSCP Preserve increased by 705 acres
- ▶ The County acquired 349 acres
  - ▶ 19-acre Sycamore Canyon/Goodan Ranch Preserve addition
  - ▶ 75-acre Lakeside Linkage Preserve addition
  - ▶ 255-acre Peutz Valley Preserve
- ▶ 89 acres was gained through federal and state acquisitions
- ▶ 267 acres was gained through private land dedication

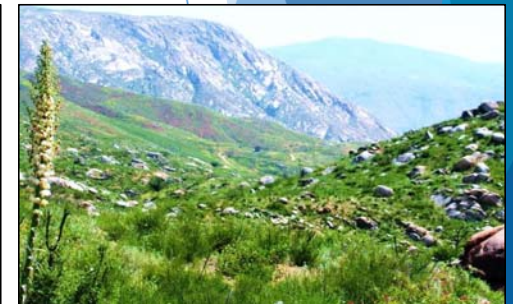
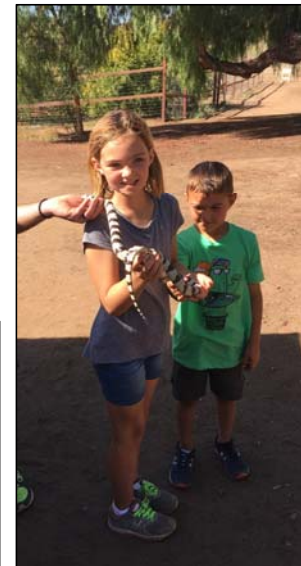


Peutz Valley Preserve



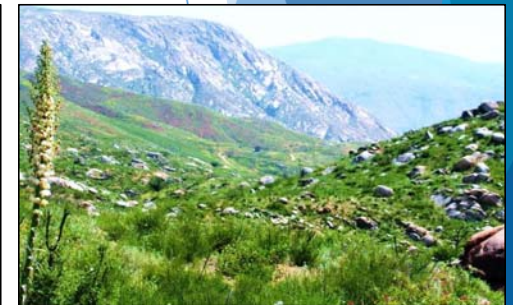
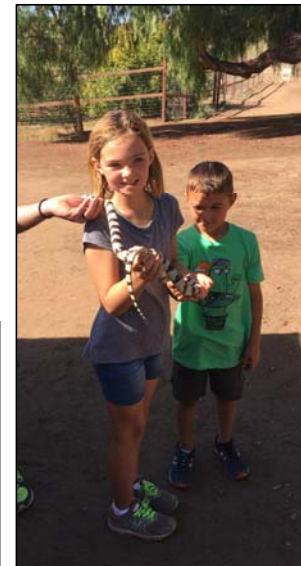
# Management and Monitoring

- ▶ Resource Management Plans
  - ▶ County owned and managed Subarea Plan preserves
- ▶ Habitat Management Activities
  - ▶ Land stewardship
  - ▶ Habitat management
  - ▶ Public outreach
    - ▶ Interpretative kiosks and signs
    - ▶ Ranger and docent led talks and hikes
    - ▶ Discovery Program



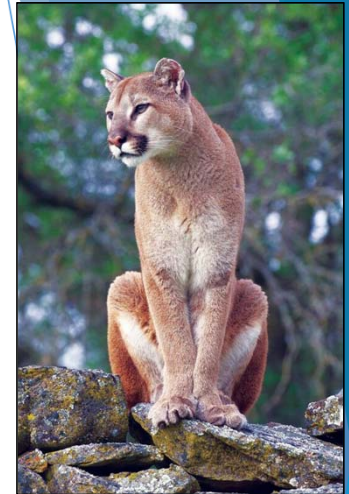
# Management and Monitoring

- ▶ Habitat Restoration and Enhancement
  - ▶ Grant funded
- ▶ Monitoring
  - ▶ Inventory surveys
    - ▶ Biodiversity
    - ▶ Cultural
    - ▶ Threats and Stressors
    - ▶ Management Directives



# Looking Forward

- ▶ South County MSCP Plan was one of the first in the Country
- ▶ The next 29 years for the South County MSCP Plan
- ▶ Integrate lessons learned into future MSCP plans



# Thank You

