

Welcome to South Bay Earth Day @Home!





Schedule of Sessions

- Turn your Yard into a Nature Scape
- Honeybee Production *Live Stream*
- Home Energy Efficiency Tips & Resources
- Intro to Backyard Composting *Live Stream*
- Ask the Recycler
- Food Waste 101 & City Update
- Living Zero Waste for one year!
- Upcycle Old Clothes into Latest Trends



Learn to NatureScape

South Bay Earth Day @ Home – April 22, 2021



Bob Coleman
Sustainability Specialist
rcoleman@chulavistaca.gov
619-476-5332



We all need a Nature Fix



Many people have a Nature Deficit Disorder

- 93% of our time is spent inside or in vehicles
- Greater “Joy” for people in natural settings than urban settings
- Confluence of demographics and technology has pivoted us further away from nature
- Avoiding nature causes people to underestimate its pleasurable benefits

Nature helps to alleviate things that ail us

- Provides feeling of tranquility
- Birdsong reduces stress
- Water sounds improve positive emotions

Why Create a NatureScape?

- **Create a plan - modify or redesign your yard:**
 - Extend your living space to the outdoors
 - Create a yard you will enjoy
 - Provide beneficial habitat for wildlife
 - Reduce or eliminate grass areas
 - Conserve water



NatureScapes – Natural Yard Care

5 Key Steps

It takes more planning, but you'll see significant savings in labor and water over time!

1. Build Healthy Living Soils
2. Plant Right for Your Site
3. WaterSmart Irrigation
4. Toxic-free Pest Control
5. Natural Lawn Care - Grasscycling



1. Build Healthy Living Soils

Compost, compost, compost

- Healthy soil provides air, water, nutrients
- Compost helps sandy soils hold nutrients, water
- Compost loosens clay soils
- Compost can be used as mulch too

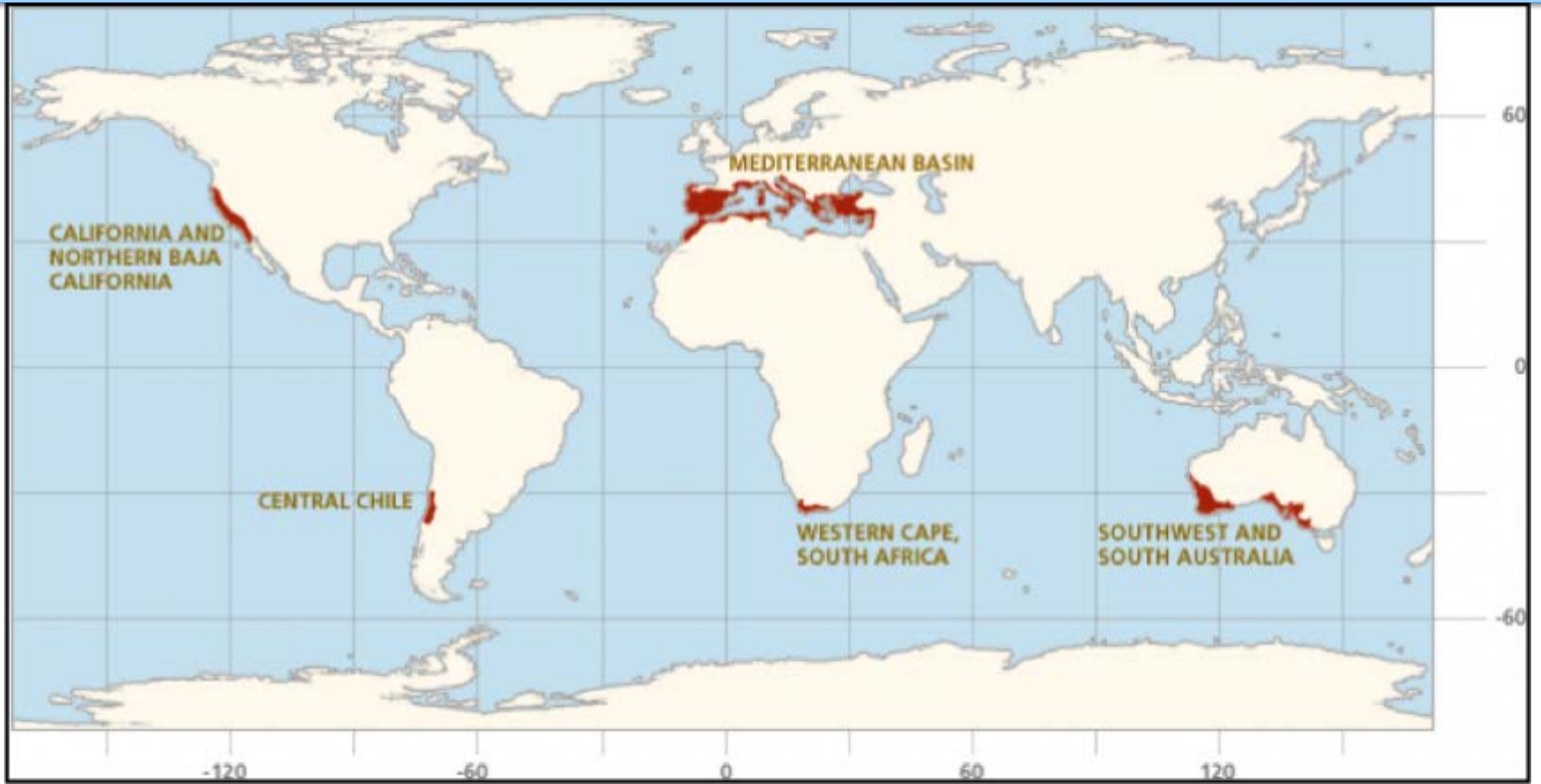


2. *Plant Right for Your Site*



- Get to know your yard – determine your microclimates
 - Sunny or shady areas
 - Dry or damp areas
- Group plants with similar needs – full sun, partial sun, shade only
- Select climate-appropriate, drought tolerant – native and/or California-friendly non-native plants (native to Western and Mediterranean climate zones)
- Refer to – Nifty 50 Plants Guide for WaterSmart Landscapes (San Diego County Water Authority); Sunset Western Garden Book (Zones 23 and 24)
- Find out full growth size of plants – plan accordingly
<http://www.ucanr.edu/sites/WUCOLS>

Mediterranean Climates



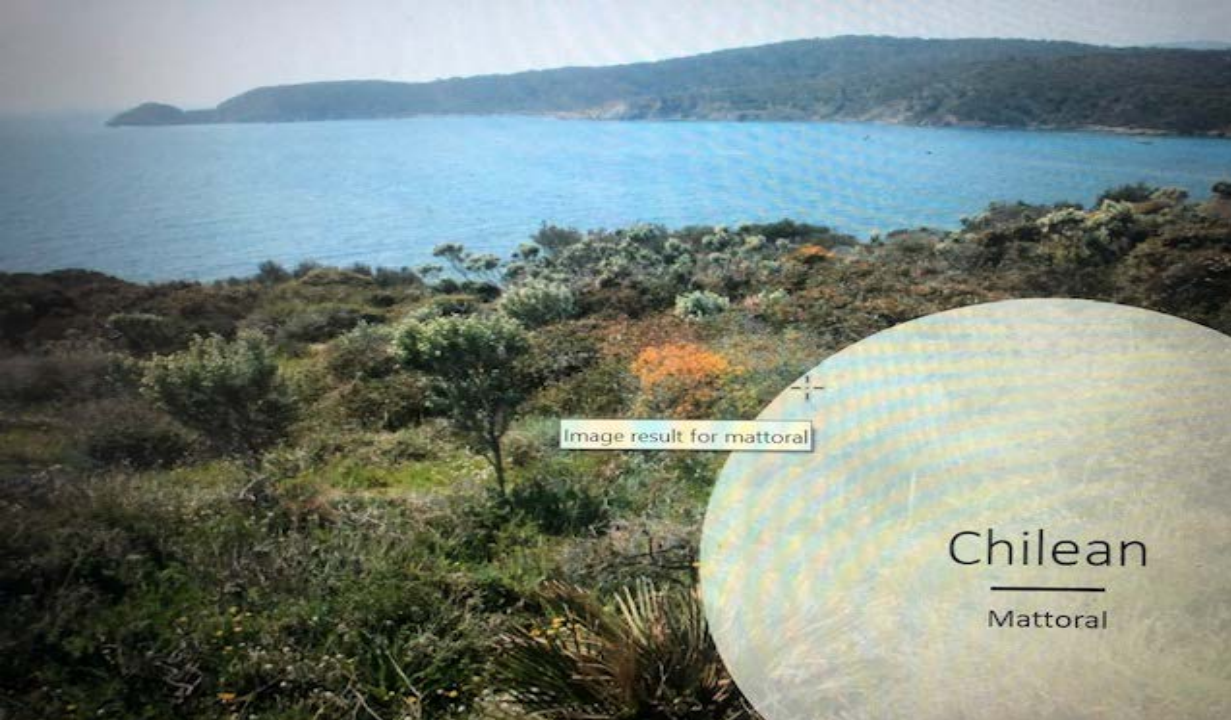
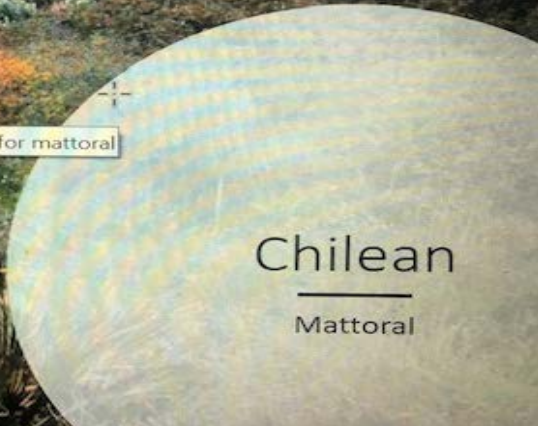


Image result for mattoral



3. *WaterSmart Irrigation*



Make every drop count

- Outdoor water use can comprise over 60% of total water home use
- Use efficient watering techniques

Avoid overwatering

- Don't apply water faster than soil can absorb it
- Irrigate long enough to wet entire root zone
- Water before sunrise or after sunset

Ideally

- Remove or reduce lawn areas
- Replace grass with groundcovers and plants to create a NatureScape

4. Toxic-free Pest Control

- **Start with prevention – build healthy soil**
- Organisms in soil protect plants from disease
- Avoid using chemical pesticides and herbicides
- Mulching controls weeds
- Select plants that attract beneficial “good” bugs
- Consider pest-repelling plants – dill, garlic, onion, fennel, sage, thyme, parsley, mint, nasturtium, marigolds.
- Make-your-own natural sprays to repel, kill unwanted pests



5. *Natural Lawn Care – Grasscycling*

- Lawns - water and maintenance needs often the highest
- Lawns - require proper nutrients and right amount of water
- *Grasscycling* – leave your nitrogen-rich clippings on the lawn, soil organisms recycle them into free fertilizer
- Aerate 1 to 2 times a year, increases water penetration
- Top lawns with **compost** not chemical fertilizers
- Pull weeds – avoid using chemical “weed and feed” products



NatureScapes in Chula Vista



Escape to the Backyard

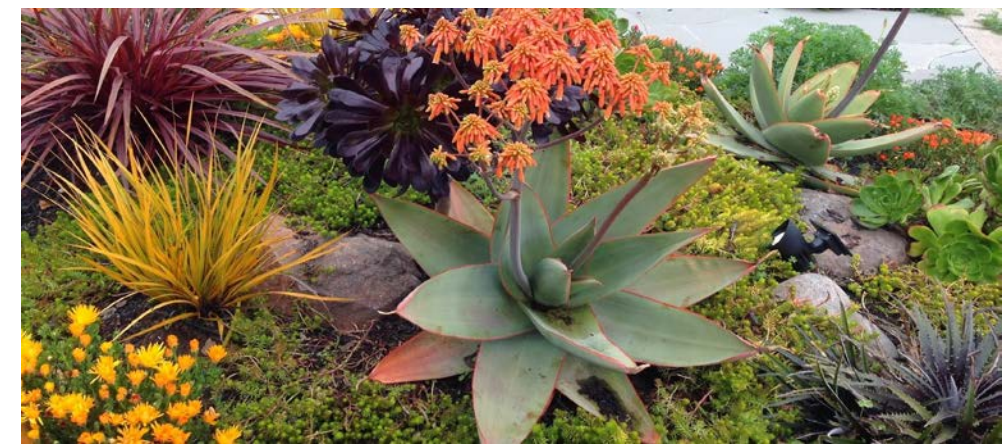


NatureScape

Four Components for Wildlife Habitat Certification



- 1) Food for insects, birds and animals
- 2) A water source
- 3) Cover and protection for animals
- 4) A place to raise their young



www.chulavistaca.gov/naturescape

- ***Find links to learn about:***

- Water-saving sustainable landscapes, online learning, videos
- Comprehensive guidebook on sustainable landscapes for creating NatureScapes
- Nifty Fifty Plants for Water Smart Landscapes
- Plants - growth size, sun and water needs - visit <http://www.ucanr.edu/sites/WUCOLS>
- Water saving tips
- Non-toxic pesticide alternatives



For information about NatureScape or Certified Wildlife Habitat designation:

Bob Coleman: rcoleman@chulavistaca.gov --- 619-476-5332



- Participate to this fun event in Chula Vista
- Once registered ride your bike to the Chula Vista Library and pick up your T-Shirt and refreshment (365 F Street Chula Vista CA 91910)
- For more information and to register please visit:
- [bike month \(icommutesd.com\)](http://icommutesd.com)

Beekeeping at Home

- Intro
- Gear and equipment
- Safety
- Seasons and needs



Barbara Locci

City of Chula Vista Employee

Resource: www.sandiegobeekeepingsociety.com

Questions: barbaralocci@hotmail.com

1. What happens to plastic waste?

- A. It is a biodegradable material, so it eventually disintegrates
- B. It never fully goes away; it just breaks down into little pieces
- C. There is no such thing as plastic waste, all plastic is recycled
- D. It is dumped in the ocean for fish to eat



Home Energy Efficiency

South Bay Earth Day

4/22/21



Department of Economic
Development

Office of Sustainability
Conservation Section

HOW TO MAKE YOUR HOME MORE ENERGY EFFICIENT

5 Steps to Zero Net Energy

Zero net energy (ZNE) means your home (or business) generates as much on-site renewable energy as it consumes in a year.

Energy Efficiency + Renewable Energy = ZNE

1 Become Knowledgeable

Learn how and when you use energy, and then create a plan for lowering your consumption using online resources.

- Residential: SDGE.com/myaccount
- Business: SDGE.com/business

2 Make Small Investments

Start with no-cost and low-cost ways to save big.

- Turn off lights, appliances and other equipment
- Use smart power strips for computers and electronics
- Install programmable and networkable smart thermostats
- Upgrade to high-efficiency LED bulbs

3 Go for Deeper Savings

Invest in the more extensive energy efficiency actions. Rebate programs and special financing are available to help you complete the process.

- HVAC systems
- Energy-efficient windows
- New ducts & insulation
- ENERGY STAR® appliances

4 Seal the Envelope, Maximize Savings

By sealing leaks in your home's thermal envelope you keep warm or cool air where you want it, and your home will have healthier indoor air quality.

- Windows
- Attic Spaces
- Doors
- Crawl Spaces

5 Ready for Renewables

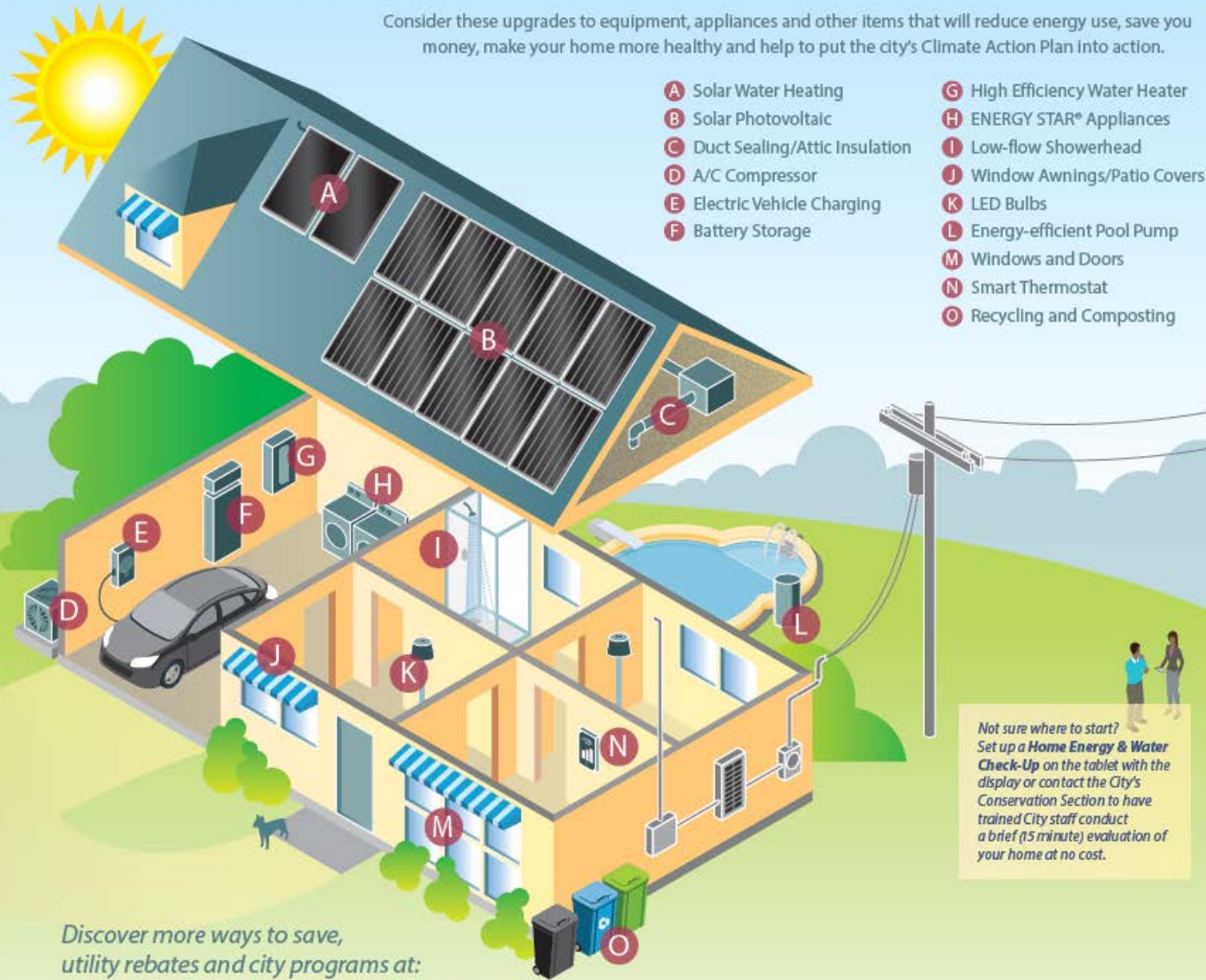
After reducing your energy demand, you're ready for clean energy to decrease your need for electrical grid power.

- Solar photovoltaics (PV)
- Community solar
- Solar water heating
- Battery storage devices

6 Enjoy

Your home is now designed to maximize your comfort and air quality while minimizing your bill and pollution. Share your experience with others by nominating yourself or someone you know for a Chula Vista CLEAN Sustainability Champion Award at www.chulavistaca.gov/clean.

Consider these upgrades to equipment, appliances and other items that will reduce energy use, save you money, make your home more healthy and help to put the city's Climate Action Plan into action.



6th Step - Decarbonize: Replace natural gas with a clean fuel

Not sure where to start? Set up a Home Energy & Water Check-Up on the tablet with the display or contact the City's Conservation Section to have trained City staff conduct a brief (15 minute) evaluation of your home at no cost.

Discover more ways to save, utility rebates and city programs at:
ChulaVistaCA.gov/clean

If you have any questions please contact the City of Chula Vista Conservation Section at 619-409-3893 or conservation@chulavistaca.gov.



Connect with us
f t i -- @thinkchulavista

Existing Home Sustainability Ordinance

Requires homes built **before 2006** to include additional energy efficiency when they made **additions or structural remodels**

Location	Year Home Was Built	Required Energy Efficiency Measures
All City	2006	0
All zip codes except 91914	2005 to 1979	2
All zip codes except 91914	1978 or older	3
91914	2005 or older	4



- LED Lighting
- Water Heating Package
 - Water heating blanket
 - Low flow fixtures
 - Hot water pipe insulation
- Attic Insulation
- Duct Sealing
- Home Air Sealing
- Cool Roof
- High Efficiency Windows
- High Efficiency Water Heater
- High Efficiency Air Conditioner

www.chulavistaca.gov/departments/clean/retrofit

Existing Home Sustainability Ordinance

Exemptions

- Similar measures have already been completed or will be incorporated
- Energy efficient or fully solar home
- Low-income homeowner
- Infeasible or not cost effective due to unique home features
 - HOA restrictions, historic home
- Accessory Dwelling Unit (ADU)
- Medically necessary improvements
- Repairs



Support Resources

- [MAAC Weatherization](#)
- SDG&E
 - [Energy Saving Assistance Program](#)
 - [Rebates](#)
- [Go Green Financing](#)
- [GRID Alternatives](#)
- [Home Energy Score](#)



Sustainable Home Toolkit

Tools:

- Kill-A-Watt Meter
- IR Thermal Imager
- Natural Gas Detector
- LED Light Bulb
- Weather-stripping
- Outlet Gaskets
- Water Flow Rate Bag
- Detect-A-Leak Tablets
- Faucet Aerators
- Low-flow Showerhead



www.chulavistaca.gov/departments/clean/home-toolkit

Sustainable Home Toolkit



DO-IT-YOURSELF

Sustainable Home Toolkit

USER GUIDE



This guide will help you use the Sustainable Home Toolkit to maximize your energy and water savings and reduce waste!



HOW TO BEGIN USING ENERGY SAVING TOOLS

First, you'll want to understand what your current energy usage looks like so you can calculate (and celebrate!) your energy savings and fill out Tracking Energy and Water Use forms to calculate your average energy usage.

How to Read Your Energy Bill

How to access your bill data on SDG&E's website

- Log in to your SDG&E account
- Bills & Payments tab > Bill History
- Click on Statement Date for the three (or more) most recent billing periods to download PDFs of your bills

Click on the "My Energy" tab to take a deep dive into your energy use and find ways to save!



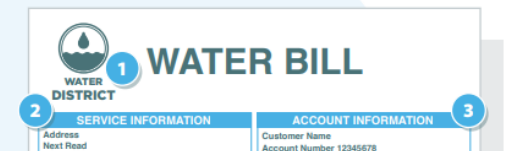
HOW TO USE WATER SAVING TOOLS

Water is one of our most precious natural resources, but with climate change stressing our already variable rainfall and growing population there is more demand on our limited water resources than ever before.

Thanks to the efforts of San Diego's water agencies, we've been able to strengthen our community's water supply through various resources. However, it's up to each of us to do our part to reduce our use and make sure our water consumption is as efficient as possible. Here are some simple steps to help.

How to Read Your Water Bill

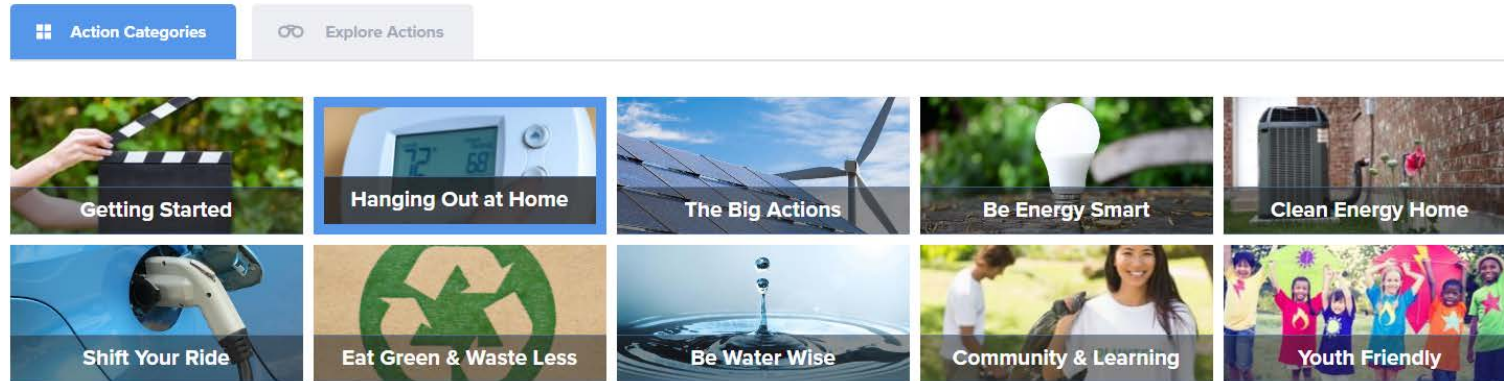
1. You can easily find your water district contact numbers and information.



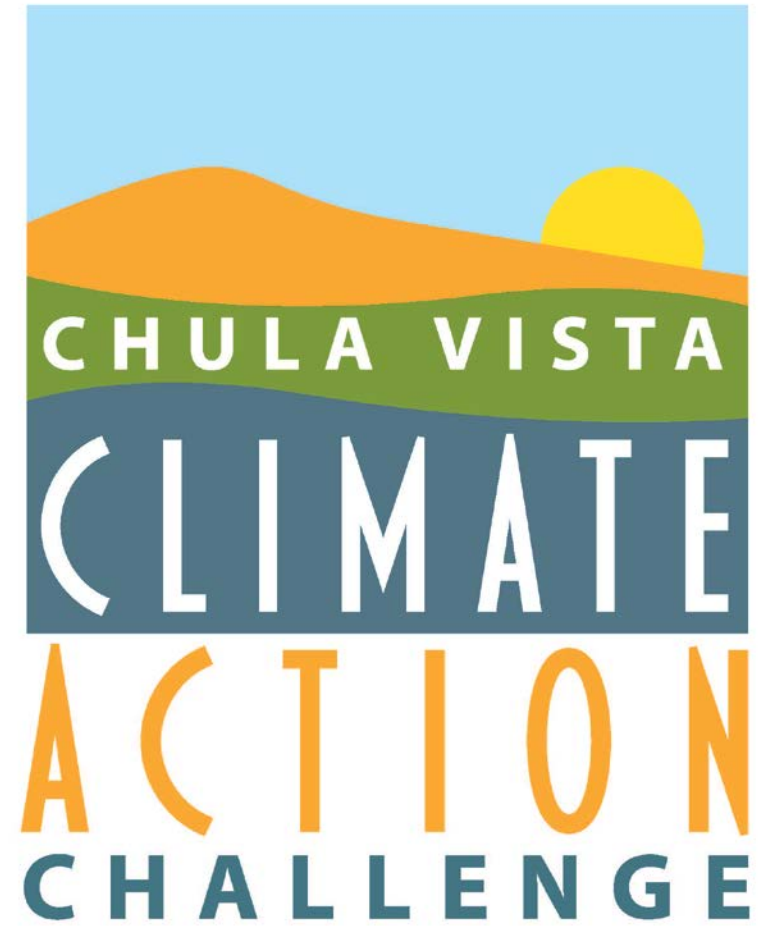
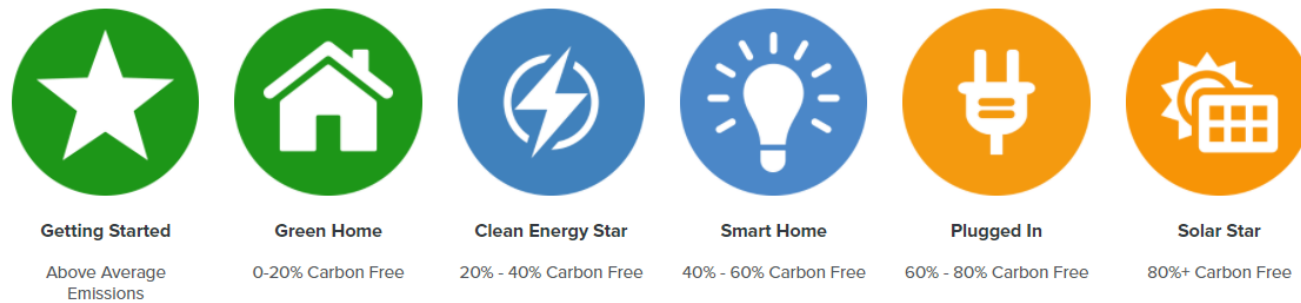
RECYCLING AND REDUCING WASTE

Recycling and reducing the waste you send to the landfill is another way to live sustainably. Luckily there are a ton of opportunities and resources available to you in Chula Vista.

Climate Action Challenge



Challenge Levels



Climate Action Challenge



South Bay Eco Justice & Chula Vista Partner in Courage

INVITE TEAM MEMBERS

Our impact



29,980

TOTAL POINTS



13/7

NEW/PREVIOUS
ACTIONS COMPLETED



\$4,890

DOLLARS SAVED

11

TONS CO₂E

0

KWH SAVED

41

THERMS SAVED

582

GALLONS GAS SAVED

0

GALLONS WATER
SAVED

Members

My posts

Create post



Jim and Carolyn

04/25/2020

South Bay Eco Justice & Chula Vista Partner in Courage

Environmental Voter Project

Great organization with mission to increase voting rates for environmentalists, many of whom do not vote.

<https://www.environmentalvoter.org>

Comment

0 0 0

Write a comment...



Jim and Carolyn

04/25/2020

South Bay Eco Justice & Chula Vista Partner in Courage

Dr. Katharine Keyhoe TED talk

Katharine Hayhoe: The most important thing you can do to fight climate change: talk about it

COMMUNITY LEADERBOARD

TEAM LEADERBOARD

NEIGHBORHOOD LEADERBOARD

1



Bonita Vista High School- organized by Ms. Leon

145,030

2



Hilltop High Community Group

41,220

3

Otay Ranch High School

30,870

4



South Bay Sustainable Communities Network

30,230

5

South Bay Eco Justice & Chula Vista Partner in Courage

29,980

6



Chula Vista Recreation Department

28,090

See all (8)

www.chulavistaca.gov/clean

THANK YOU

Questions?



Cory Downs
Sustainability Specialist
cdowns@chulavistaca.gov



Sign up

Start changing!

Visit www.chulavistaca.gov/clean

Your actions make a difference!



www.chulavistaca.gov/clean



22 April 2021

South Bay Virtual Earth Day

Sweetwater Authority

What to celebrate this Earth Day?

What is in your home that sustains life just like the air you breathe? Hint: You use it to clean, cook, drink, and grow plants. You guessed it – **water!** Water is one of our most precious resources that we use for almost everything we do, but we often take clean water for granted like breathable air.

Sweetwater Authority treats and distributes safe, reliable water through its pipelines to approximately 200,000 customers in National City, western Chula Vista and Bonita. A lot of work goes into making sure the water from your tap is always there and always safe to drink.



A precious resource – use it wisely

This Earth Day we want to remind our customers and everyone who enjoys safe, reliable water from a tap to use this precious resource wisely. Sweetwater Authority provides incentives and information to help customers avoid wasting water and use water efficiently.

For details, visit: www.sweetwater.org/waterefficiency



Water Smart Leak Detector Rebate (\$100) and Leak Bill Credit (up to \$75)

Fix A

Water Smart Leak Detector

- Technology in our lives is everywhere and growing rapidly, and the water industry is no exception. Customers can now purchase a water smart leak detector for their home that can provide real time alerts for a possible leak and help customers track their water usage.
- Customers can choose from either a plumbed device (connected to the water line) or a device that attaches to their water meter.
- Best of all, customers can receive a \$100 rebate for the purchase of a water smart leak detector.
- Apply at www.sweetwater.org/rebates before June 20, 2021.
- After July 1, 2021 customers can apply for this rebate from SoCalWaterSmart at www.socalwatersmart.com



Fix A Leak Bill Credit

- Customers that find and repair a leak before July 1st can receive a \$75 Fix A Leak bill credit
- Apply at www.sweetwater.org/fixaleak

Landscape Transformation Rebate –

up to \$3/ ft²

Landscapes and gardens provide wonderful scenery for our homes and apartments. Some landscapes, like a grass covered lawn, require a lot of water that doesn't naturally fall from the sky as rain in Southern California. To use water wisely, our local water wholesaler, the San Diego County Water Authority, is providing a rebate of up to \$3/ square foot to remove grass and replace it with a "water smart" landscape consisting of climate appropriate plants with efficient irrigation. This is a great opportunity for anyone considering a landscape "makeover" and looking to save on their landscape irrigation costs.

- Customers can apply online at www.socalwatersmart.com

For more information on any of the above rebates and bill credits call 619-409-6779 or email waterefficiency@sweetwater.org .



BACKYARD COMPOSTING LIVE STREAM



- Why compost?
- Composting basics
- Showcase hot pile/vermicompost system

Katharine Mathews
Living Coast Discovery Center
Facilities and Sustainability Manager
katharine@thelivingcoast.org





TIPS:
TO REDUCE
TO REUSE
TO RECYCLE
TO ZERO WASTE



On the path to Zero Waste



What are the 3 "R's"?

By reducing, reusing, and recycling we make less garbage!



REDUCE

Create less garbage.



REUSE

Find new ways to use old items or use it more than once.



RECYCLE

Turn used items into new products.

DO YOU KNOW WHAT TO RECYCLE CURBSIDE?

ONLY place these items in the recycling container



NEVER place these contaminants in the recycling container



WHAT TO DO WITH THOSE HARD TO DISPOSE OF ITEMS

- **DISPOSING COOKING OIL:**

WHAT NOT TO DO

Don't Pour Down Drain/Sink



Don't Pour Down Toilet

COOKING OIL
It's easy to dispose of your cooking oil!

Put used cooking oil in a bottle/container with a watertight lid. Call Republic Services at (619) 421-9400 two days before your regular collection day. Then put your oil at the curb.

OR

Take oil to the Household Hazardous Waste Collection Facility* located at 1800 Maxwell Road on Wednesdays and Saturdays from 9 am -1 pm.

A photograph showing a hand using a metal strainer to lift fried food from a pot of cooking oil. The oil is being poured into the strainer, illustrating the process of collecting used cooking oil for disposal.

ALWAYS REMEMBER...



Empty clean and dry

Scrape it out, pour it out and keep it clean to prevent contamination.



Never bag or bundle

Always put recyclables loose in the cart.



Tangle free

Keep tanglers out of the recycling cart. Tanglers include, but not limited to, hoses, plastic bags, cords, ropes and wire hangers.



Household Hazardous Waste

Don't throw it away! Take all HHW to the City's Household Hazardous Waste Facility located at 1800 Maxwell Rd. Facility hours are Wednesday and Saturday 9am – 1pm.

What to do with those hard to dispose of items



Problem:

Putting batteries and electronics in your recycling

- **Creates fire hazards by starting fires**
 - **at the landfill**
 - **in the trash truck**
 - **at the recycling facility**
- **They can contaminate recyclables**



Solution:

Take them to the City's Household Hazardous Waste Facility located at 1800 Maxwell Rd CV, CA 91911. The facility is open on Wed and Sat from 9 am – 1 pm and no appointment is necessary.





**TAKE THE GUESS WORK OUT OF IT
REDUCE WHAT YOU GENERATE
REUSE OR WORK TO GET TO ZERO WASTE**





LET'S PLAY A GAME

WHAT CAN WE RECYCLE?





RECYCLABLE OR TRASH?



Plastic Straws





RECYCLABLE OR TRASH?



Paper Plates, Cups and Bowls



RECYCLABLE OR TRASH?



Clear Plastic Cups

 *RECYCLABLE OR TRASH?* 



Styrofoam Containers





RECYCLABLE OR TRASH?



Plastic Containers



RECYCLABLE OR TRASH?



Cardboard wrapped in film plastic



QUESTIONS?



Martie Solomon

Recycling Specialist II

City of Chula Vista

Email: msolomon@chulavistaca.gov

Phone: (619) 750-8904



On the path to Zero Waste



2. How many million tons of plastic are dumped in our oceans every year?

A. 1 million tons

B. 8 million tons

C. 20 million tons

D. 50 million tons





Need help paying your past-due rent and utilities?



Visit

chulavistaca.gov/tenanthelp



Call

(619) 271-1805

Chula Vista residential tenants (renters) who have experienced financial hardship due to the COVID-19 pandemic may qualify.

If you are not a resident of Chula Vista, but live within San Diego County, rent and utility resources are available at www.ERAPsandiego.org

This project is being supported, in whole or in part, by federal award number ERA0131 awarded to the City of Chula Vista by the U.S. Department of the Treasury.



Who we are

GRID Alternatives is a nonprofit organization that has been installing solar systems exclusively for low-income communities since 2004.

Disadvantaged Communities – Single-Family Solar Homes (DAC-SASH)

Provide no-cost solar to homeowners that qualify as low-income reducing household electricity costs by up to 80%.

For more information

GRID HQ Hotline: (866) 921-4696

Email: sdoutreach@gridalternatives.org

Solar on Multifamily Affordable Housing (SOMAH)

Offers financial incentives for installing solar on multifamily affordable housing in California. SOMAH rebates can offset most if not all the solar installation cost reducing operating expenses, while extending significant utility bill savings to residents.

For more information

Call Victor Reyes (Solar Multi-Family Assistant): (619) 535-3399

Email: Vreyes@gridalternatives.org



SAN DIEGO ← 350

CLIMATE CHANGE ACTION

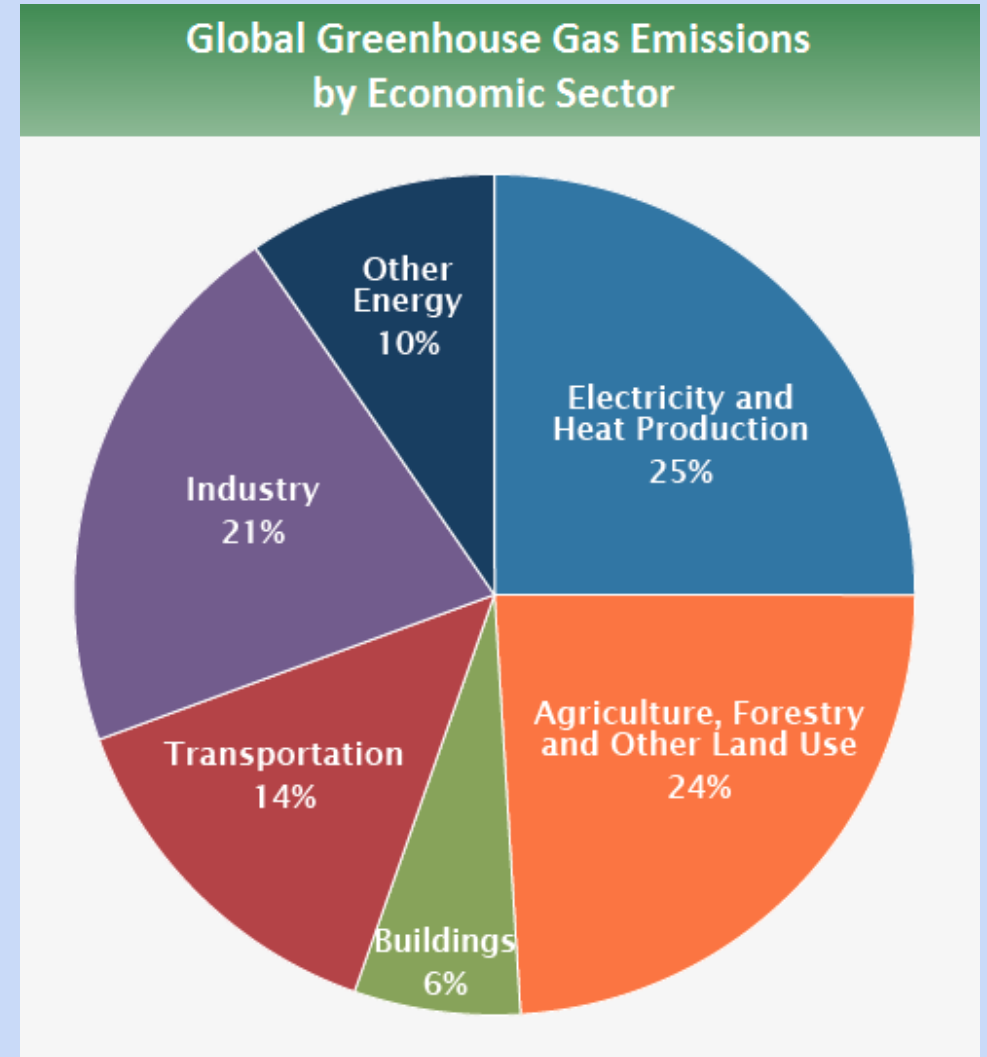
Food, Soil and Climate Change

Anne Sheridan, Co-chair
SanDiego350 Food and Soil Committee
South Bay Earth Day - April 22, 2021

Climate Impact of Food

Agriculture is the second largest sector of global greenhouse gas emissions. Most of this comes from:

- Livestock Emissions
- Land Use Change



Livestock Emissions

- Enteric Fermentation:
Ruminant animals (cows, sheep) release methane through digestion
- Manure management
- Animal products are more resource intensive



Deforestation

Carbon is stored in plants and soil. When carbon is mixed with oxygen it creates carbon dioxide.

This happens when trees are removed or when the soil is “disturbed” i.e. tilled or left uncovered.



Food and Soil Solutions

Out of Project Drawdown's 100 solutions for decreasing greenhouse gases quickly, safely, and equitably, 25 deal with agriculture and preserving land use.

- Reducing Food Waste (#3)
- Adopting Plant-Rich Diets (#4)



Food Waste

About 40% of all food is wasted in the United States.

This is equivalent to **1,250 calories per person per day.**



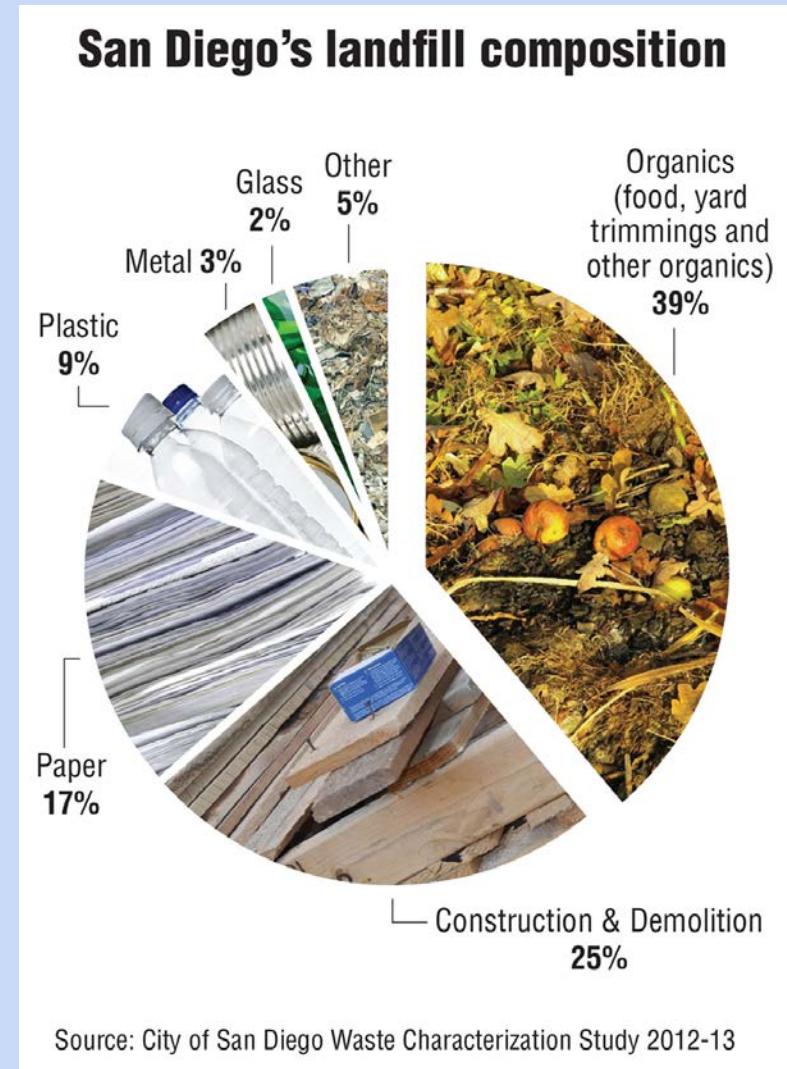
Wasted Resources

- Fertilizers and pesticides
- Fossil fuels for growing, transportation, refrigeration, packaging
- Fresh water
- Labor and money (\$220 billion annually)



Food Waste and Landfills

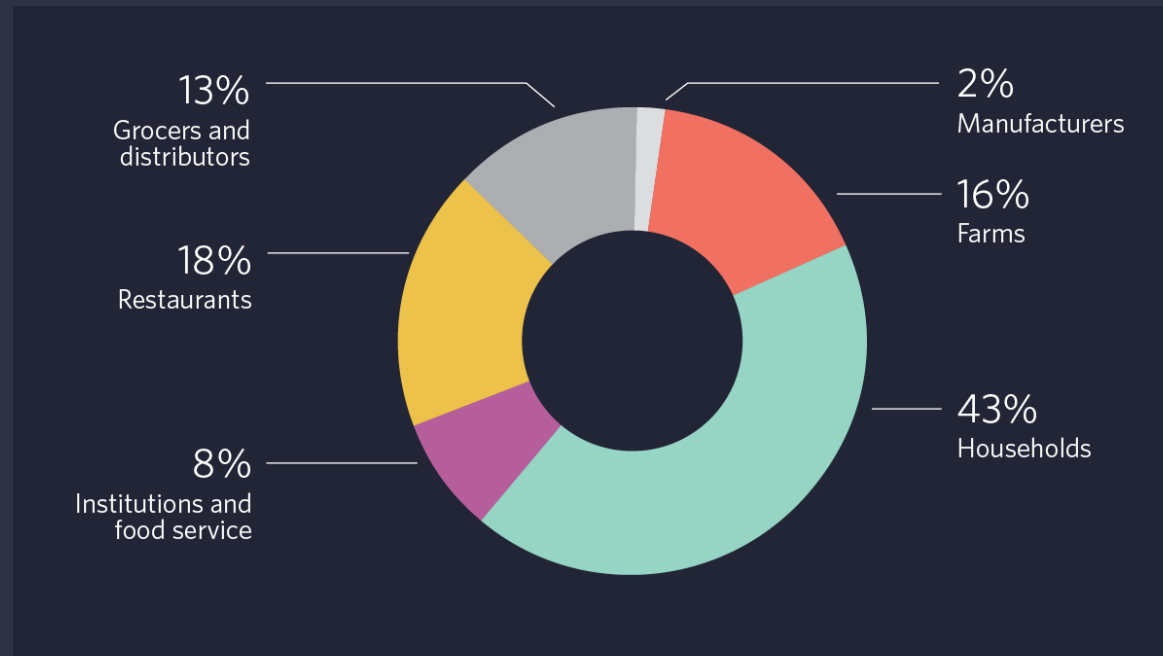
- Organic matter is the largest component of trash in the U.S.
- CA must reduce organic waste by 50% by 2020 and 75% by 2025. Of that 20% must be recovered for human consumption.



Where Waste Occurs

Food Is Wasted at Every Stage

Food goes unused as it moves from farms to grocery stores, homes and restaurants. Households throw out the most food of any stop on the chain.



Source: Natural Resources Defense Council, "Wasted," 2017

© 2018 The Pew Charitable Trusts



Prevention and Recovery

- Standardize date labeling
- Improve tracking for inventory and waste
- Smaller plates and trayless dining
- Resell imperfect and unwanted food
- Increase donations through tax incentives, legislation, and improved infrastructure

Food Waste at Home

- Plan your meals
- Use a shopping list
- Store produce properly
- Know what's in your fridge
- Use your freezer
- Don't rely on "best by" dates
- Use as more of the plant (e.g. beet greens)



Recycling

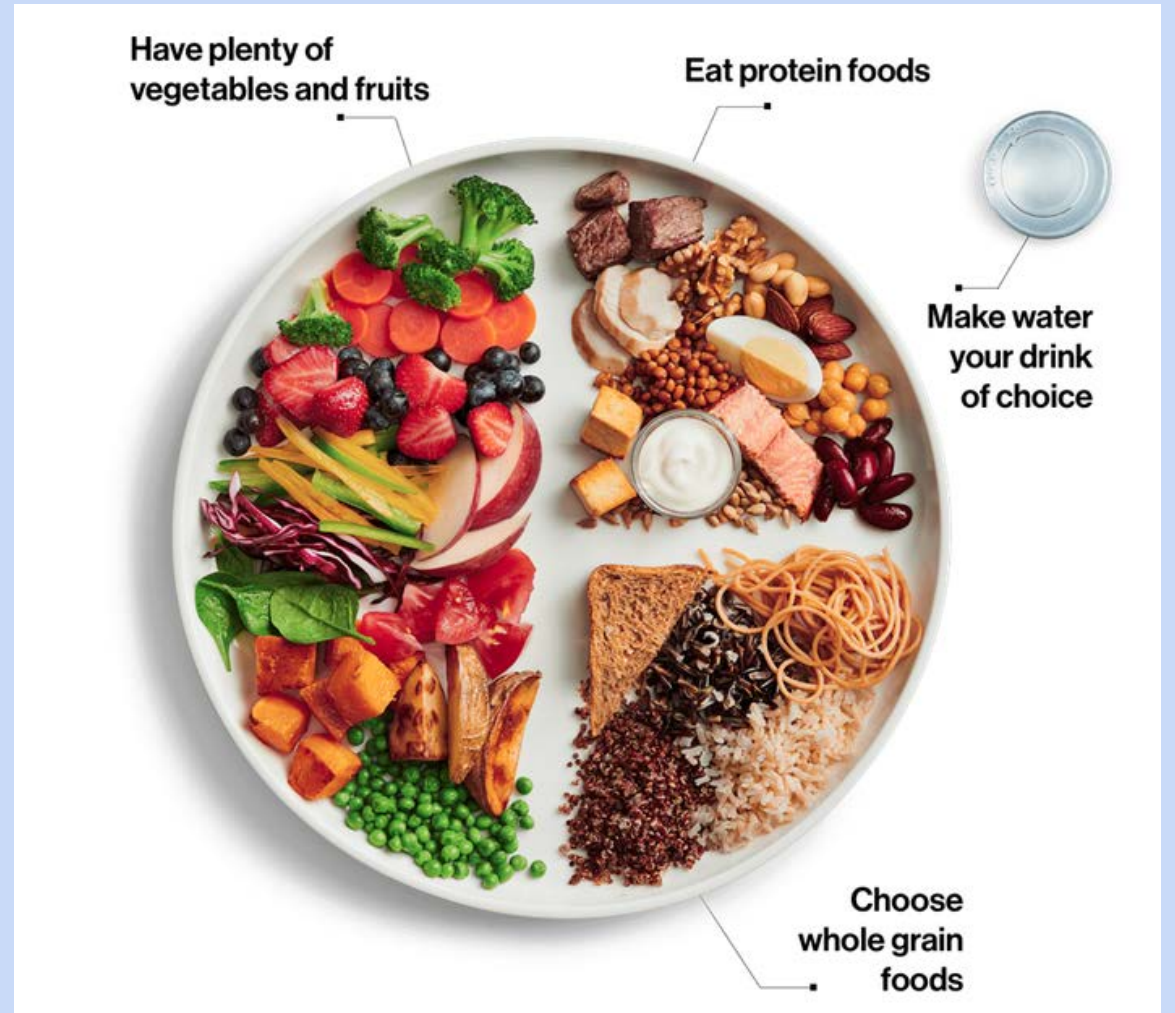
Compost is a soil amendment, lessening the need for nutrients, water, and fertilizers.

- Backyard Composting
- Curbside Collection



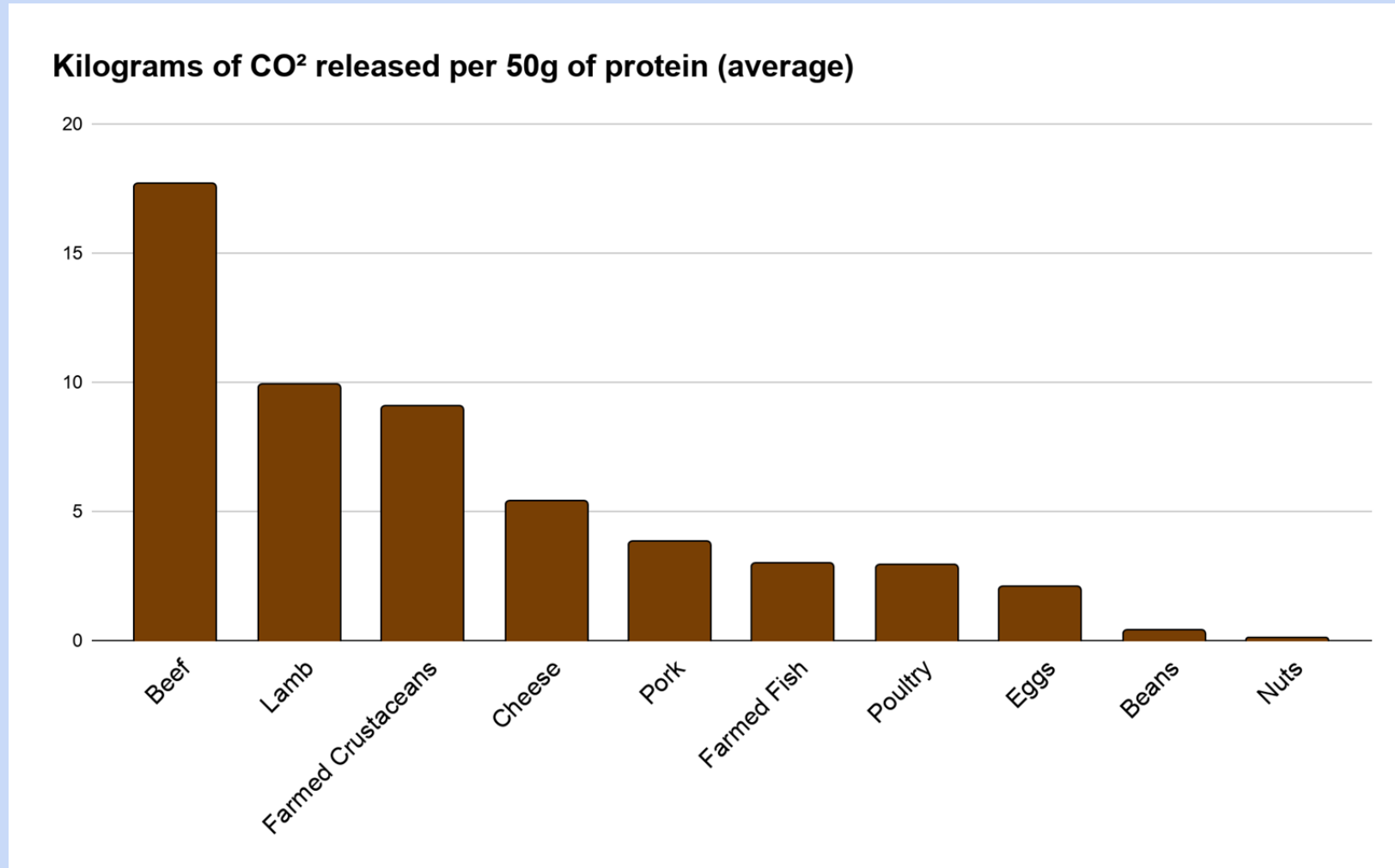
Adopting a Plant-rich Diet

At least 75% of our food should be come from plants.



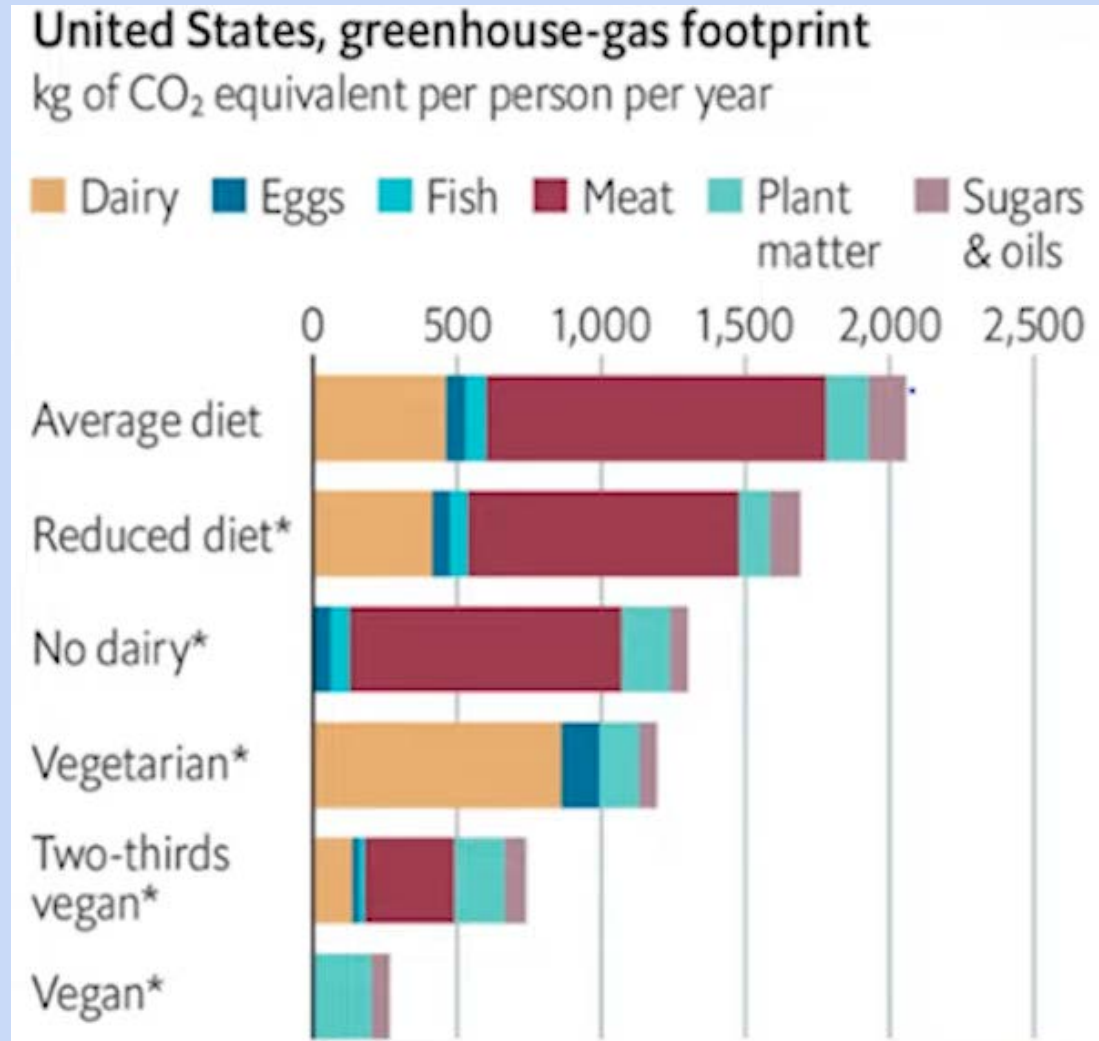
Source: Canadian Department of Health

Comparing Protein Sources



Source: Poore and Nemeck, *Science* (2018)

Impact by Diet Type



Source: *The Economist*/Kim et al. (2019)



Using Agriculture to Store Carbon

- Minimize soil disturbance with no or low tilling
- Plant a diversity of crops
- Incorporate perennial crops and trees
- Keep soil covered with mulch or cover crops
- Use compost instead of synthetic fertilizers





What To Do Next

1. Conduct a food waste audit of your household.
2. Incorporate more climate-friendly foods into your diet.
3. Reconnect with how our food is grown - support organic and regenerative farmers.
4. Grow your own food and use your yard as a carbon sink by adopting carbon-storing practices.
5. Advocate for policy changes in local government and our places of business - contact us at foodandsoil@sandiego350.org for how to get involved or sd350.org to learn more.

State of Organics in Chula Vista

David DiDonato
Recycling Specialist

South Bay Earth Day @Home
April 22, 2021



Organic Waste Recycling

Republic Services new program

- Residential
 - Single-family units
 - Multi-family units
(Apartments & condominiums)
- Commercial businesses



Residential

▶ **Single-family units** (weekly collection)

- Green organic waste cart:
Food waste, food soiled paper /
cardboard, and yard waste

▶ **Multi-family units** (Apartment and condominiums)

- Green organic waste bin / cart:
Food waste, food soiled paper /
cardboard



FOOD WASTE



Coffee Grounds,
Eggs, Eggshells, Fruits
and Vegetable Scraps



Moldy Fruit
and Vegetables



Moldy Bread,
Cereals, Tortillas,
Rice, and Beans



Meat and
Bones



Spoiled and
Moldy Dairy



Seafood



FOOD-SOILED PAPER PRODUCTS



Paper Towels
and Napkins



Pizza Boxes



Coffee Filters
and Tea Bags



Takeout
Containers



Paper Plates

YARD WASTE



Grass Clippings



Tree and Brush
Clippings



Leaves



Flowers and
Houseplants

Accepted
Items
(Residential)

Commercial

► Businesses

- Green food waste bin / cart:
Food waste, food soiled paper / cardboard



FOOD WASTE



Coffee Grounds,
Eggs, Eggshells, Fruits
and Vegetable Scraps



Moldy Fruit
and Vegetables



Moldy Bread,
Cereals, Tortillas,
Rice, and Beans



Meat and
Bones



Spoiled and
Moldy Dairy



Seafood



FOOD-SOILED PAPER PRODUCTS



Paper Towels
and Napkins



Pizza Boxes



Coffee Filters
and Tea Bags



Takeout
Containers



Paper Plates

YARD WASTE



Grass Clippings



Tree and Brush
Clippings



Leaves



Flowers and
Houseplants

Accepted
Items
(Commercial)



Leave these items out
of your Green Organics
Container

Keep These *Out!*



KEEP IT LOOSE.
NO Plastic or
Compostable Bags.



REUSE Plastic Grocery Bags.
TRASH Plastic Film Wrap.



NO Foam Products.
Avoid Using Them.



NO Plastic Takeout
Containers.



NO Plastic or
Compostable Cutlery.



NO Rubber Bands or Twist Ties.
Remove and Place in Trash.



NO Glass of any Kind.
Recycle Unbroken Bottles.



NO Painted or
Chemically Treated Wood.



NO Rocks, Dirt, Nails,
Concrete or Asphalt.

Why Recycle Organics?

Republic Services will process the collected organics into compost



- ▶ Organics are 50% of what goes into California's landfills
- ▶ Organic waste emits methane gas
 - ▶ 84 times more potent than carbon dioxide (CO₂)
 - ▶ In California, landfills produce 20% of the state's methane emissions

- Updated information about the program
 - Educational mailers
 - Newsletters
 - Social media
 - Website

**Beginning in 2022:
Residential Food Waste Collection**
In compliance with statewide regulations, the City of Chula Vista will be required to include food waste to current yard waste collection services.

What you need to know:
Republic Services is currently developing a food waste collection program. Yard waste and food waste will be collected together in your green waste cart. This new program will increase monthly costs.

Future collection will include:
Yard waste **PLUS... all food waste!**

What will be collected?
• Bread/Crums
• Fruits and Vegetables
• Seafood, Meats, and Dairy
• Coffee Grounds and Filters.

Future benefits of composting food and yard waste
• Keeps organics out of the landfill
• Reduces release of greenhouse gases into the atmosphere
• Cleaner air, combats climate change

ORGANICS: Easy as 1-2-3
ORGANIC WASTE includes yard waste, unpainted/untreated wood, flowers, weeds, house plants (without pot and dirt), food waste, and food-contaminated paper. [Here's what you can do now:](#)

Questions?

David DiDonato

Recycling Specialist

ddidonato@chulavistaca.gov

619-476-2409



CITY OF
CHULA VISTA



Office of Sustainability

Environmental Services Section
environmentalservices@chulavistaca.gov

3. Which of the following are negative impacts of burning fossil fuels?

- A. They contribute to environmental degradation and pollution**
- B. They harm local communities**
- C. They contribute to human health problems**
- D. All of the above**



South County Residential Gleaning Organizations

**PRODUCE
GOOD**

www.producegood.org

760/492-3467

info@producegood.org



www.seniorgleanerssdco.org

619/633-9180

info@seniorgleanerssdco.org



www.ilovetoglean.org

619/598-4912

info@ilovetoglean.org





www.ilovetoglean.org



I Love to Glean's South County Food Hub provides a strategic capability to South San Diego County by increasing the capacity for recovery, storage and distribution of otherwise wasted edible food to agencies and kitchens serving those in need

Our first birthday is April 17th and we have delivered over 3.5 million pounds of nourishing food in our first year

We need your help – to volunteer, donate or have if you have other questions or ideas, please contact us:

info@ilovetoglean.org

619/598-4912

Trash-Free Year

A year-long, trash-free lifestyle experiment

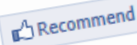
by

Jen Metz Kane
Honolulu, Hawai'i

Oahu may send trash to Washington state

By Britt Yap, The Associated Press
Posted: 07/15/2009

Oahu's trash still waiting to be shipped out



Be the first of your friends to recommend this.

Posted: Mar 05, 2010 12:50 PM
Updated: Mar 05, 2010 6:06 PM

By Jim Mendoza - bio | email

KAPOLEI (HawaiiNewsNow) - At least ten times -- that's how many times Hawaiian Waste Systems has said it would start shipping out Oahu's trash but canceled for one reason or another.

"Either they start shipping or we cancel the contract and go with the next bidder," city council member Ann Kobayashi said.

Kobayashi heads the Public Infrastructure Committee. On Tuesday she pressed Hawaiian Waste official for a definite start date but couldn't get an answer.

It's now six months into Hawaiian Waste Systems \$10 million a year contract with the city. It's now storing 25,000 tons of waste on three different sites in Campbell Industrial Park.. Some of it is wrapped and stacked and some of it is in containers.

The company was supposed to be taking 2,000 tons of garbage a week. Because of the delays the city cut it back to 200 tons a week.

"It's very frustrating," Environmental Services director Tim Steinberger said. "We have to sit down and go over this with the contracting officer and with corporation counsel and then look and see what our options are," he said.

Hawaiian Waste Systems is waiting for the final clearance on an environmental assessment of its operation by the U.S. Department of Agriculture.

Company shareholder Ron Chutz told Hawaii News Now that Hawaiian Waste is working with the USDA to move the trash to a landfill in Washington state. He said he sees "no significant hurdles that can't be managed."

"It looks very positive for us to be shipping by the beginning of the year, hopefully," he said.

Kobayashi doubts it.

"They don't even have a permit with a shipper yet," she said.

Since a lot of the garbage is bulky trash, sanitation hasn't been a problem. "The city won't pay Hawaiian Waste Systems a penny until the shipment of garbage begins - whenever that is."

Ready to Ship in Hawaii: 20,000 Tons of Garbage

By MICHAEL COOPER
Published: May 22, 2010

KAPOLEI, Hawaii — At first glance, it does not look much like garbage. More than 20,000 tons of it have been shrink-wrapped into green bales that are neatly stacked, ready to ship about 2,300 miles across the Pacific to the mainland as another export — "opala," as garbage is called in Hawaiian.



Enlarge This Image



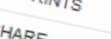
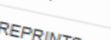
Marco Garcia for The New York Times
Robert D. Harris of the Sierra Club examining garbage delayed for shipping to the mainland.

But the trash's passage has been delayed again and again since it first began piling up here in the tropical heat last September. Now, when the wind changes, it offers a pungent reminder of how Oahu's latest plan to dispose of some of its trash has gone awry.

where Interstate highways do not actually go between states, the options for getting rid of garbage are limited.

That is how officials here hit upon the idea of shipping some of their garbage to the mainland, at least temporarily. But what was supposed to be a quick fix has turned into a long-running problem after the company that was hired to ship the trash failed to get necessary permits from the federal government.

Some environmental groups were leery of the idea from the start, arguing that Oahu should be doing more to reduce the amount of waste it generates and recycling more of it, rather than exporting it.





Trash = Free Year

- ❑ Rules
- ❑ Challenges
- ❑ Triumphs
- ❑ Lasting changes

Definitions and Rules

Trash – any item that cannot be composted, recycled or reused here in Hawaii that would normally end up in my trash can at home, at work or while I am out and about.

Recyclable – any item that can be accepted for recycling here on Oahu.

Compostable – any item that will break down into soil if I put it in a compost pile or worm bin.

1. The experiment starts on January 1, 2011 and ends on December 31st, 2011.
2. Any consumer choices I have made before January 1, 2011, do not apply.
3. “Trash” items that are given to me when I do not have a choice in the matter do not count.



Trash = Free Year

- ❑ Rules
- ❑ Challenges
- ❑ Triumphs
- ❑ Lasting changes















Trash = Free Year

- ❑ Rules
- ❑ Challenges
- ❑ Triumphs
- ❑ Lasting changes





Usable soil after 6 months

food waste

shredded paper

coffee grounds

worms crawl in

7,100 views in 2012

Crunchy numbers

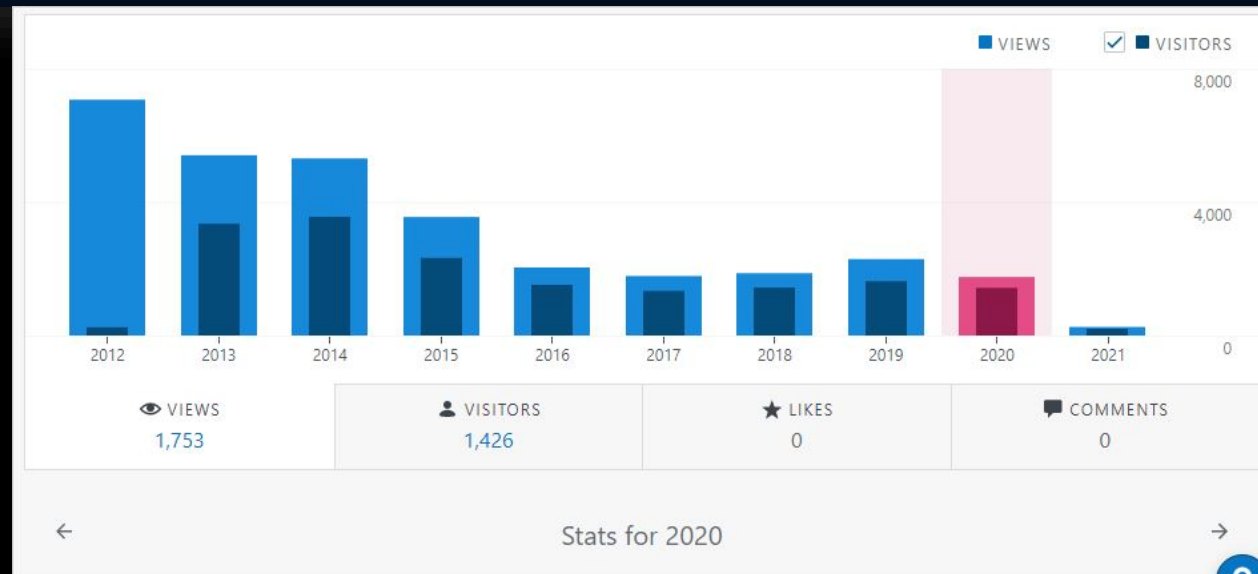
600 people reached the top of Mt. Everest in 2012. This blog got about **7,100** views in 2012. If every person who reached the top of Mt. Everest viewed this blog, it would have taken 12 years to get that many views.

In 2012, there was **1** new post, growing the total archive of this blog to 26 posts. There were **17** pictures uploaded, taking up a total of 3 MB. That's about a picture per month.

The busiest day of the year was January 1st with **125** views. The most popular post that day was **Week 52: Trash-Free Totals and a New Year's Toast**.



1,752 views in 2020





Trash = Free Year

- ❑ Rules
- ❑ Challenges
- ❑ Triumphs
- ❑ Lasting changes







Trash-Free Silver



- Use reusable shopping bags
- Bring your own straw
- Bring your own coffee/tea mug

Trash-Free Gold



- Use reusable shopping bags
- Bring your own straw
- Bring your own coffee/tea mug
- Use cloth napkins instead of paper towels
- Bring your own eating-ware
- Buy bulk foods / refillable products
- Use menstrual cup

Trash-Free Green



- Use reusable shopping bags
- Bring your own straw
- Bring your own coffee/tea mug
- Use cloth napkins instead of paper towels
- Bring your own eating-ware
- Buy bulk foods / refillable products
- Use menstrual cup
- Compost
- Consider packaging when purchasing
- Make your own (bread, yogurt, deodorant, cleaning supplies, etc.)



Mahalo!!

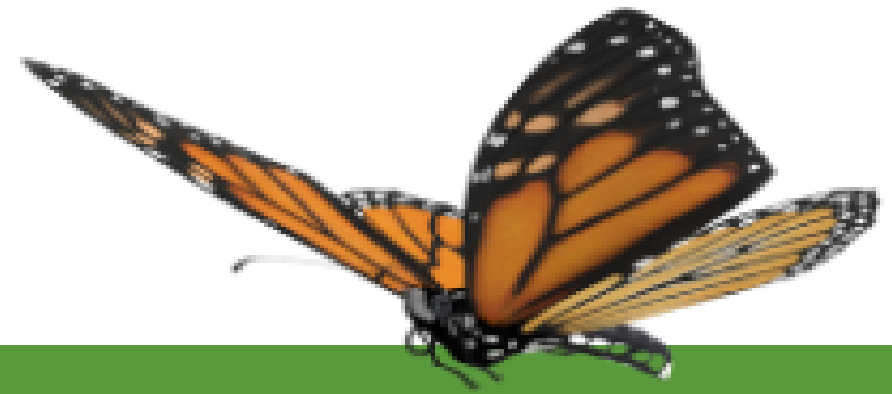
www.trashfreeyear.wordpress.com



Nicolette Frank

Upcycled Fashion

you can contact me on
instagram : [@nicolette.alicia_](https://www.instagram.com/nicolette.alicia_)
or email : nicolettealicia@gmail.com

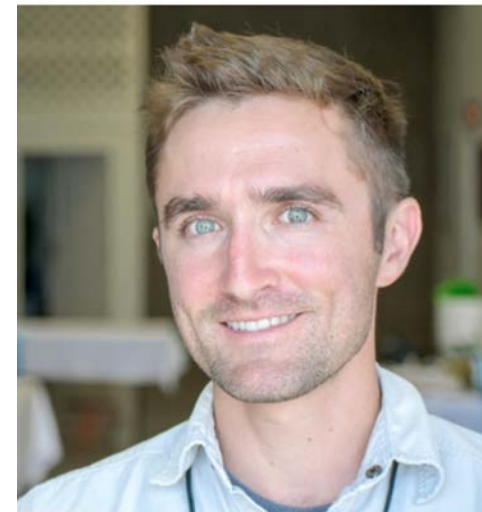


Video Spotlight

Soil – A Precious Resource

Professor Mark Valen
Southwestern College

<https://youtu.be/b9wGmuYNIWQ>



Email mvalen@swccd.edu
Phone (619) 421-6700 x5371
Office 49A-101A, Chula Vista





Thank you for joining us!

Conservation Division

Energy & Water Efficiency Programs

Phone: (619) 409-3893

E-mail: conservation@chulavistaca.gov

Environmental Services Division

Solid Waste Programs

Phone: (619) 691-5122

E-mail: environmentalservices@chulavistaca.gov

Follow us!



@chulavistaclean

chulavistaca.gov/clean

