



SUMMER SUSTAINABILITY SERIES

- Presentation will begin shortly
- Session will be recorded
- Participants are muted
- Please be aware of Q&A at bottom of screen – ask your questions here
- We will address questions at various points in the session

www.chulavistaca.gov/clean



SUMMER SUSTAINABILITY SERIES

www.chulavistaca.gov/clean

- August 5th, 4 PM - SB1383; How Will the New Organic Waste Law Affect Chula Vista
- August 19th, 12 PM - Energy Benchmarking
- September 2nd, 4 PM - Recycling 101- Are You Wish Cycling or Really Recycling?
- September 16th, 4 PM - Chula Vista's Zero Waste Plan
- Recorded past webinars



**All attendees are muted
Please type your questions in the question box**

JULY 15, 2021



SUSTAINABILITY SERIES

PROTECTING OUR WATERWAYS STARTS AT OUR STORM DRAINS

Kimberly Valenzuela, Storm Water Environmental Specialist

Storm Water Management Section

Who are we?

5

WHAT DO WE DO?

REGIONAL MS4 PERMIT

Implem ents requirem ents of the
Clean Water Act & Federal NPDES
regulations

PROGRAM

Monitoring, Inspections, Watershed
Collaboration, Storm Water
Ordinance Enforcem ent

EDUCATION

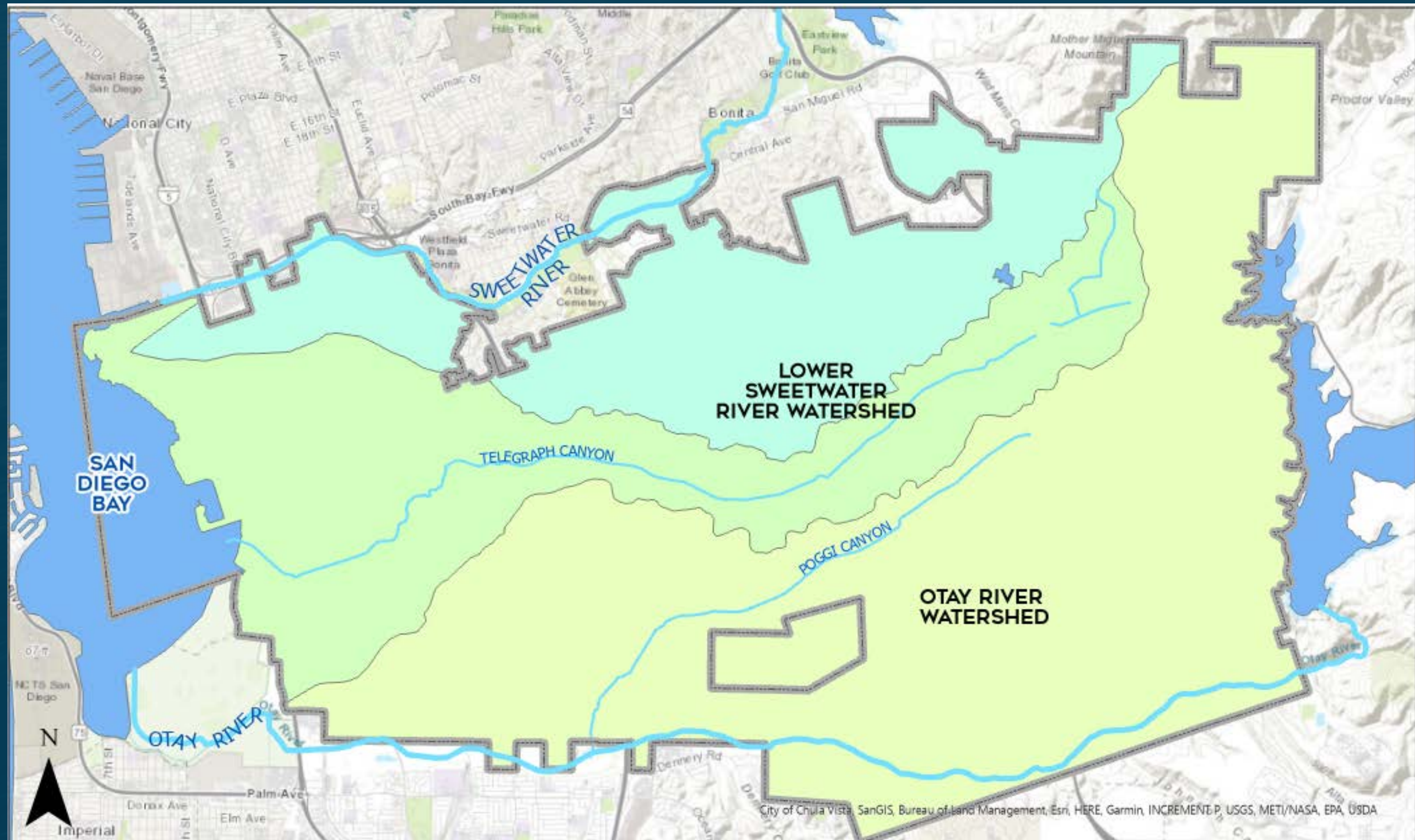
Residents, Businesses, Developers

Storm Water vs Sanitary Sewer



COURTESY OF: AZSTORM.ORG

We all live in a watershed



THE BAY BEGINS AT YOUR FRONT DOOR

8



Pool
Yard & Garden
Home Improvement
Pet Waste
Trash & Litter
Automotive
Cooking Oil & Grease

POOLS, SPAS, & WATER FEATURES

Best Management Practices (BMPs)

CAPTURE

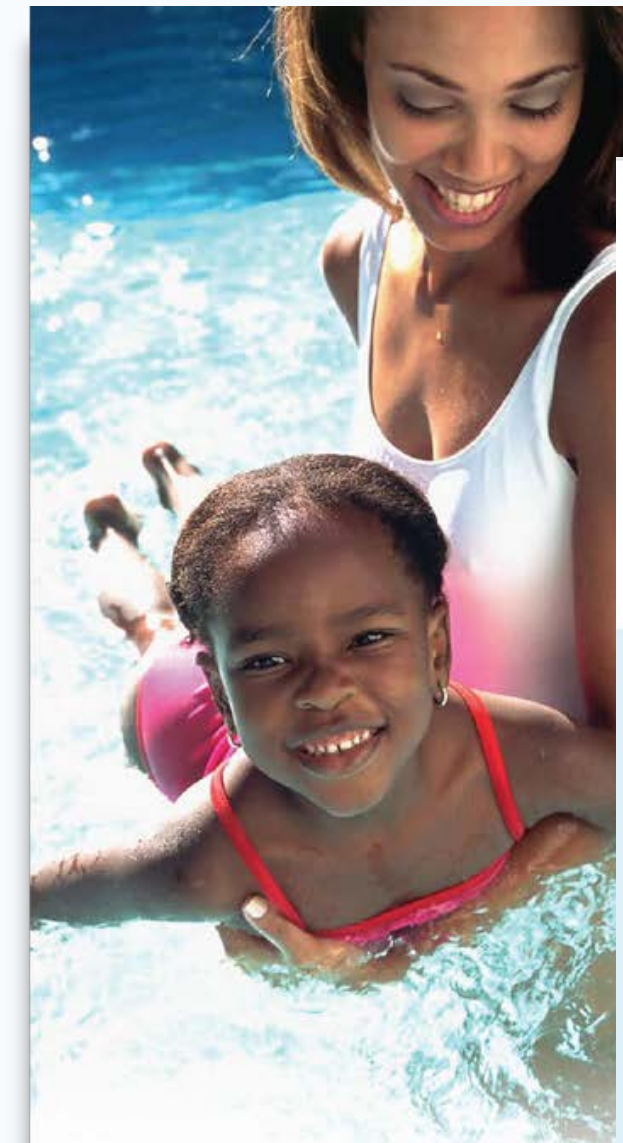
Backwash from pool filter cleaning
Debris, sediment, & algae

DRAIN POOL WATER BY:

Discharging to sanitary sewer or slowly drain into landscape or pervious area without causing erosion

OR

Meeting pool water criteria to be discharged to the storm drain system



Maintenance of Pools, Spas & Water Features

Your Community. Your Environment. Your Choice.
Help keep Chula Vista clean.



Storm Water Management Section
Department of Public Works
1800 Maxwell Road, Chula Vista, CA 91911
www.chulavistaca.gov/clean

Pool and spa chemicals may be harmful to our environment!

The water you drain from your swimming pool, spa or other water features such as fountains and koi ponds, may be heavily laced with chemicals such as chlorine, copper or bromine.

These chemicals are designed to keep the water in swimming pools clean and clear. Alternatively, the same chemicals, when released into the storm drain system, may kill important parts of the natural aquatic environment in our local waterways.



Make better choices... with the environment in mind.

Drain swimming pool, spa, reflective pool, pond, or fountain water by either:

- ~ Flowing water to the sanitary sewer system or
- ~ Slowly draining the water onto a landscaped or pervious area to infiltrate or evaporate, without resulting in erosion or runoff to the storm drain system or adjacent property.

Water can be only be drained to the storm drain system if pollution prevention measures are implemented. The water must:

- ~ Be free of chemicals, and chlorine must test at less than one part per million (ppm)
- ~ Be free of vegetation or debris
- ~ Have a pH of 7-8
- ~ Be free of color and contain no algae
- ~ Flow at a rate that will not cause downstream flooding or erosion

The surface flow path must be cleared of trash, debris, and sediment before the water is drained to the storm drain.

Other maintenance tips:

- ~ Prior to discharging large quantities of water to the sanitary sewer system, contact the City's Wastewater Engineering Section at (619) 691-5021.
- ~ It's best to clean your pool's filter over a lawn, planter box, or another surface that absorbs liquids. Collect pool debris on a filter cloth and then discard the cloth in the trash.
- ~ Chlorine naturally dissipates over time and, if you do not add chemicals to the water for 5 to 7 days, your pool will be free of chlorine, and ready to drain to the storm drain.
- ~ Drain backwash discharge into the sanitary sewer system through a legal sewer connection.
- ~ It is illegal to dump discharge from backwashing or acid cleaning into the storm drain system.
- ~ Saline swimming pool water is prohibited from entering the City's storm drain system.

Environmentally-Friendly
**Yard & Garden
Maintenance**



Your Community. Your Environment. Your Choice.
Help keep Chula Vista clean.



Storm Water Management Section
Department of Public Works
1800 Maxwell Road, Chula Vista, CA 91911
www.chulavista.gov/clean

Yard & garden maintenance may be harmful to our environment!

- FACT:** Household chemicals, paint, pesticides, fertilizers, and trash are just a few of the pollutants that home and garden maintenance contribute to storm water pollution.
- FACT:** When it rains, or when over-watering occurs, excess pesticides and fertilizers from your lawn and garden are washed into storm drains and into local waterways. These waterways may flow through your neighborhood park, canyon, or walking trails, and ultimately into San Diego Bay.
- FACT:** Home improvement and maintenance projects often require significant cleanup of waste and chemicals. Washing waste or chemicals such as paint or solvent into the street, alley, or sidewalk will send these pollutants into the storm drain system.
- FACT:** When trash or debris is not stored in covered trash cans, it can easily end up littering our waterways.
- FACT:** Storm water pollution from yards, garden and litter sources can harm aquatic life and have an impact on us all.
- FACT:** You can prevent harmful chemicals, pesticides, fertilizers, and trash from entering the storm drain system by making better choices in your day-to-day activities.

Make better choices...
with the environment in mind.

- ☞ When applying pesticides and fertilizers, use only the recommended amounts provided on the package and be careful not to over-apply.
- ☞ Pesticides and fertilizers should not be applied if rain is in the forecast. These products will simply wash away and pollute our waterways.
- ☞ If you use a water-based paint, remove excess paint from paintbrushes, pans, sprayers and other equipment with a rag before washing in a sink connected to the sewer. Recycle used paint when possible. Empty, dried paint cans should be placed in the recycle bin. Dried paint can be removed from the can and disposed of into the trash bin. For any questions regarding liquid waste paint disposal, please call the City's Environmental Services Section at (619)691-5122.
- ☞ Check your irrigation system regularly to prevent and eliminate irrigation runoff. Irrigation runoff should not enter the storm drain system.
- ☞ Use effective natural alternatives to pesticides. Find more information at www.projectcleanwater.org.
- ☞ To prevent leaves and garden clippings from entering the storm drain system, sweep them into a pile and put them into your Green Waste bin.
- ☞ Clean your sidewalks and driveways using dry cleaning methods such as sweeping with a broom or using a shop vacuum instead of using a hose.
- ☞ Prevent sediment or loose dirt from entering the storm drain system by planting vegetation on slopes that are exposed, and by maintaining your landscaped areas.

YARD & GARDEN MAINTENANCE

Best Management Practices (BMPs)

MINIMIZE OVER-IRRIGATION

Adjust watering times & sprinkler heads

Switch to a drip system

Illicit discharge if enters City gutters & streets

MINIMIZE POLLUTANTS

Use fertilizers & pesticides sparingly; apply during dry weather

Collect leaves, debris, and sediment

Use dry methods to clean surfaces

HOME IMPROVEMENT

Best Management Practices (BMPs)

PREVENT POLLUTION BY:

Cleaning with dry methods

Absorbing spills with kitty litter or rags

Collecting /capturing water from power washing

PROPER DISPOSAL

Properly collecting and disposing of construction debris such as saw dust, dry wall dust, and cement

Wash water from cleaning goes to sanitary sewer
(paint brushes, dry wall mud, plaster, etc.)

Paint & other hazardous or toxic chemicals to HHW Facility



Environment-Friendly
Home Improvement & Maintenance

Home improvement & maintenance may be harmful to our environment!

If home improvement materials are washed down the street into a storm drain, they not only stain the gutters and street but also add many harmful chemicals and sediments to our water bodies. Additionally, many building materials can dry, harden, clogging storm drain pipes.

Too much sediment or dirt in our waterways can choke aquatic life by creating murky conditions; it also fills in and disables natural drainage areas.

Yard clippings blown or swept into a storm drain can damage aquatic environments by adding too much vegetation to the water which then removes oxygen and suffocates other aquatic life.

Make better choices...
with the environment in mind.

Disposal of Paint and Building Materials
Never rinse paint brushes out in the street or in any area that might flow to the street or into a storm drain. If you use a water-based paint, wash all paintbrushes, pans, sprayers and other equipment in a sink connected to the sewer. Recycle paint cans if possible. Empty, dried paint cans should be placed in the recycle bin. Dried paint can be removed from the paint can and disposed of into the trash bin. For any questions regarding liquid waste paint disposal, please call the City's Environmental Services Section at (619)691-5122.

If you spill liquid building materials or other hazardous materials use towels, absorbents or kitty litter immediately to prevent them from flowing into the street. Properly dispose all hazardous waste in the trash.

Materials and equipment that require water with application and cleaning such as grout, gypsum compound, dry wall mud, plaster, stucco, or concrete cannot be rinsed down a street or into a storm drain. Use a mop and bucket to clean these areas. Allow left-over materials to dry completely, then dispose of them in the trash.

Sediment/Loose Dirt
You can help prevent sediment or loose dirt from entering the storm drain system by planting vegetation on slopes, and by properly maintaining your landscaped areas. Roots from plants bind loose soil and prevent erosion. If loose dirt is left on sidewalks or streets after a project, dispose of it in your yard. For large projects, contact a hauling company to remove dirt from the site.

Cleaning Sidewalks, Driveways and Other Surfaces
If you must prepare your home exterior for painting, or if you need to clean your sidewalks and driveways by pressure washing, hire a company that specializes in recovering wash water. Make sure to clean up fluid spills with a rag, kitty litter or other absorbents, rather than flushing the spill down the street and into the storm drain system.

Remember, it is illegal to allow building materials, or wash water from the cleaning of building materials, to enter the storm drain system.

Your Community. Your Environment. Your Choice.
Help keep Chula Vista clean.

 **CITY OF CHULA VISTA**

Storm Water Management Section
Department of Public Works
1800 Maxwell Road, Chula Vista, CA 91911
www.chulavistaca.gov/clean

Proper Disposal of Pet Waste



Your Community. Your Environment. Your Choice.
Help keep Chula Vista clean.



Storm Water Management Section
Department of Public Works
1800 Maxwell Road, Chula Vista, CA 91911
www.chulavistaca.gov/clean

The Scoop on Poop:

- FACT:** Picking up after your pet is not only the polite and neighborly thing to do, but it is the law in Chula Vista (CVMC 6.24.050). Being a responsible pet owner means always picking up after your pet, no matter where you are.
- FACT:** Pet waste that is washed or discarded into the storm drain system will contaminate local waterways and San Diego Bay with bacteria that are harmful to the environment and to humans.
- FACT:** Contrary to some beliefs, pet waste is not a good fertilizer for the environment. Even pet waste in your yard can be washed into the storm drain as a result of over-watering or heavy rainfall.

Make better choices... with the environment in mind.

- When walking your pet, always remember to carry a pooper-scooper and a plastic bag to pick up your pet's waste.
- Dispose of pet waste in a garbage can or flush it down the toilet. Pet waste should never be disposed of in a storm drain or waterway.
- Use plastic pet waste bags, available at many City of Chula Vista parks and recreational areas. In addition, many homeowners associations (HOAs) provide pet waste bags, and have posted signs to encourage proper pet waste disposal.
- Don't forget to pick up after your outdoor cat. Place cat waste and litter in a plastic bag before disposing it in the trash.

Be a responsible pet owner
by helping us keep Chula Vista clean!



PET WASTE

Best Management Practices (BMPs)

PICK IT UP

DISPOSE INTO TRASH

DO NOT WASH AWAY

NOT FERTILIZER

TRASH & LITTER

Best Management Practices (BMPs)



COOKING OIL & GREASE

Best Management Practices (BMPs)



COURTESY OF: BGGREENSOURCE.ORG

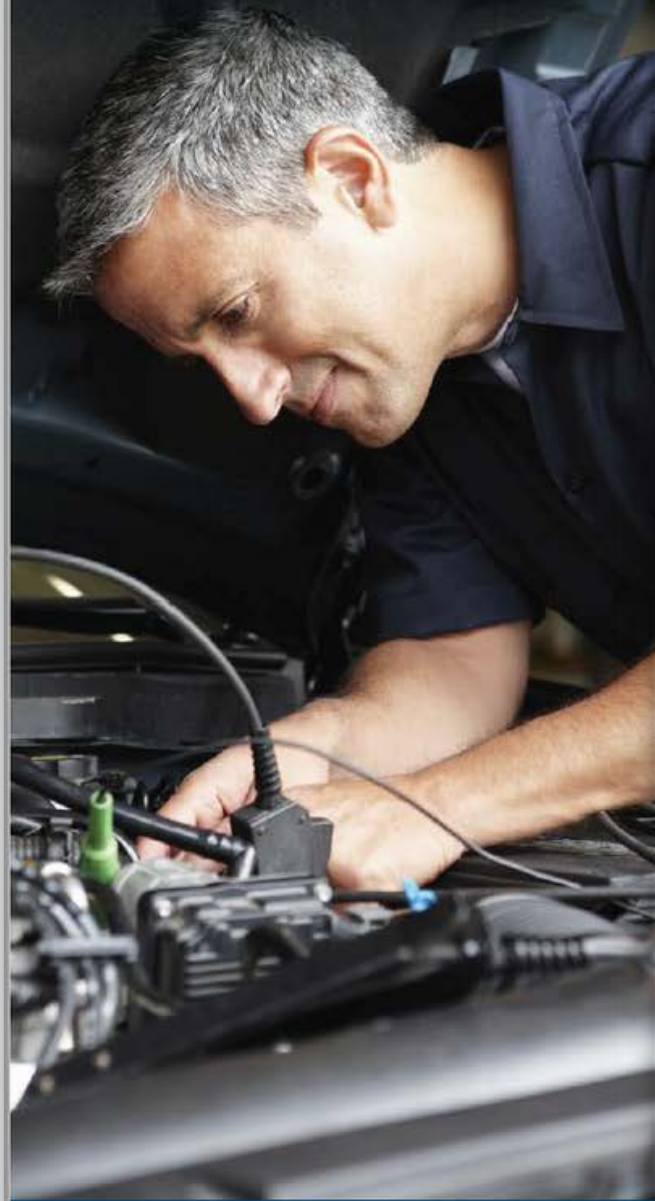
SCRAPE FATS, OILS, GREASE INTO TRASH

COLLECT GREASE IN A SEALED CONTAINER
AND PUT IN TRASH

BRING LARGE AMOUNTS OF USED COOKING
OIL TO THE HOUSEHOLD HAZARDOUS
WASTE FACILITY FREE OF CHARGE



Do-It-Yourself Automobile Maintenance



Your Community. Your Environment. Your Choice.
Help keep Chula Vista clean.



Storm Water Management Section
Department of Public Works
1800 Maxwell Road, Chula Vista, CA 91911
www.chulavistaca.gov/clean

Do-it-yourself automobile maintenance may be harmful to our environment!

Oil, antifreeze, transmission fluid, brake and power-steering fluids, and fuels are just a few of the pollutants that vehicles contribute to storm water pollution. If not properly maintained, cars leak fluids onto our streets, parking lots and driveways.

When it rains, these fluids are carried to storm drains and to the nearest waterways that may flow along your neighborhood walking trails and through your community parks, canyons, creeks, golf courses, lakes and rivers. Ultimately, it all drains into San Diego Bay.

Storm water pollution from automobile sources can harm aquatic life, and have an impact on us all. You can prevent these fluids and other pollutants from entering the storm drain system by making better choices when maintaining your vehicles.



Make better choices... with the environment in mind.

- ◆ Make sure to collect any unwanted oil and dispose of it properly. Auto parts stores throughout Chula Vista offer free recycling services for used oil and oil filters.
- ◆ Clean up spills quickly with rags or other absorbent materials like kitty litter. If you have a leaking car, place a drip pan, a piece of cardboard, or a carpet remnant under the leak before you take your car in for repairs.
- ◆ Wash your car on a lawn or unpaved surface and use non-toxic or biodegradable cleaning products. Dispose of leftover water in a toilet, sink or in your garden—not in the street or in a storm drain.
- ◆ We recommend washing your vehicles at commercial car washes that recycle water, and using repair shops that implement environmentally-sound practices.

Remember, it's illegal to dump unwanted fluids in the grass, street, or directly into the storm drain system.

AUTOMOBILIE MAINTENANCE

Best Management Practices (BMPs)

COLLECT & CLEAN SPILLS USING
ABSORBENT OR RAGS

USE COMMERCIAL CAR WASHES OR
WASH ON LAWN/UNPAVED
SURFACE

PROPERLY DISPOSE OF AUTO FLUIDS

CERTIFIED COLLECTION CENTERS



52 WAYS TO H₂O

I PLEDGE TO TAKE 52 ACTIONS TO PROTECT MY WATER

| | | | |
|--|--|--|---|
| 01 Go to ProjectCleanWater.org and sign up for the Project Clean Water Pledge | 02 Share the Project Clean Water Pledge on social media | 03 Tell a friend or family member about the Project Clean Water Pledge | 04 Visit ProjectCleanWater.org and use "Find My Watershed" to discover which watershed you live in |
| 05 Check with your local government agency for rebate programs | 06 Visit a local creek or river and enjoy being out in nature. Take a photo and share with us | 07 Participate in a beach, river, creek or bay clean up | 08 Visit a tidepool and appreciate the wildlife. Take a photo and share with us |
| 09 Write a poem, draw a picture, write a song or make a craft project that features water as a theme | 10 Calculate how much water you should drink per day | 11 Track how much water your household uses: www.watercalculator.org | 12 Visit one of our non-profit partners website and find a way you can volunteer or help |
| 13 Take the Project Clean Water knowledge quiz | 14 Read up on stormwater pollution and how it is affecting San Diego | 15 Read up on native, low-water use plants | 16 Learn about rain barrels |
| 17 Read this list of common pollutants. You might be surprised! LINK | 18 Find your nearest recycling center or drop-off sites for safe disposal of hazardous materials | 19 Did you know San Diego is a Mediterranean climate? Use this interactive tool to explore plants well-suited for this climate: www.watersmartslandscaping.org | 20 Use reusable bags next time you go grocery shopping |
| 21 Shop local | 22 Decrease the amount of your showers this week by 5 minutes | 23 If you haven't already, invest in a reusable water bottle | 24 If you don't already have some, buy reusable straws and pledge to not use plastic straws anymore |
| 25 As often as you can, walk or ride your bike instead of driving | 26 Try only run your dishwasher and washing machine when you have a full load | 27 Spread fresh leaf or wood chip mulch throughout your garden/yard | 28 Clean out your gutters |
| 29 Use our Report Pollution tool if you see anything other than water from a rain event in the curb, gutter, alley or street | 30 Check your sprinklers for broken sections | 31 Reduce your watering time or adjust your sprinklers' water cycle | 32 Take your car to a certified car wash |
| 33 Check your car for leaks | 34 Switch to organic fertilizer and cut down on how much you use | 35 Reduce pesticides and herbicides | 36 Pick up trash and litter and place in trash/recycling bin |
| 37 On your trash pick up day, make sure your cans and dumpsters are not overflowing | 38 Sweep your driveway and place items in the trash | 39 Rake the yard and place in trash bin | 40 Visit your nearest waterway (beach, creek, river, bay) and pick up any trash you see |
| 41 Grab a trash bag and go for a hike, pick up trash you see along the way | 42 Cut down on single use plastic | 43 Capture cooking oil in a sealable container before placing in the trash | 44 Take a walk around your neighborhood and pick up trash, weeds and dead plants |
| 45 Use our Trash Collector Counter on your next cleanup | 46 Replace part of your lawn with native, drought resistant plants | 47 Take a walk in the rain | 48 Plant a native, low-water use plant |
| 49 Redirect your downspout to vegetated areas on your property | 50 Create a compost bin | 51 While you wait for hot water to come through your sink or shower, collect the water in a bucket or watering can for later use - water plants, run your garbage disposer or pour into the toilet bowl to flush | 52 Renew your pledge to protect our waterways |



PLEDGE TO TAKE SMALL WEEKLY ACTIONS TO HELP PROTECT OUR WATERWAYS

@CLEANWATERSD

@PROJECTCLEANWATERSD

Pledge to take one action each week to protect your waterways. projectcleanwater.org/52

Youth friendly



WWW.PROJECTCLEANWATER.ORG



WWW.CHULAVISTACA.GOV/STORMWATER
WWW.CHULAVISTACA.GOV/CLEAN

Contact Information



HOTLINE: (619) 397-6000
Public Works Dispatch



STORMWATER@CHULAVISTACA.GOV

Thank you!

Questions?



SUMMER SUSTAINABILITY SERIES

- August 5th, 4 PM - SB1383; How Will the New Organic Waste Law Affect Chula Vista
- August 19th, 12 PM - Energy Benchmarking
- September 2nd, 4 PM - Recycling 101- Are You Wish Cycling or Really Recycling?
- September 16th, 4 PM - Chula Vista's Zero Waste Plan
- Recorded past webinars

Registration and recordings at www.chulavistaca.gov/clean