



# Eucalyptus Park Renovations

Workshop #1 Presentation

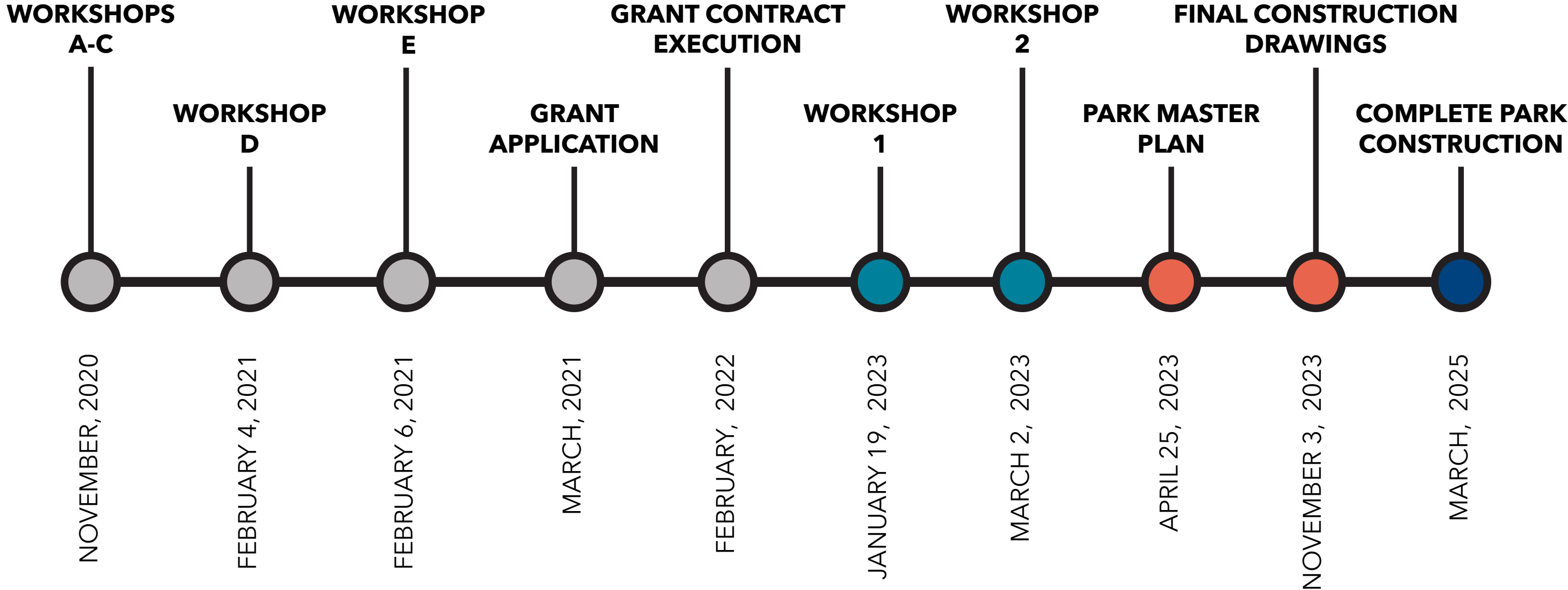
*January 19, 2022*



# WORKSHOP OUTLINE

- 1 Presentation**
- 2 Question & Answer Session**
- 3 Community Review Of Project Exhibits**
- 4 Completion Of Project Surveys**

# PROJECT TIMELINE



# HISTORICAL HIGHLIGHTS

Eucalyptus Park exists on lands historically occupied by the Kumeyaay people

Opened in 1926 as Chula Vista's second city park and one of its oldest remaining parks.

...  
Eucalyptus trees planted by Frank Kimball.

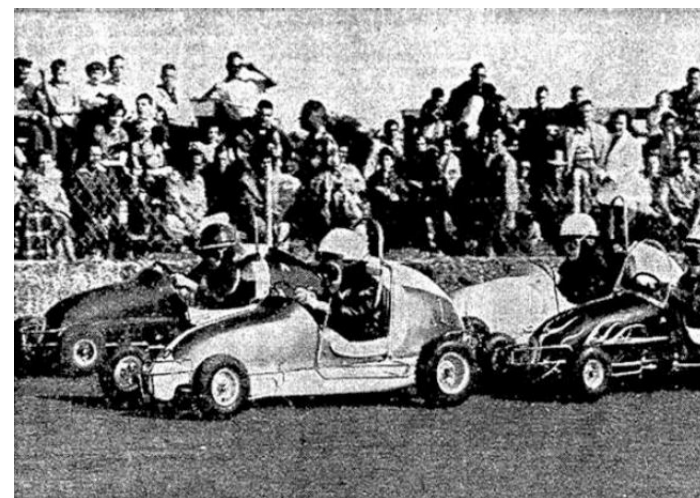
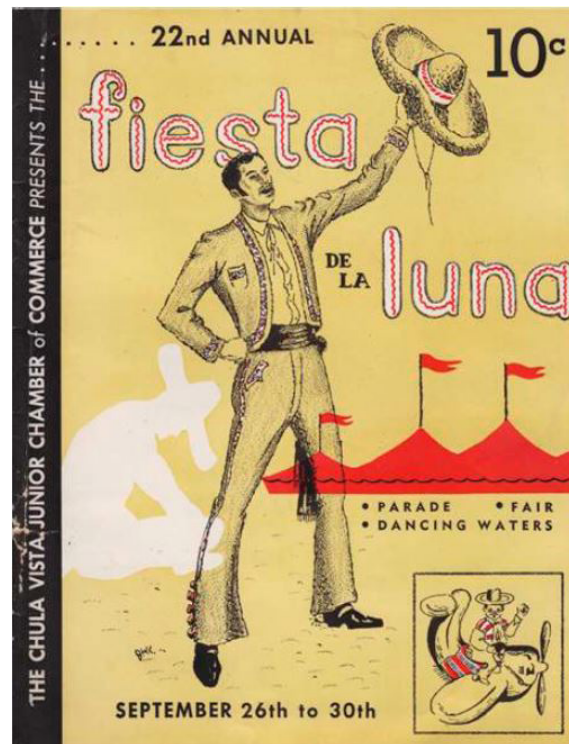
...  
Originally an athletic field, and was called Athletic Park. When used by the Fiesta de la Luna, the park was referred to as Rancho de la Nacion Park.

...  
American Legion Hall was used as an emergency hospital during World War II and the park was known at that time as Legion Park.

...  
In 1964 the F Street Kindergarten building was moved adjacent to the park and became the YMCA building seen there today.

...  
Park was used for little-league games, a model airplane club, circus, horse-riding clubs, and quarter-midget racing.

...  
Used by the Lawn Bowling Association. The Association office building is now used as a park maintenance building.



# LEGEND


## Assets

- 1 High use & recreational value
- 2 Expansive park views
- 3 Mature Eucalyptus trees providing shade and Monarch butterfly habitat

## Challenges

- 1 Channelization, erosion & pooling of stormwater
- 2 Lack of ADA access
- 3 Path fragmentation
- 4 Lack of vegetation, drainage, erosion of barren & exposed slopes
- 5 Outdated shade shelters & furnishings
- 6 Lack of safety, visibility & lighting around encampments
- 7 Tile safety surfacing in disrepair
- 8 Outdated structure
- 9 Poorly defined vehicular entry/exit, poor pedestrian access
- 10 Limited/inconsistent lighting
- 11 Feature in disrepair
- 12 Unsightly fencing at park perimeter

 Surface stormwater flow

 Path system

 Existing structures





Concrete Stormwater Channel



Horseshoe Pits



Drainage along slopes



Eucalyptus Groves



Dog Park



Lawn



Slope access to fields



Volleyball Court



Entry



Playground

# PROJECT GRANT FUNDING HIGHLIGHTS

- 1** Grant application in March 2021. Grant contract execution in February 2022
- 2** Approximately \$5 million dollar grant award for construction of the park
- 3** Construction of park improvements by March of 2025
- 4** Grant required park improvements
  - Perimeter Walking Path & Fitness Equipment
  - Dog Park Improvements
  - Perimeter Stormwater Channel Improvements
  - Bike Skills Course
  - Skate / Scooter Plaza
  - Splash Pad
  - Lit, Multi-Purpose Artificial Turf Field
  - Fencing, Drinking Fountain & Lighting Improvements
  - Four Lit Pickleball Courts
  - Parking Lot Improvements
  - Playground Equipment
  - ADA pathway connecting to Menzel Field

# LEGEND

## Amenity Enhancement

- A** Stormwater Channel Improvements
- B** Parking Improvements (Final Location TBD)
- C** Dog Park Improvements

## Accessibility

- D** Connection To Menzel Field
- E** Perimeter Walking Path & Fitness Equipment

## Active Play

- F** Playground Equipment
- G** Splash Pad
- H** Skate/Scooter plaza
- I** Bike Skills Playground
- J** Multi-Purpose Lit Artificial Turf Field
- K** Lit Pickleball Courts

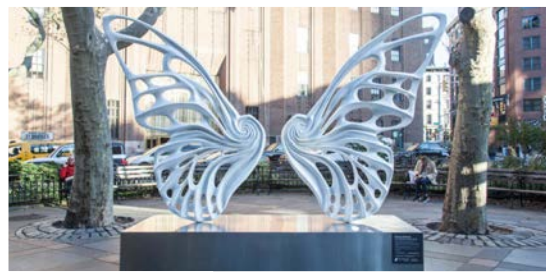




BUTTERFLY THEME

EUCALYPTUS THEME

HISPANIC CULTURE THEME





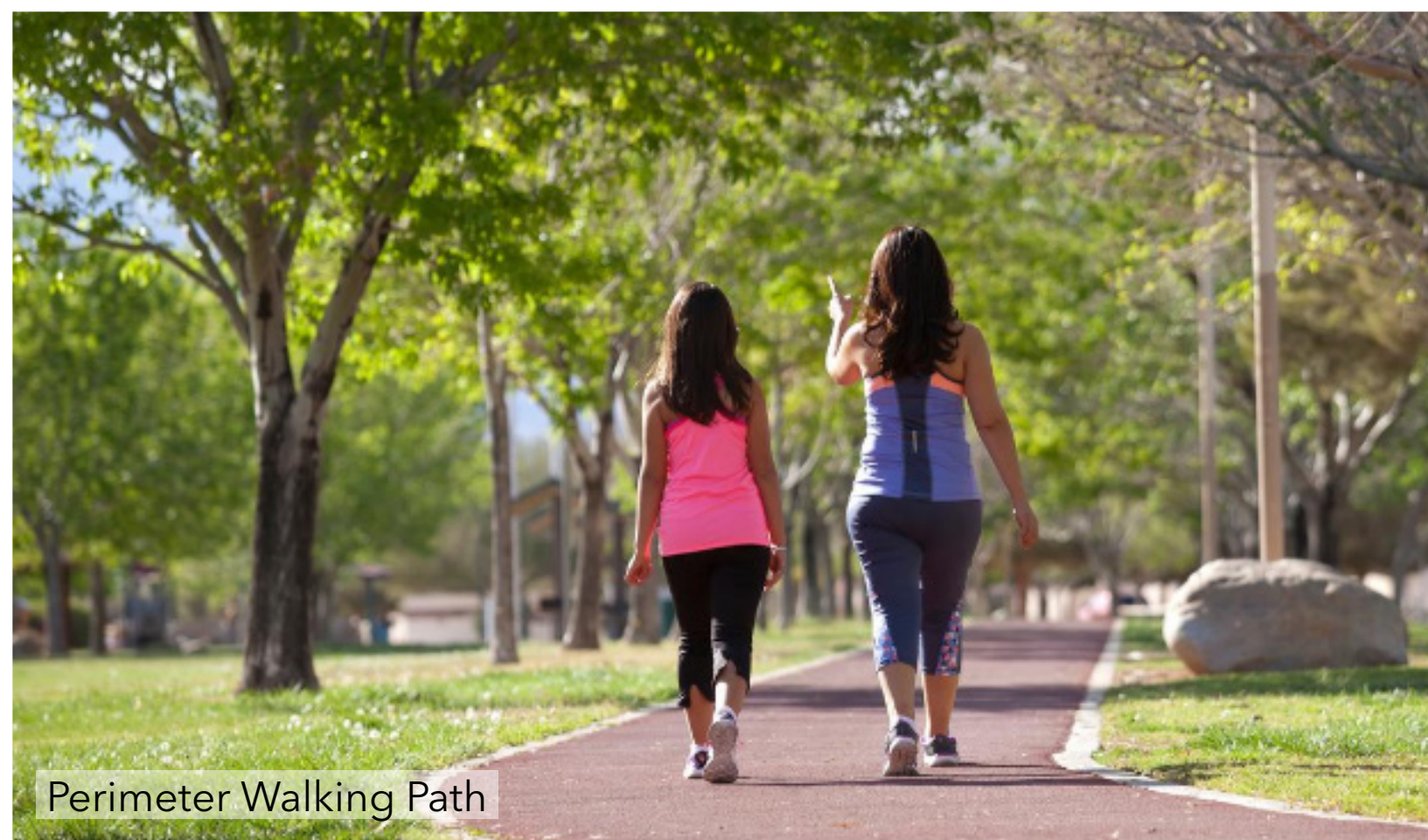
Pickleball Courts



Artificial Turf Field



Outdoor Exercise Equipment



Perimeter Walking Path



Net Climbing Structure



Climbing Structure



Learning Walls



Musical Features



Rockers



Stationary Spinners



Climber Carousel



Monkey Bars



Zipline



Swings



Spinner



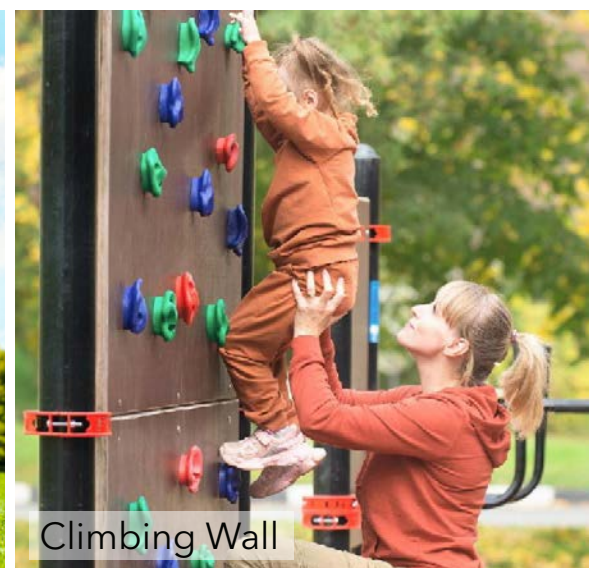
Refuge Feature



Swing Steppers

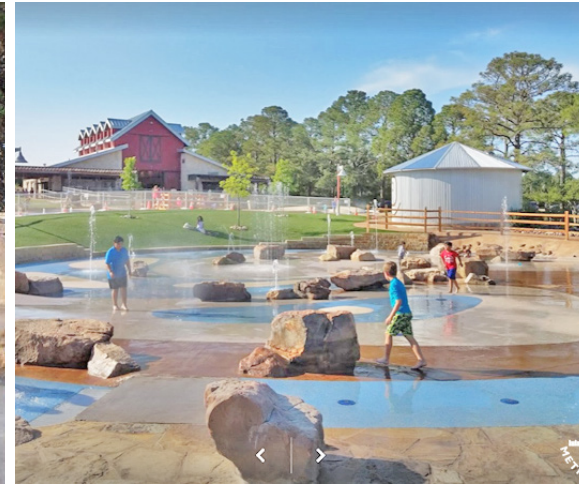


Swings



Climbing Wall

## Natural Style



## Colorful Style



## Urban Plaza Style



## Dog Park Toys



## Dog Park Surfacing Improvements



Decomposed Granite



Bark Mulch



Artificial Turf



Real Turf

## Dog Park Amenities



Picnic Tables



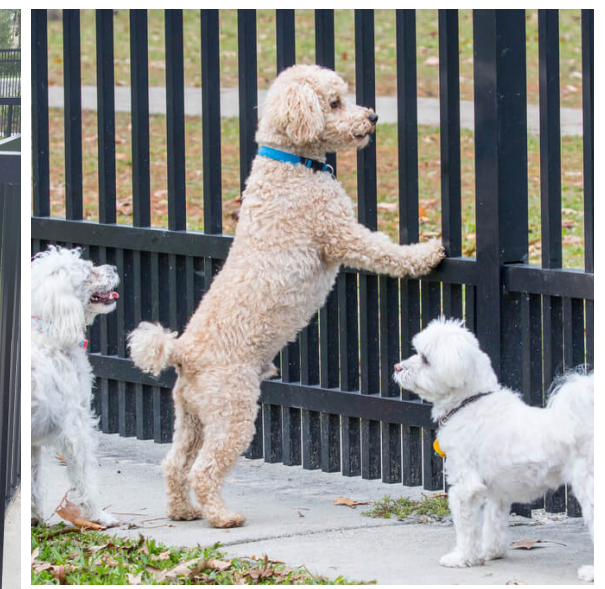
Shade & Benches



Dog Fountains



Improved Entry Area



Improved Fencing



Bowl



Brick Bank



Custom "Landmark" Feature



Custom Rails



Gap



Grind Box



Halfpipe



Kicker with Rail & A-Frame



Ledges



Manual Pad & Ledge



Quarterpipe



Rails



Rails, Ledges & Stair Combo



Stair Set



General Layout



A-Frames



Drops



Flow Lines



Hammocks



Jump Lines



Rock Slalom



Podium Box



Pump Track



Rollable Senders



Rollers



Skinny Ladders



Snake Ladders



Split Decisions



Teeter Totters



Bike Tunnels



# Eucalyptus Park Renovations

## Project Survey

To provide input on the Eucalyptus Park Renovations project, fill out this survey and return to the City or take the survey online at <https://www.chulavistaca.gov/departments/public-works/parks/locations-features-amenities-photos/eucalyptus-park>. Survey will close on **January 27th** so be sure to complete and return the survey by then!



**1** Please provide your contact information below to receive future project updates:

Name: \_\_\_\_\_

Email Address: \_\_\_\_\_

**2** How far from Eucalyptus Park do you live? (Choose one)

- 1 mile or less
- 1-3 miles
- More than 3 miles

**3** How do you travel to Eucalyptus Park? (Choose all that apply)

- Walking
- Biking
- Other (Please specify) \_\_\_\_\_
- Public Transit
- Driving

**4** How often do you visit Eucalyptus Park? (Choose one)

- Daily or almost daily
- Once per week
- A few times a month
- A few times a year
- Never

**5** What are the ages of the individuals in your household who visit the park? (Choose all that apply)

- 0-4
- 5-12
- 13-18
- 19-45
- 46-64
- 65+

**6** What are the top three amenities that you use in Eucalyptus Park? (Choose three of the options below)

- Dog Park
- Horseshoe Courts
- Tennis Courts
- Baseball Fields
- Picnic Tables & Shelters
- Playground
- Sand Volleyball Court
- Basketball Court
- Lawn Areas
- Eucalyptus Groves
- Other (Please specify) \_\_\_\_\_

**7** What are your top three concerns with the existing elements and design of Eucalyptus Park? (Choose three of the options below)

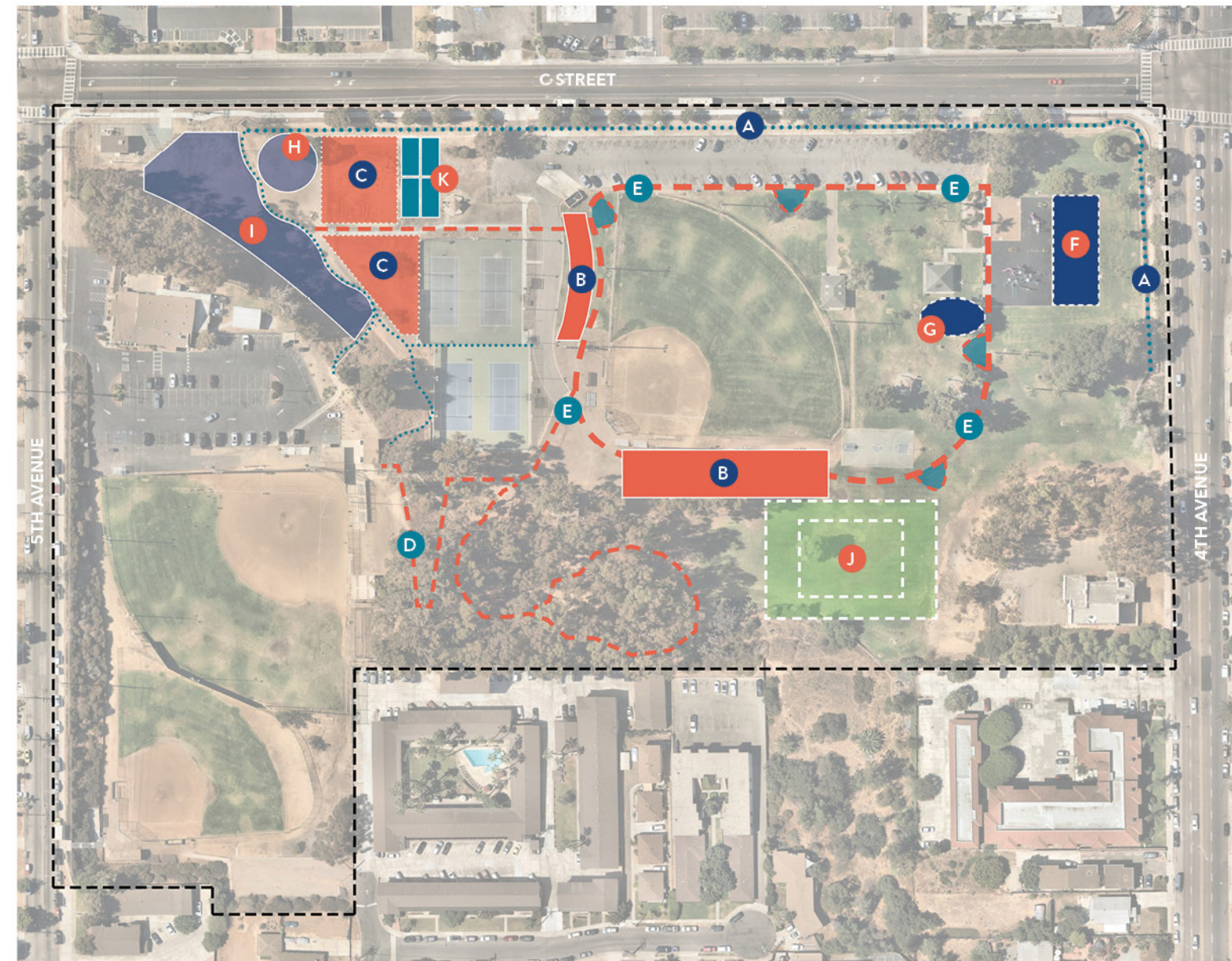
- Safety & Security In The Park
- Litter & Vandalism In The Park
- Insufficient Turf Area
- Surfacing in the Dog Park
- Insufficient Play Equipment
- Other (Please specify) \_\_\_\_\_

**8** Please describe your thoughts or concerns related to the existing park elements/issues indicated above:

\_\_\_\_\_

\_\_\_\_\_

\_\_\_\_\_



Eucalyptus Park Program Plan

### LEGEND

#### Amenity Enhancement

- A** Stormwater Channel Improvements
- B** Parking Improvements (Final Location TBD)
- C** Dog Park Improvements

#### Accessibility

- D** Connection To Menzel Field
- E** Perimeter Walking Path & Fitness Equipment

#### Active Play

- F** Playground Equipment
- G** Splash Pad
- H** Skate/Scooter plaza

- I** Bike Skills Course
- J** Multi-Purpose Lit Artificial Turf Field
- K** Lit Pickleball Courts

**19** Please provide any thoughts, comments or feedback you have on the program plan below:

\_\_\_\_\_

\_\_\_\_\_



# Thank You!

**Please fill out a survey before you leave or take the online survey at the project webpage below**

*<https://www.chulavistaca.gov/departments/public-works/parks/locations-features-amenities-photos/eucalyptus-park>*

ktua

