

# Chula Vista 2024 Climate Action Plan Update

## Background Information

### Past Climate Action Plans



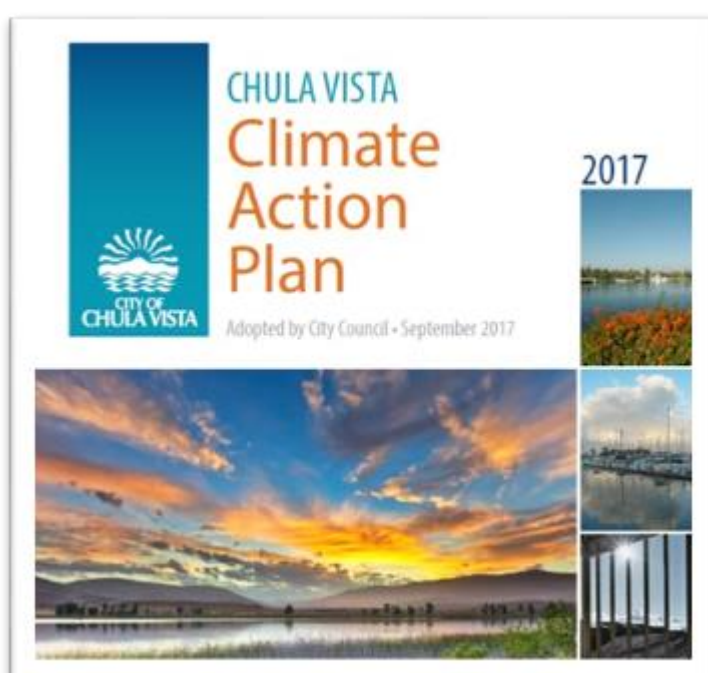
Climate Change Working Group Mitigation measures – 2008



CO2 Reduction Plan – 2000

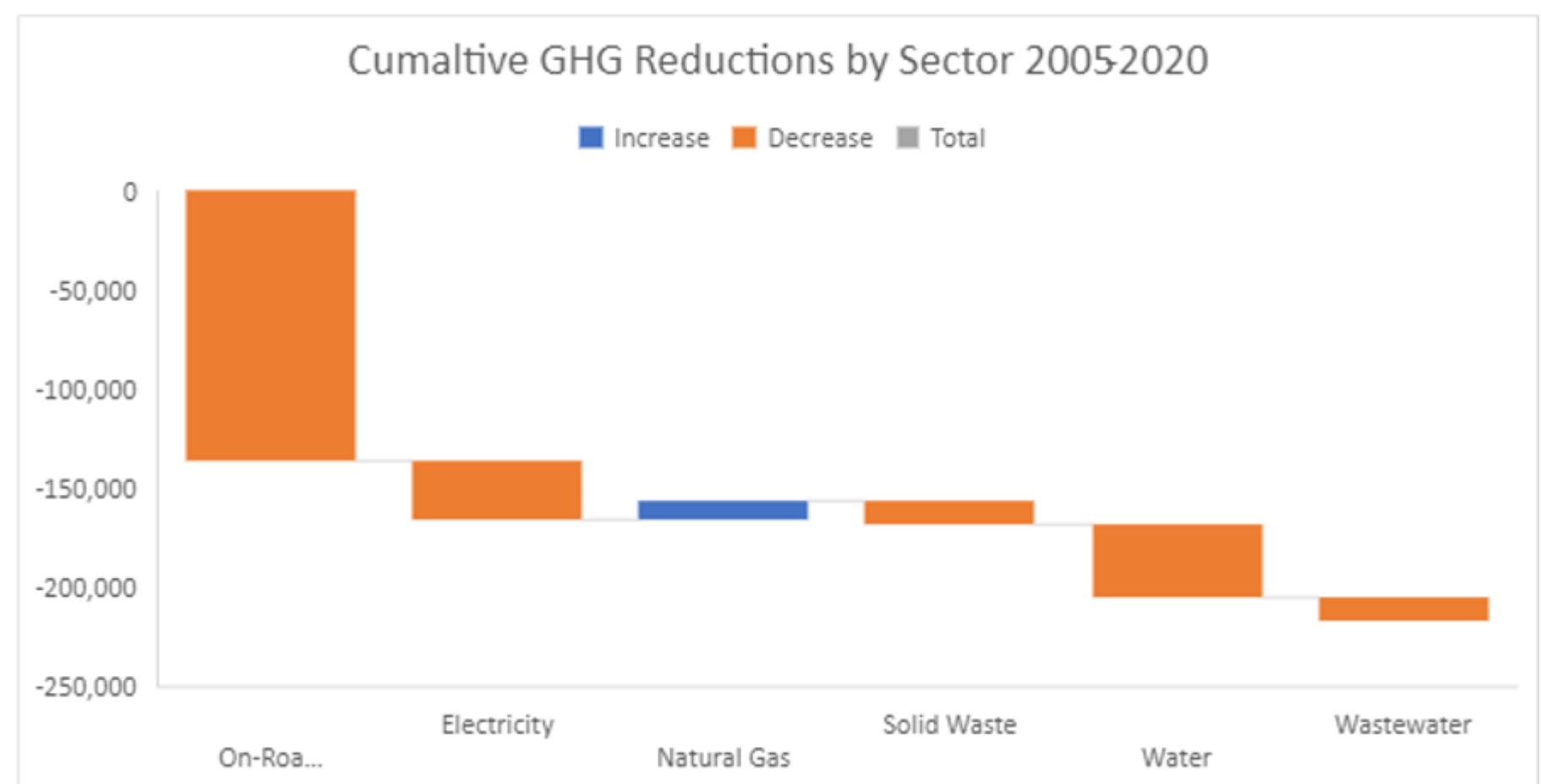
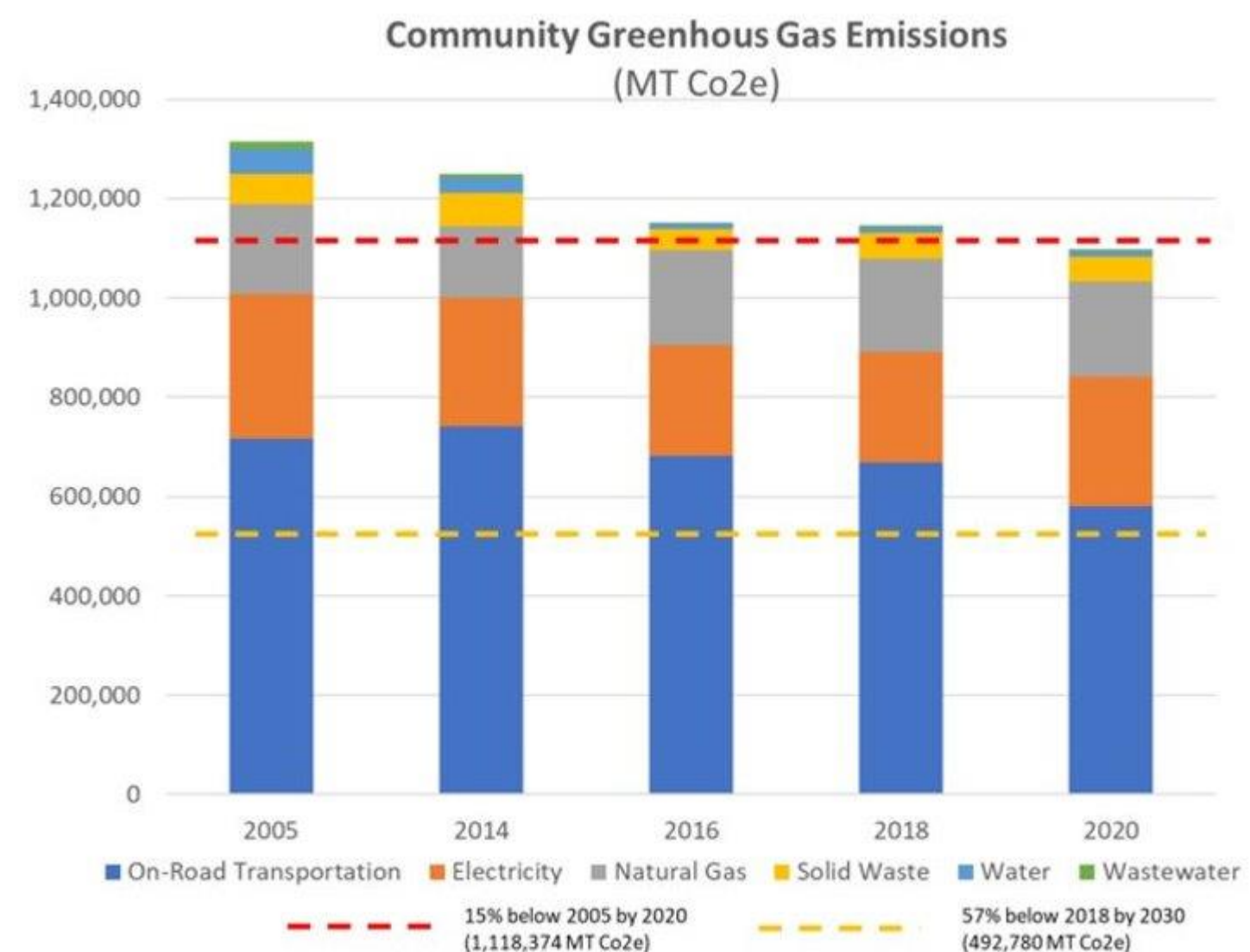


Climate Adaptation Strategies – 2011



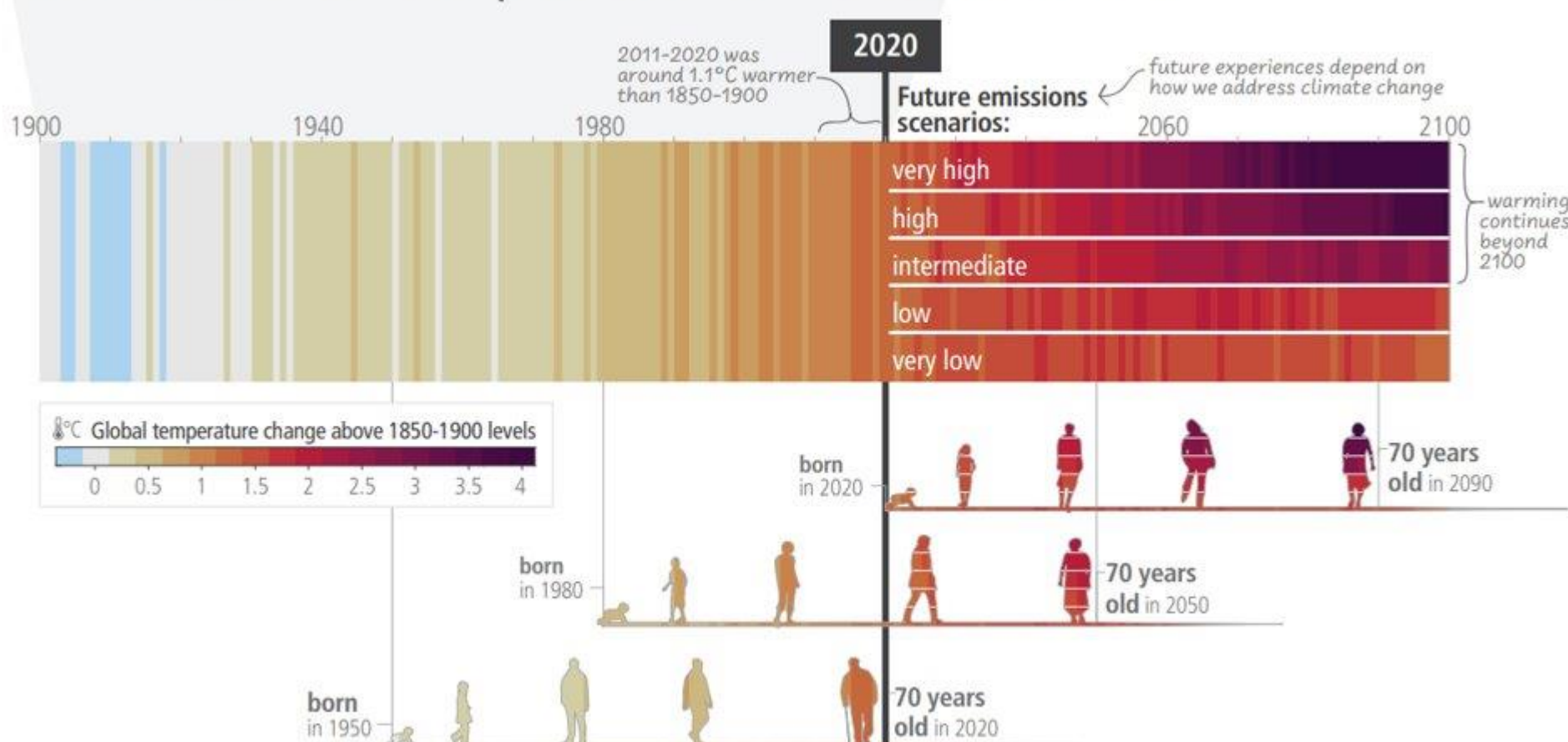
Climate Action Plan – 2017

### Greenhouse Gas Emissions



### Climate Impacts

c) The extent to which current and future generations will experience a hotter and different world depends on choices now and in the near term



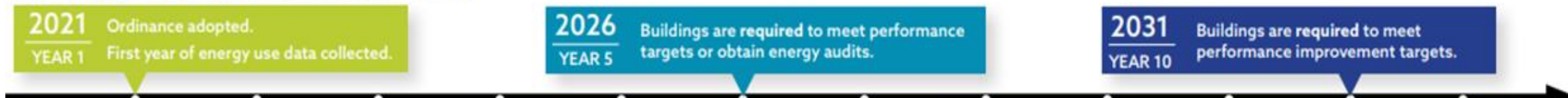
Source: IPCC 6th Report on Climate Change, [www.ipcc.ch/report/ar6/syr/figures/figure-spm-1](http://www.ipcc.ch/report/ar6/syr/figures/figure-spm-1)

### Past Climate Action Plan Implementation

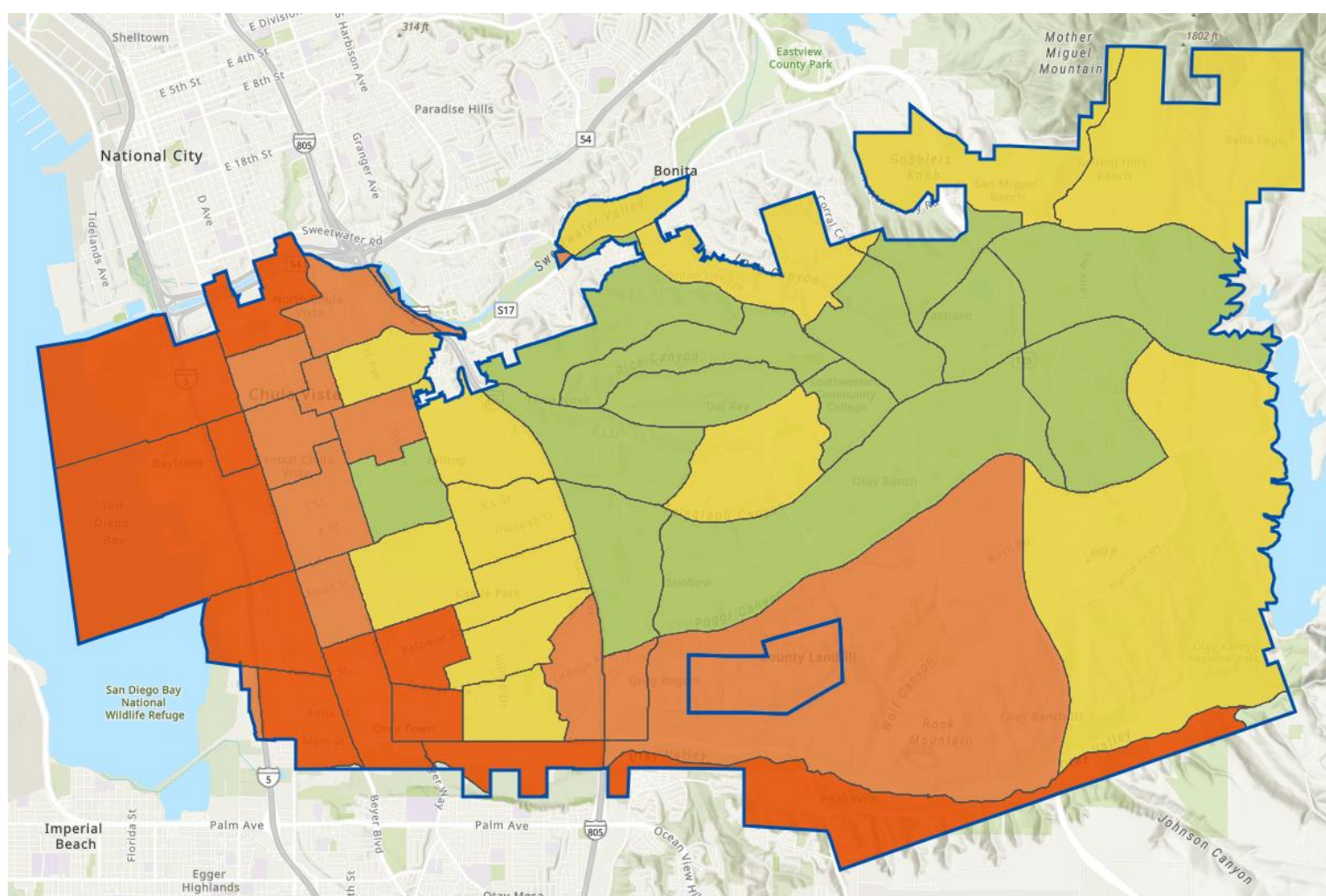
- Benchmarking ordinance adopted and being implemented

Energy Star Score	EUI Score	Minimum Improvement to be Exempt from Audit Requirement by 2026	Mandatory Minimum Improvement by 2031
0-45	80+	30%	15%
46-65	51-79	20%	10%
66-79	19-50	10%	None
80+	0-18	None	None

#### Mandatory Building Performance Timeline



- San Diego Community Power fully serving Chula Vista with cleaner electricity

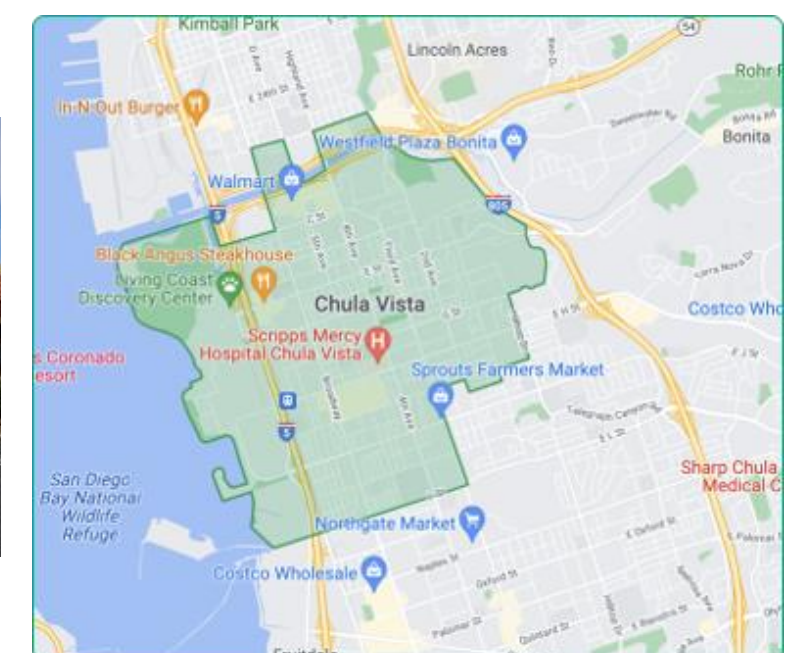


Source: Chula Vista Climate Equity Index map. Available at [www.chulavistaca.gov/cap](http://www.chulavistaca.gov/cap)



2022 POWER CONTENT LABEL				
San Diego Community Power				
<a href="https://sdcommunitypower.org/resources/key-documents/">https://sdcommunitypower.org/resources/key-documents/</a>				
Greenhouse Gas Emissions Intensity (lbs CO <sub>2</sub> e/MWh)	Energy Resources		2022 SDCP Power Mix	2022 SDCP Power Mix
	2022 SDCP PowerOn Power Mix	2022 CA Utility Average	Power Mix	Power Mix
375	0	422	54.2%	100.0%
			1.2%	0.0%
			2.6%	0.0%
			1.3%	0.0%
			25.5%	50.0%
			23.6%	50.0%
			0.0%	0.0%
			12.8%	0.0%
			0.0%	0.0%
			0.0%	0.0%
			33.1%	0.0%
			100.0%	100.0%
Percentage of Retail Sales Covered by Retired Unbundled RECs <sup>a</sup> :			0%	0%

- EV Community Shuttle



### Comments and Feedback

Please leave comments or feedback by scanning the QR code below for an online survey. These resources can also be found at [www.chulavistaca.gov/cap](http://www.chulavistaca.gov/cap)



Update Summary



Full Survey



Measure Survey