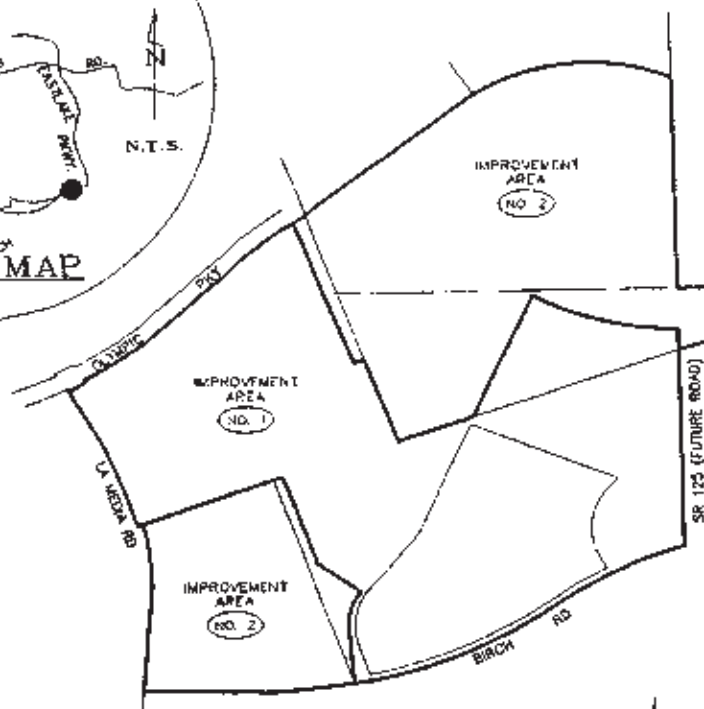
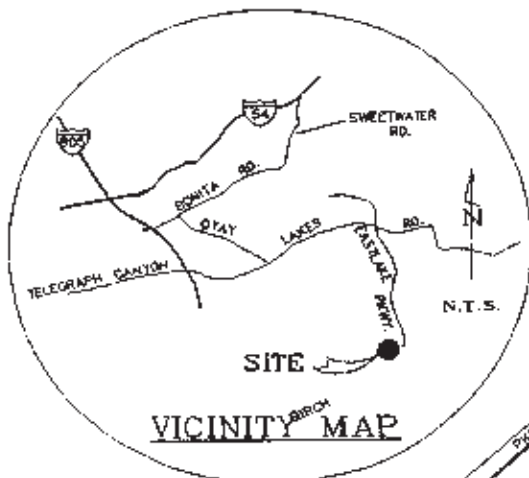


BOUNDARY MAP OF PROPOSED
COMMUNITY FACILITIES DISTRICT NO. 08M

CITY OF CHULA VISTA
COUNTY OF SAN DIEGO
STATE OF CALIFORNIA



FILED IN THE OFFICE OF THE CITY CLERK THIS 14th DAY OF September 2003

[Signature]
CITY CLERK
CITY OF CHULA VISTA

I HEREBY CERTIFY THAT THE WITHIN MAP SHOWING PROPOSED BOUNDARIES OF CITY OF CHULA VISTA COMMUNITY FACILITIES DISTRICT NO. 08M, CITY OF CHULA VISTA, COUNTY OF SAN DIEGO, STATE OF CALIFORNIA, WAS APPROVED BY THE CITY COUNCIL OF THE CITY OF CHULA VISTA, AT A REGULAR MEETING THEREOF, HELD ON THE 10th DAY OF August 2003, BY ITS RESOLUTION NO. 2003-0751574

[Signature]
CITY CLERK
CITY OF CHULA VISTA

FILED THIS 14th DAY OF September 2003 AT THE HOUR OF 11:15 O'CLOCK A.M. IN THE BOOK 200 PAGE 37 OF MAPS OF ASSESSMENT AND COMMUNITY FACILITIES DISTRICTS AND AS INSTRUMENT NO. 400-080-010 IN THE OFFICE OF THE COUNTY RECORDER IN THE COUNTY OF SAN DIEGO, STATE OF CALIFORNIA.

[Signature]
COUNTY RECORDER
COUNTY OF SAN DIEGO
STATE OF CALIFORNIA

THE LINES AND DIMENSIONS OF EACH LOT OR PARCEL SHOWN ON THIS DIAGRAM SHALL BE THOSE LINES AND DIMENSIONS AS SHOWN ON THE SAN DIEGO COUNTY ASSESSOR'S MAPS FOR THOSE PARCELS LISTED.

THE SAN DIEGO COUNTY ASSESSOR'S MAPS SHALL GOVERN FOR ALL DETAILS CONCERNING THE LINES AND DIMENSIONS OF SUCH LOTS OR PARCELS.

LEGEND
 PROPOSED BOUNDARY
 IMPROVEMENT AREA NUMBER

Conformed
Copy



MuniFinancial
 8870 Glagole Drive
 Suite 200
 Escondido, California 92026-3601
 Phone (909) 899-3800 Fax (909) 899-3480

0 100 200 300 400
 SCALE: 1" = 800'

7800011-0291-79 (07-030) JULY 2002

BK36 P639

2003-0751574