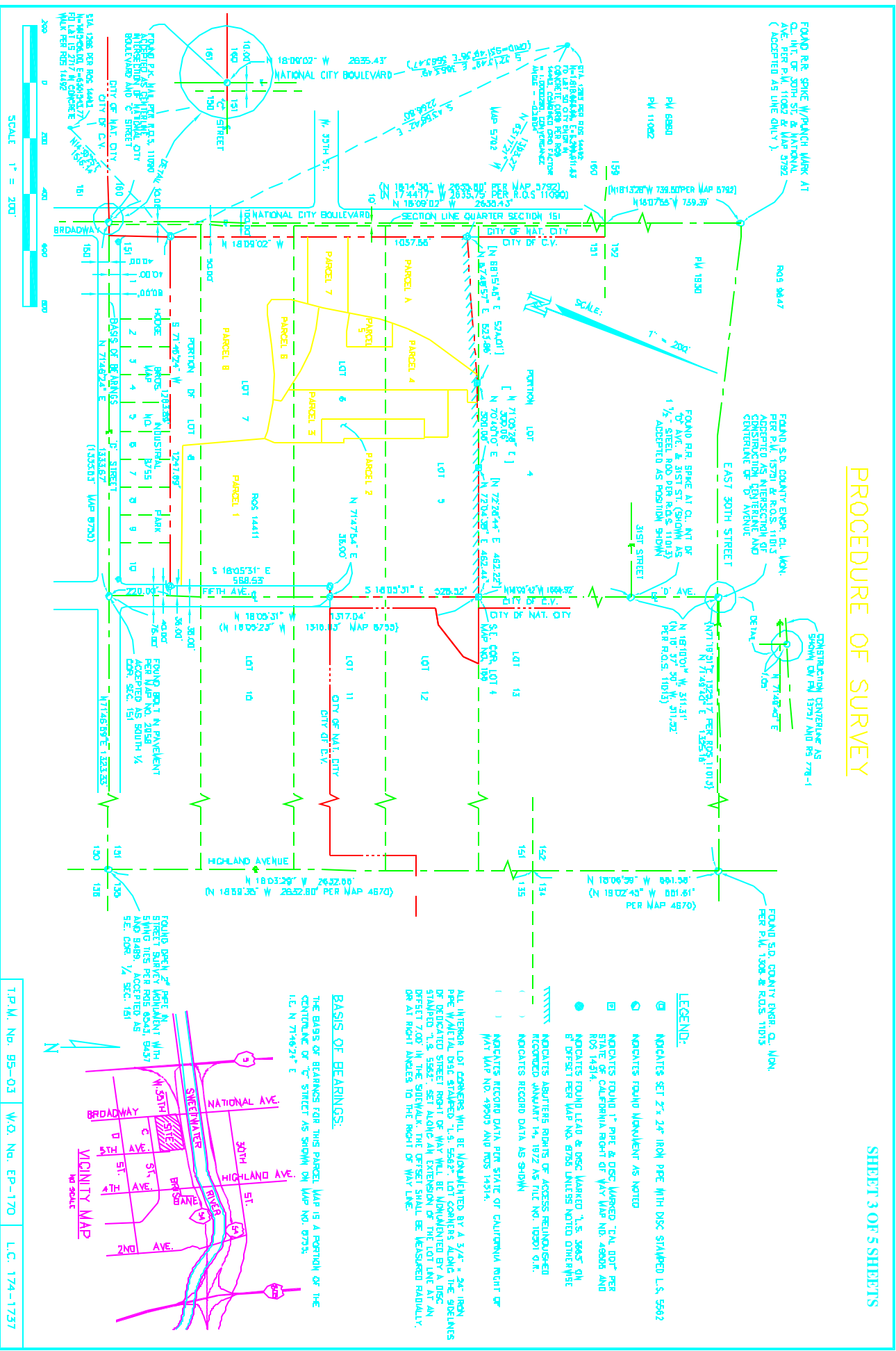


# PARCEL MAP NO.

## PROCEDURE OF SURVEY

SHEET 3 OF 5 SHEETS



FOUND RR. SPK. W/BRANCH MARK AT Q. INT. OF 30TH ST. & NATIONAL AVE. PER P.M. 11092 & MAP 8792 (ACCEPTED AS LINE ONLY.)

FOUND S.D. COUNTY ENGR. CL. MON. PER P.M. 15721 & ROS. 11013 ACCEPTED AS INTERSECTION OF CENTERLINE OF 1/2" WIDE

FOUND RR. SPK. AT Q. INT. OF 1/2" STEEL ROD PER ROS. 11013 ACCEPTED AS POSITION SHOWN

CONSTRUCTION CENTERLINE AS SHOWN ON MAP 15971 AND 89 778-1

FOUND S.D. COUNTY ENGR. CL. MON. PER P.M. 1308 & ROS. 11013

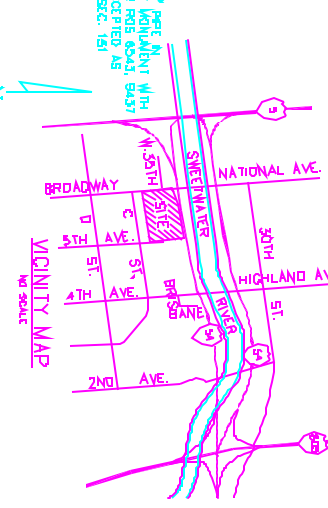
### LEGEND:

- ⊙ INDICATES SET 2" x 2" IRON PIPE WITH DISC STAMPED L.S. 5662
- ⊙ INDICATES FOUND MONUMENT AS NOTED
- ⊙ INDICATES FOUND 1" PIPE & DISC MARKED "CAL. DOT" PER STATE OF CALIFORNIA RIGHT OF WAY MAP NO. 49008 AND ROS 14314.
- INDICATES FOUND LEAD & DISC MARKED "L.S. 2645" ON 8" OFFSET PER MAP NO. 8766. UNLESS NOTED OTHERWISE.
- INDICATES ABUTTERS RIGHTS OF ACCESS REQUISITED RECORDED JANUARY 14, 1922 AS FILE NO. 10201 O.R.
- ( ) INDICATES RECORD DATA AS SHOWN
- ( ) INDICATES RECORD DATA PER STATE OF CALIFORNIA RIGHT OF WAY MAP NO. 49203 AND ROS 14314.

ALL INTERIOR LOT CORNERS WILL BE MONUMENTED BY A 3/4" x 2 1/2" IRON PIPE W/METAL DISC STAMPED "L.S. 5662". LOT CORNERS ALONG THE BOUNDARIES OF DEDICATED STREET RIGHT OF WAY WILL BE MONUMENTED BY A DISC STAMPED "L.S. 5662". SET ALONG AN EXTENSION OF THE LOT LINE AT AN OFFSET 7.00' IN THE SIDEWALK. THE OFFSET SHALL BE MEASURED RADIALLY, OR AT RIGHT ANGLES TO THE RIGHT OF WAY LINE.

### BASIS OF BEARINGS:

THE BASIS OF BEARINGS FOR THIS PARCEL MAP IS A PORTION OF THE CENTERLINE OF "C" STREET AS SHOWN ON MAP NO. 8793. I.C. N 7148214° E



SCALE 1" = 200'

T.P.M. No. 95-03 W.O. No. EP-170 L.C. 174-1737