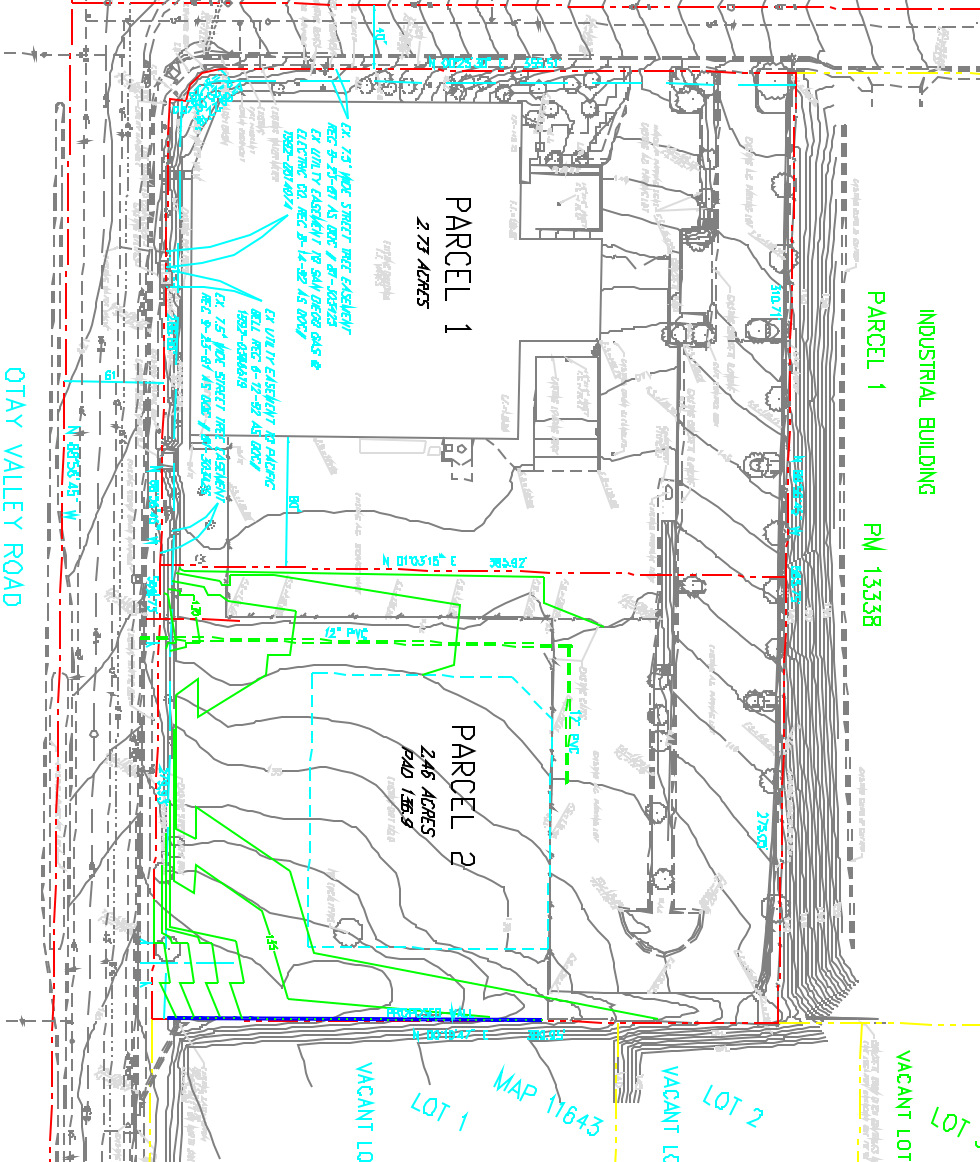
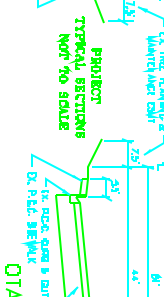
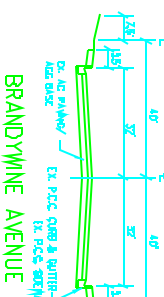
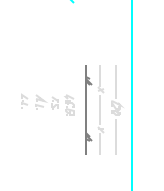


LEGEND

EXISTING CONTIGUOUS
 EXISTING ROADS
 EX. ST. ALLEYWAY
 EX. UTILITY CONDUITS
 EX. UTILITY POLES
 EX. UTILITY TOWER
 EX. UTILITY TRANSFORMER



TENTATIVE PARCEL MAP

OF PARCEL 1 OF PARCEL 1410 ARE 1410A, IN THE CITY OF CHULA VISTA, COUNTY OF SAN DIEGO, STATE OF CALIFORNIA, MAP 11643, IN THE OFFICE OF THE ASSessor'S PARCEL NO. 644-044-28
 OWNER & APPLICANT

ENGINEER OF WORK
 PREPARED BY: DATE

WATER SUPPLY
 CITY WATER DISTRICT
 SEWAGE DISPOSAL
 FIRE PROTECTION
 CITY OF CHULA VISTA
 EXISTING & PROPOSED ZONING
 A.P.

PROPOSED USAGE
 INDUSTRIAL
 GROSS AREA
 419 ACRES
 GRADING
 45 SWATH 3400 ELEV. 2200 TO 2300 C&G HEIGHT

SOURCE OF TOPOGRAPHY
 BENCH MARK
 BEING BUILT IN TOP OF CORNER AT THE CORNER AND SOUTHWEST CORNER OF CATCH BASIN IN THE NORTHWEST CORNER OF OTAY VALLEY AND BRANDYWINE

BOUNDARY NOTE
 DISTANCES AND BEARINGS SHOWN ARE MEASURED AND NOT BE SUBJECT TO CHANGE WITH FUTURE BOUNDARY ADJUSTMENTS

